

Don't Be Satisfied With The "Just As Good" Kind

Demand a Simplex



One of the Farmers' Best Helpers

Remember, that all the time you save in operating "A Simplex" goes to help accomplishing something else, increasing production, and in these days of shortage of farm products that means money for you.

Not only does the "Simplex" do the work in less time than other machines, but it uses less of your energy, skims cleaner and is easier to clean and keep clean,—this latter point makes it a favorite with the women folks.

We know that nothing but the best can stand the test. The Simplex has stood the test. Drop us a card and we'll send you our catalogue.

Let

DOMINION CLEANSER

help you keep everything spick and span. Send a trial order.

D. Derbyshire Co., Ltd.

Head Office and Works: BROCKVILLE, ONT.

Branches: PETERBOROUGH, Ont. MONTREAL and QUEBEC, P. Q. WE WANT AGENTS IN A FEW UNREPRESENTED DISTRICTS

Prince Edward County Holstein Breeders' Fifty Breeders Club Five Hundred Head

The offerings are all young and sound and are backed up by the reputation Prince Edward County Breeders are making for themselves. Every visitor will be cordially treated and driven free of charge among the breeders. For information apply to the Secretary.

CLARENCE MALLORY Secy.-Treas. BLOOMFIELD, Ont.

CANADA'S GREATEST SEED HOUSE

STEELE BRIGGS SEEDS

THE BEST BY EVERY TEST FOR SALE BY RELIABLE MERCHANTS EVERYWHERE THROUGHOUT CANADA

The Feeding of Burkoye Hengerveld

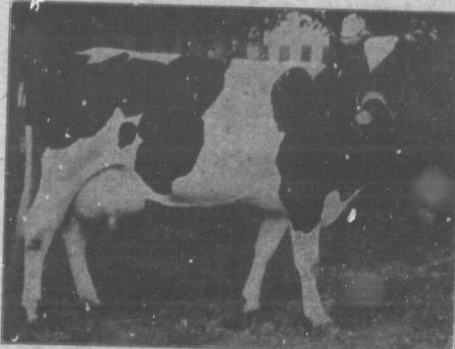
The Details of the Ration of this 20,000 Pound Cow and some Feeding Ideas by her Owner, Mr. Joseph O'Reilly, Ennismore, Ont.

"GRAND and noble brute.—Of all the animal friends of man she is the greatest." These words were spoken by a well known auctioneer before he commenced selling a high record Holstein cow. I often think as I feed and care for these noble animals what a great part they play in the feeding of man.

Truly a 20,000-pound cow doesn't happen, but with breeding, feeding and care we have brought them to the high standard they hold today. I believe in starting with the calf. When the calf is dropped we leave it with the dam about 12 hours, and then start with four pounds of new milk, three times daily (always weighed before feeding), till the calf is four weeks old. Gradually then we increase with separated milk to 18 pounds daily; bran and whole oats (half and half) as soon as they will eat and clover hay. I never give too much at any time, and always keep the pails and mangers sweet and clean. We have no trouble with scours or

rotly she did not freshen just in time to qualify under the present R. O. P. rules, and previous to her test she received no fitting, whatever, freshening in a slim condition. She was fed on a mixture of brewers' grains and molasses, bran, cotton seed meal and linseed meal, one pound of grain mixture to three pounds milk, 75 lbs. mangolds and all the alfalfa hay she could eat in our hour. When on grass she was fed grain and milked three times daily in the stable on dry food with out ensilage, giving 92 lbs. in one day and about 2,400 lbs. in 30 days. She was always fed and milked on time, and I believe if you want to do your cow justice you must be very particular in this respect.

In feeding large record cows you have to study every individual cow as what would suit one wouldn't at all suit the other. At the present time we are testing a cow, and it took no several weeks to discover what grain ration suited her, and before I got her to do her best. Now she is giving:



Burkoye Hengerveld, 9906, the First Four-year-old Cow in Canada to Produce over 20,000 lbs. of Milk.

Her official record for one year is 20,177 lbs. of milk and 782 lbs. of butter. How was she fed? Read the article adjoining. Her owner, Mr. Joseph O'Reilly, Ennismore, Ont., tells all about her rations.

delicate calves, and at a year old have good growthy animals with any amount of constitution. —Then when the time comes later on they are capable of consuming large quantities of feed which is so necessary to produce a 20,000-pound cow, or over, in a year.

We don't believe in breeding the heifers to freshen much before they are two years and three months old, unless they are extra large and strong, when they may freshen a little younger.

In fitting a cow for a large record we feed from 12 to 16 lbs. of a mixture of bran, ground oats and oat meal, depending on the cow and the length of time dry. Ensilage, roots and hay are the forms of roughage used. As she gradually comes to the time of freshening we cut off the grain and ensilage, increase the roots to avoid udder trouble, but air to have them freshen in as high a condition as possible. It's all in both long and short distance performances.

After the cow freshens she gets bran mashes for 24 hours, water with the chill taken off and then we start with the regular ration, increasing one-half pound a day until capacity is reached. Burkoye Hengerveld, our greatest cow, was the first four-year-old to make a record of 20,177 lbs. milk and 782 lbs. butter in Canada. Unfortun-

—us about 100 lbs. of milk daily in four milkings; her best day's milk being 104.5 lbs. In a cow giving upwards of 100 lbs. or over you are working with a very delicate machine, and any change, if absolutely necessary, must be made very gradually.

Items of Interest

G. W. Mann, Peterboro Co., Ont., is a Shorthorn man. Under an illustration of his barn, which appeared in a recent issue of Farm and Dairy, he was mentioned as a breeder of Holsteins, being confused with some of his relatives in the vicinity. As Mr. Mann has no desire to be classified among the fanciers of black and whites, we are glad to make this correction.

Where may good seed be obtained for 1915? The Canadian Seed Growers' Association have just issued a catalogue of registered and improved seed produced in 1914 and offered for sale. The Canadian Seed Growers' Association does not handle seed directly, but supplies a list of its members who have seed for sale. Copies of their catalogue may be had on application to L. H. Newman, Secretary-Treasurer, Canadian Building, Ottawa.



Trade in Vol. XX Beans

THE be family of that fami plants. The den bean, p and animals a century ago village of M New York ste the first be grown was 1 25 or 30 ye Pea Bean. dard variety price, the be grown, such Marrow Fat. Bean grow countries of are other se now success suited to this States, lie w drift of the rule, are r and organic that a crop w the air, show supply of pho

Beans have loamy soil, a deau Harbor out of beans. found that the clay soil, prod heaves land be fall plow loamy nature. Sod land with yard manure beans. The crop may, ho ease, and if practised.

Bean grain be kept in a May in order and to retain spring, the plowing, then good condition for seed show disease. The three pecks to may take place. The ground is they are plan letting only t drill, making