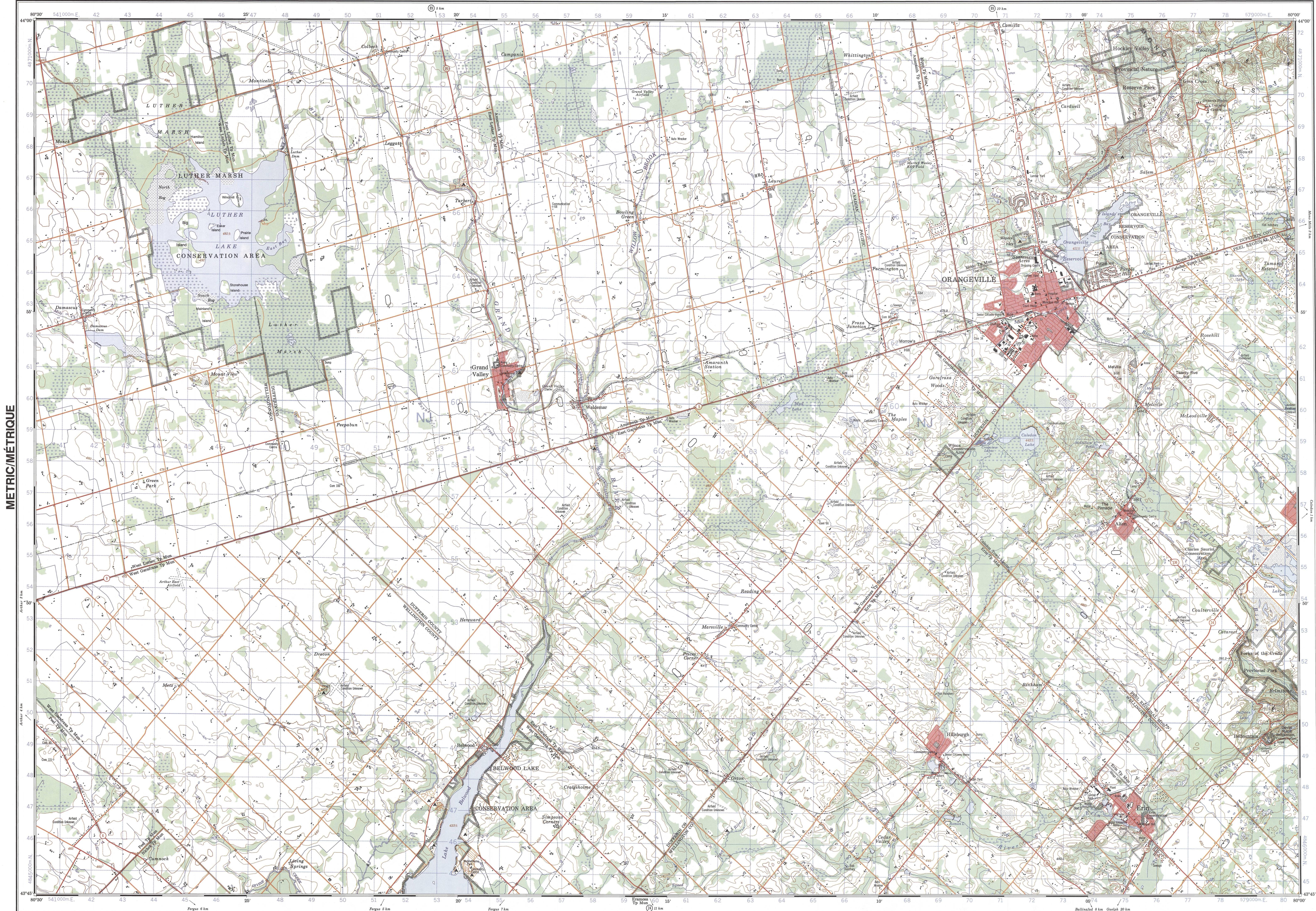


METRIC/MÉTRIQUE

METRIC/MÉTRIQUE



Military users, refer to this map as: Références de cette carte pour usage militaire

Approximate values for center of map: Approx. change necessary 4.2'

Approximate values for center of map: Approx. change necessary 4.2'

Approximate values for center of map: Approx. change necessary 4.2'

Approximate values for center of map: Approx. change necessary 4.2'

Approximate values for center of map: Approx. change necessary 4.2'

Approximate values for center of map: Approx. change necessary 4.2'

Approximate values for center of map: Approx. change necessary 4.2'

Approximate values for center of map: Approx. change necessary 4.2'

Approximate values for center of map: Approx. change necessary 4.2'

Approximate values for center of map: Approx. change necessary 4.2'

Approximate values for center of map: Approx. change necessary 4.2'

Approximate values for center of map: Approx. change necessary 4.2'

Approximate values for center of map: Approx. change necessary 4.2'

Approximate values for center of map: Approx. change necessary 4.2'

Approximate values for center of map: Approx. change necessary 4.2'

Approximate values for center of map: Approx. change necessary 4.2'

Approximate values for center of map: Approx. change necessary 4.2'

Approximate values for center of map: Approx. change necessary 4.2'

Approximate values for center of map: Approx. change necessary 4.2'

Approximate values for center of map: Approx. change necessary 4.2'

Approximate values for center of map: Approx. change necessary 4.2'

Approximate values for center of map: Approx. change necessary 4.2'

Approximate values for center of map: Approx. change necessary 4.2'

Approximate values for center of map: Approx. change necessary 4.2'

Approximate values for center of map: Approx. change necessary 4.2'

Approximate values for center of map: Approx. change necessary 4.2'

Approximate values for center of map: Approx. change necessary 4.2'

Approximate values for center of map: Approx. change necessary 4.2'

Approximate values for center of map: Approx. change necessary 4.2'

Approximate values for center of map: Approx. change necessary 4.2'

Approximate values for center of map: Approx. change necessary 4.2'

Approximate values for center of map: Approx. change necessary 4.2'

Approximate values for center of map: Approx. change necessary 4.2'

Approximate values for center of map: Approx. change necessary 4.2'

Approximate values for center of map: Approx. change necessary 4.2'

Approximate values for center of map: Approx. change necessary 4.2'

Approximate values for center of map: Approx. change necessary 4.2'

Approximate values for center of map: Approx. change necessary 4.2'

Approximate values for center of map: Approx. change necessary 4.2'

Approximate values for center of map: Approx. change necessary 4.2'

Approximate values for center of map: Approx. change necessary 4.2'

Approximate values for center of map: Approx. change necessary 4.2'

Approximate values for center of map: Approx. change necessary 4.2'

Produced by the Canada Centre for Mapping, Department of Energy, Mines and Resources. Information current as of 1984. Published in 1984. Copies may be obtained from the Canada Map Office, Department of Energy, Mines and Resources, Ottawa, or your nearest map dealer.

© 1984, Her Majesty the Queen in Right of Canada, Department of Energy, Mines and Resources.

Produit par le Centre canadien de cartographie, Ministère de l'énergie, des mines et des ressources. L'information est à jour en 1984. Publié en 1984. Ces cartes sont en vente au bureau des cartes du Canada, Ministère de l'énergie, des mines et des ressources, Ottawa, ou chez le vendeur le plus près.

© 1984, Sa Majesté la Reine du chef du Canada, Ministère de l'énergie, des mines et des ressources.

ORANGEVILLE ONTARIO

Scale 1:50 000 Échelle

CONVERSION SCALE FOR ELEVATIONS

ÉCHELLE DE CONVERSION DES ALTITUDES

CONTOUR INTERVAL 10 METRES

ÉLOIGNEMENT DES COURBES 10 MÈTRES

Scale 1:50 000 Échelle

CONTOUR INTERVAL 10 METRES

ÉLOIGNEMENT DES COURBES 10 MÈTRES

Scale 1:50 000 Échelle

CONTOUR INTERVAL 10 METRES

ÉLOIGNEMENT DES COURBES 10 MÈTRES