

Protect Your Furs
By Putting Them in
EATON'S Cold Storage
Full particulars, Fur Office, Third Floor.
Phone Adelaide 5000, and ask for the
Women's Fur Department.

EATON'S DAILY STORE NEWS

"The Same Old, Dear Old Place"
One of the brightest and most ap-
pealing of the new songs, described
as a "ballad of home." In keys to
suit all voices—priced 40 cents.

1869

GOLDEN JUBILEE

Store Closes Saturdays at 1 p.m., Other Days 5 p.m.
"Shorter Hours" "Better Service"

1919

If You've Tarried

In the Buying of Your Spring Top Coat

Then Today's the Day to Buy,

For

\$30.00, \$32.50 and \$35.00 Coats

Are Offered

For \$25.00

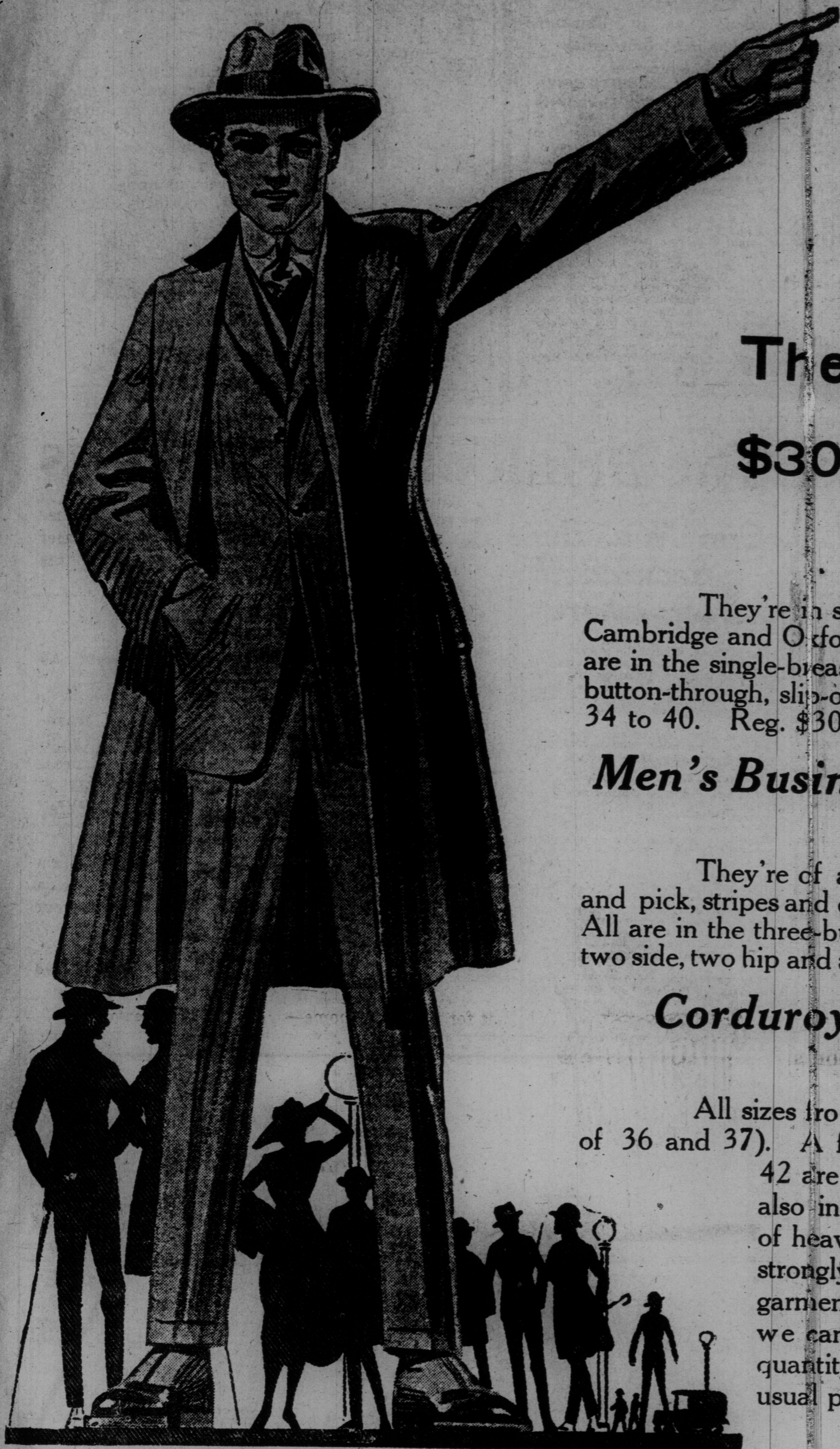
They're in slip-ons and waisted styles, are of all wool or union tweeds and cheviots in brown, Cambridge and Oxford greys. In herringbone, fancy mixtures and plain Cambridge greys. Mostly all are in the single-breasted form-fitting waisted style, with slash pockets. A few are in the full-fitting, button-through, slip-on styles with patch pockets. A few are lined through with twill material. Sizes 34 to 40. Reg. \$30.00, \$32.50 and \$35.00. Today \$25.00.

Men's Business Suits, Reg. \$22.50, \$25.00 and \$27.50, Today, \$17.25

They're of all wool and union tweeds, or cotton and wool worsted finished fabrics, in pick and pick, stripes and checked patterns, in medium and dark greys. A few brown tweeds are in the lot. All are in the three-button single-breasted semi-form-fitting sacque style. Trousers have belt loops, two side, two hip and a watch pocket. Sizes 36 to 44. Reg. \$22.50, \$25.00 and \$27.50. Today \$17.25.

Corduroy Pants and Coats, Less Than Half the Usual Price, \$1.95

All sizes from 32 to 42 (with the exception of 36 and 37). A few breeches in sizes 38, 40 and 42 are in the lot. A few odd coats are also included in sizes 35 to 42. All are of heavy ribbed dark brown corduroy with strongly sewn seams and pockets (only one garment to a customer), and for this item we cannot take phone or mail orders, quantity being limited. Less than half the usual price. Today \$1.95.



Men's Plated Cashmere and Cashmerette Half Hose

In black, and a few tan and grey. Made from cotton and wool mixture and all cotton yarns. In the lot are sizes 10 to 11, but not in each color. We cannot take phone or mail orders, quantity being limited. Reg. 45c and 65c pair. Per pair, today, 29c.

Men's Boots

In mahogany lace, Goodyear welted soles, recede shapes, Neolin soles and rubber heels. Also with leather soles. Reg. \$4.25 to \$6.50 a pair. Today, \$4.00.

Men's Hats

Men's Fur Felt Soft Hats, in fedora, crease crown style; with medium or wide brims, in shades of green and grey. Sizes in the lot 6 1/2 to 7 3/4. Each, today, \$1.65.

Men's Combinations, Work Shirts, Belts and Shirts---They, Too, Are Offered At Bargain Prices

Summer Combinations of combed cotton yarns, in flat or spring needle stitch. Quarter sleeves, French neck, closed crotch and short legs. Sizes 34 to 44. Are priced today at, the suit, \$1.48.

Men's Heavy Khaki Drill Work Shirts, with lay-down collar, yoke, two pockets with flaps to button; gussets and double sewn seams. For this item we cannot take phone or mail orders, the quantity being limited. Sizes 15 to 17 1/2. Reg. \$2.50, for, each, \$1.98.

Men's Belts, in khaki, tan or grey, made with leather tops and Keratol backs; have single or double keeper, gilt or gunmetal buckle. Smooth or pebbled grain finish. Sizes 30 to 42 in the lot, but not all sizes in each color. Today, each, 33c.

Boys' Shirt Waists, of printed cotton. In neat patterns and in blue, black or helio, on white grounds. Have attached collars, single button cuffs, breast pocket. Sizes 11 to 13 1/2. Reg. 75c, 89c and \$1.00. Today, 69c.

Men's Shirts, in cotton crepe and printed percales, in coat style, and with double cuffs and laundered neckbands. Various sleeve lengths, in large selection of fancy striped patterns, single, double or cluster stripes. Color combinations of blue, black and mauve, tan or green, on light color grounds. Sizes 14 to 17. Today, each, \$1.29.

THE T. EATON CO. LIMITED