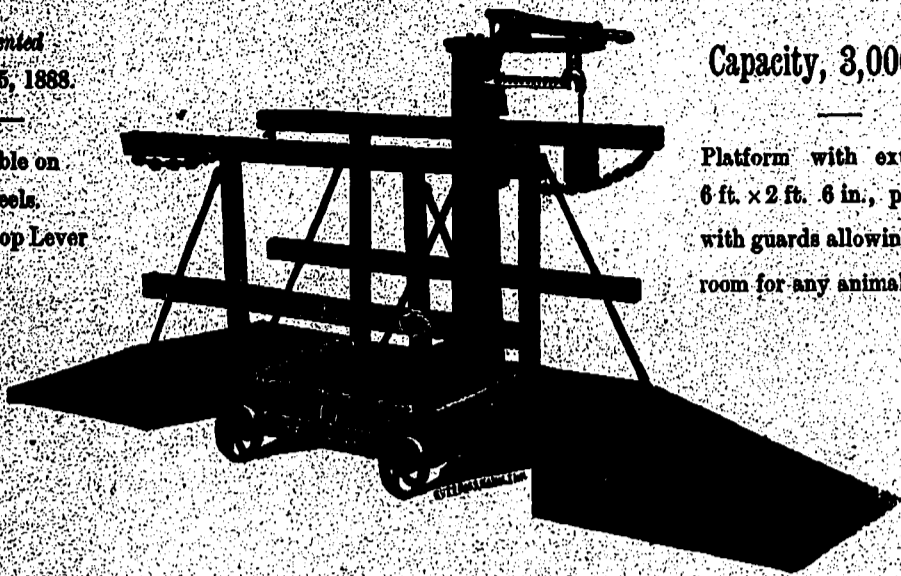


GURNEYS' FARM & STOCK SCALE.

Patented
April 25, 1888.

Portable on
Wheels.
With Drop Lever



Capacity, 3,000 lbs.

Platform with extensions
6 ft. x 2 ft. 6 in., provided
with guards allowing ample
room for any animal.

Designed especially to meet the wants of Farmers and Stock Raisers.

Made very strong, of the best material and finish. So constructed that Extensions and Guards can be uncoupled when desired, and Scale used without them.

PRICE MODERATE.
See this Scale at your nearest Hardware Merchant, or write direct to Makers.

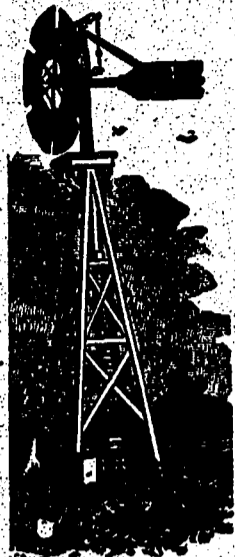
MANUFACTURED ONLY BY

GURNEYS' & WARE SCALE CO., HAMILTON, ONT.

HALLADAY STANDARD WINDMILLS

For supplying constantly pure and fresh water for the following purposes, viz. :—

- | | |
|----------------------------|-------------------------------|
| Pumping Water for Stock, | Hotels, Colleges, |
| Farm Buildings, | Pumping for Railway Stations, |
| Mansions, | Fire Protection, |
| Villa Residences, | Irrigation, |
| Public Institutions, | Tanneries, |
| Gardens, | Breweries, |
| Green Houses, | Sewage, Mines, |
| Town & Village Waterworks. | Draining Low Lands. |



These celebrated Windmills are made from one man to forty horse-power. They are perfectly controllable in gales and uniform in speed.

Geared Mills for chaff cutting, root pulping, threshing, sawing wood, grinding corn, etc., etc.

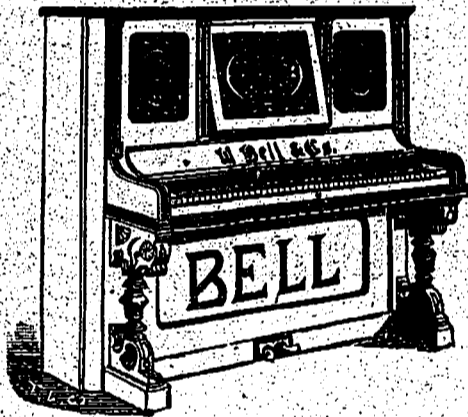
Also Manufacturers of FEED GRINDERS, HAYING TOOLS, IRON and WOOD PUMPS, and a full line of Railway, Town, Farm, and Ornamental Water Supply Materials.

Catalogue and Price Lists, with references, mailed free on application to

ONTARIO PUMP CO.,
TORONTO, ONT., CANADA.

"BELL" PIANOS,

With Improved Plate and Scale, are in Tone and Durability superior to all other makes.



"BELL" ORGANS,

Pure and Sweet in Tone, and made of best material, are known throughout the world as strictly first-class.

Every Instrument Guaranteed. High Class Goods a Specialty.

SEND FOR CATALOGUE.

W. BELL & CO. OFFICE AND FACTORIES, GUELPH, ONT.

Warerooms at TORONTO, HAMILTON, ST. THOMAS, & WINNIPEG.

METALLIC SHINGLES.

The following buildings have lately been covered with the Eastlake Metallic Shingles, viz. :

- Agricultural College Buildings for Ontario Government at Guelph.
- Academy of Music, Victoria Rink, and Industrial Exhibition Buildings, Toronto.
- Grand Trunk Elevator, Midland.
- And on over forty elevators in Manitoba and the North-West.

Our Shingles and Siding are Fire Proof, Storm Proof, and Durable. Can be put on by any one.

Send for price list and circulars.

Metallic Roofing Co. Ltd.

82 YONGE ST., TORONTO, ONT.

J. L. Dunn & Co.,

MANUFACTURERS OF ALL KINDS OF

VARNISHES,

JAPANS, HARD OIL FINISHES,
LIQUID DRYERS, &c., &c.



WINDSOR, - - - ONT.

Correspondence Solicited.

Mention this Paper.

THE BRANTFORD FANNING MILL WITH BAGGER.

WILL CLEAN AND PUT IN BAGS
120 BUSHELS AN HOUR



Saves Time, Saves Grain, Saves Labor.

E. L. GOOLD & CO., Manufacturers,
BRANTFORD, CANADA.

Sold in all parts of the Dominion.

(Mention this paper.)