

STYLES FOR
MISSSES, GIRLS, LITTLE FOLKS, ETC.

FIGURE No. 212 W.—GIRLS' DANCING-SCHOOL DRESS.

FIGURE No. 212 W.—This illustrates a Girls' dress. The pattern, which is No. 9064 and costs 25 cents, is in 8 sizes for girls from 5 to 12 years of age, and is shown differently made up on page 239.

Cream India silk figured in light green was here used for this charming little dress, and a decoration of dark-green velvet ribbon and white lace edging is attractively arranged. The graceful five-gored skirt is gath-



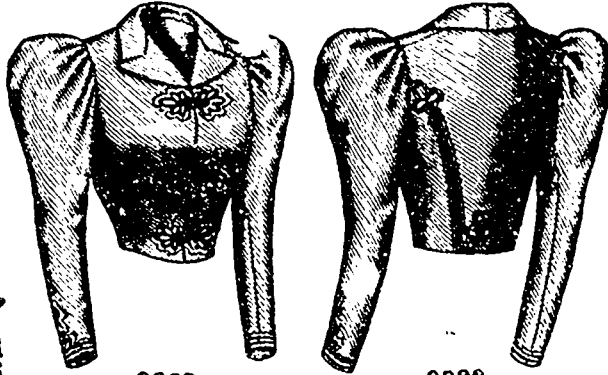
FIGURE No. 212 W.—This illustrates GIRLS DANCING-SCHOOL DRESS.—The pattern is No. 9064, price 25 cents.

ered at the top and joined to the fancy round waist, which has a full front showing four crosswise tucks a little below the neck and puffing out prettily below the tucks. Two backward-turning plaits are laid at each side of the closing at the back, the plaits extending to the shoulders. Full sections that taper to points where they meet at the center of the front and back, rise from round the neck, above a frill of lace; and a wrinkled girdle, which has frill-finished ends closed at the back, is of belt depth in front and deepened in bodice effect toward the ends, which are closed at the back. The sleeve is arranged in a large and a small puff.

All soft woollens and silks and the numerous varieties of thin fabrics will make up effectively in this way, and lace edging and insertion and ribbon will afford appropriate trimming

MISSSES' SINGLE-BREASTED ETON JACKET WHICH MAY EXTEND TO THE WAIST OR NEARLY TO THE WAIST.

No. 9063.—Gray broadcloth was selected for this trim-looking Eton jacket, braid applied in military fashion and frogs providing the trimming. The jacket is fitted by shoulder seams and side-back gores and is closed at the center



9063
Front View.

9063
Back View.

MISSSES' SINGLE-BREASTED ETON JACKET, WHICH MAY EXTEND TO THE WAIST OR NEARLY TO THE WAIST.

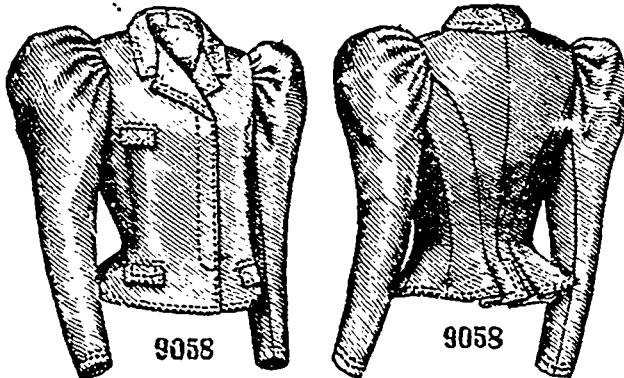
of the front with hooks and eyes and frogs below small pointed lapels that form narrow notches with the ends of the rolling collar. The jacket may extend quite to the waist or nearly to the waist, as preferred. The two-seam sleeves are moderate in size, they are gathered at the top, where they puff out stylishly.

Cloth, velvet, cheviot serge, etc., will be suitable for this jacket and braid, gimp and passementerie may be used for garniture.

Pattern No. 9063 is in 5 sizes for misses from 12 to 16 years of age. For a miss of 12 years, the jacket requires 3 yards of material 22 inches wide. Price of pattern, 20 cents.

MISSSES' JACKET, WITH FLY FRONT. (KNOWN AS THE COVERT COAT.)

No. 9058.—This jacket is pictured made of tan broadcloth with a tailor finish of machine-stitching. The jacket is gracefully adjusted by a center seam and side-back and under-arm gores; and



9058
Front View.

9058
Back View.

MISSSES' JACKET, WITH FLY FRONT. (KNOWN AS THE COVERT COAT.)

coat-laps appear below the center seam, coat-plaits at the side-back seams, and slight ripples in front of the plaits. The loose fronts lap widely

and close with buttons and button-holes in a fly, above which they are reversed in lapels that form short, wide notches with the rolling coat-collar. Square-cornered pocket-laps conceal openings to inserted side pockets and a small breast pocket in the right front. The two-seam sleeves are gathered at the top and stand out in a stylish way.

Blue, gray, brown and biscuit broadcloth, covert cloth and cheviot in plain or mixed effects will be suitable materials for this jacket and an inlay of velvet may be used on the collar with good effect.

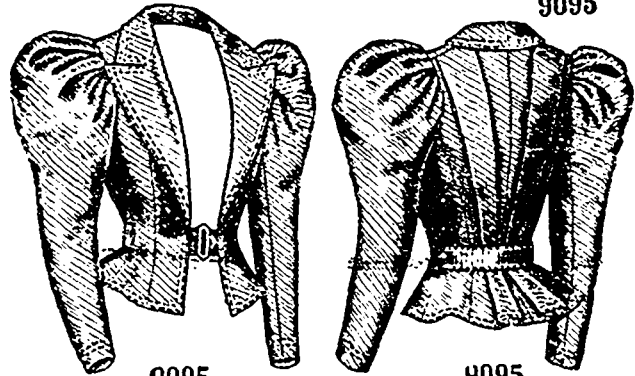
Pattern No. 9058 is in 7 sizes for misses from 10 to 16 years of age. For a miss of 12 years, the jacket requires 3 yards of material 27 inches wide. Price of pattern, 25 cents.

MISSSES' JACKET. (TO BE WORN OPEN AND ROLLED TO THE WAIST OR CLOSED AT THE BUST.) FOR CYCLING AND OTHER OUTDOOR WEAR.

No. 9095.—This natty jacket is here pictured made of serge and finished in tailor style with machine-stitching. The adjustment is accomplished by single bust darts, under-arm gores, side-back gores extending to the shoulders and a center seam. A box-plait that is narrowest at the waist is applied over each side-back seam, the side edges of the plaits being joined separately to the backs and side-backs below the waist to give fullness in the skirt. A belt crosses the back and is drawn under



9095



9095
Front View.

9095
Back View.

MISSSES' JACKET. (TO BE WORN OPEN AND ROLLED TO THE WAIST OR CLOSED AT THE BUST.) FOR CYCLING AND OTHER OUTDOOR WEAR.

the fronts through openings in the under-arm seams and closed with a buckle. The fronts may be rolled to the waist or they may be closed on the bust with a button and button-hole and turned back in small lapels above, as illustrated. The rolling collar is made with a center seam. The two-seam sleeves are gathered at the top and below they fit smoothly.

The jacket is a jaunty and practical style and will be made of smooth cloth, cheviot and cycling cloths, as well as of linen and duck to match special suits. Stitching is the most suitable finish. A jacket designed to form part of an outing costume was made of navy-blue serge. A leather belt may be used in lieu of the one provided by the pattern.

Pattern No. 9095 is in 5 sizes for misses from 12 to 16 years of age. For a miss of 12 years, the jacket calls for 4 yards of goods 27 inches wide. Price of pattern, 25 cents.