

that of the last. The Methodist congregation have built a very good church this past summer.

At Holmfeld there are two general stores owned by A. Hicks and F. J. Messner, also a branch hardware store. Harrison Bros. own the elevator and flour mill at this point.

The town of Killarney is located within a very short distance of Killarney lake, which is a very pretty sheet of water. This lake affords good boating and bathing during the summer months to the residents of Killarney as well as to a large number of campers who spend their holidays here. Killarney is also an important business point having five general stores, two hardware stores, two lumber yards, a flour mill, etc. Cross & McQueen, general merchants, built a fine brick block recently and have just moved into it. L. J. Lawlor has also a brick store under construction. R. Rollins has bought the general store business of A. E. Fremlin and J. P. Shannon has taken

Whitewater has but one store, that of F. D. Peters, and three elevators. This station is on the edge of Whitewater Lake, which is widely known among sportsmen as being one of the best points in this country for geese.

At Deloraine there have been several very good buildings erected this year. Jas. Flynn has built a large brick veneer block, the ground floor of which is divided into stores and offices and will be occupied by J. Young, clothier, the municipal office, post office, customs office, C. E. Stevens, butcher shop and a shoemaker's shop, the upstairs being for lodge rooms and a public hall. Laird & McGarvey are building a large hotel on the site of the one burned some months ago and expect to open it about the 15th of this month. The Union bank is building a solid brick block which will be ready for occupation shortly. Cowan, the druggist, has added another story to his building, making it two stories. The new portion is to be divided into offices. C. E. Gutter-

a large increase in business over that of the last few years.

As in other parts of the province, business was very dull during the regular grain and shipping month. The time of year when it should be at its best. However, the grain is in the country and it only awaits the advent of good sleighing or a rise in the markets to bring it out.

### Winnipeg Prices a Year Ago.

Following were Winnipeg prices this week last year:

Wheat—No. 1 hard wheat quoted at 68 to 68 1-2c January delivery.

Flour—Local price per sack: Patent, \$1.95; best bakers', \$1.75.

Oatmeal—\$1.90 per 80 pound sack.

Millstuffs—Bran, \$10 per ton; shorts \$12 delivered to city dealers.

Oats—Carlots on track, 24 to 26c.

Flaxseed—Per bushel at country points, 65c.

Barley—Farmers' loads, 23 to 25c per bushel for feed grades. Malting barley in car lots on track, 30c per bushel.

Corn—In carlots, 41 to 43c per bushel of 50 lbs.

Butter—Dairy, jobbers paying 13 1-2 to 16c; fresh creamery, 22 to 23c to buyers.

Cheese—9 1-2 to 10c per pound at factories.

Eggs—Dealers asking 20c per dozen for Ontario or Manitoba held fresh eggs. Lined, 16 to 17c.

Hides—No. 1 green hides, 6 1-2c; frozen stock, 6c per lb.

Wool—8 to 8 1-2c for unwashed fleeces. Seneca—21c per lb.

Hay—Baled, \$7.50 to \$8 per ton on cars. Loose hay worth \$6 to \$7.50 per ton.

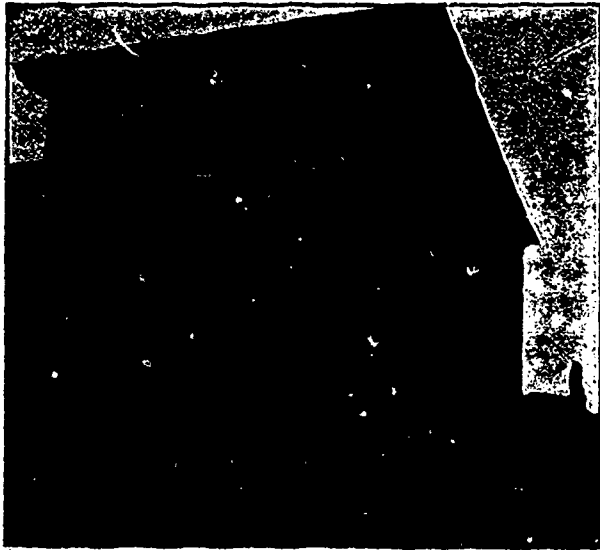
Potatoes—35 to 40c per bushel on the street.

Dressed Poultry—Turkeys, 10 to 12c per lb.; chickens, 8 to 9c; ducks, 8 to 10c; geese, 10c.

Gaine—Rabbits, 8 1-2c each; pigeons, 20c per pair.

Dressed meats—Fresh killed beef, city dressed, 5 1-2 to 6c; country frozen beef, 4 to 5c; mutton, 7 to 8c; lamb, 8 to 9c; hogs, 5 1-2 to 6c; veal, 6 to 7c.

Live Stock—Cattle, 3 to 3 1-2c for butchers' stock; hogs, off cars 4 1-2c per lb.; sheep, 3 1-2c off cars.



General Store of Montgomery & Colquhoun, Deloraine, Man.

over the hardware business of J. H. Elms. There have been to date about 175,000 bushels of grain marketed here this season.

Ninga has three general stores owned by Miller & Haines, D. C. McArthur and H. George, a hardware by W. P. Landon, a lumber yard, drug store, harness shop, two butcher shops, bakery, etc. W. P. Landon and Miller & Haines built new stores in 1893.

Bolsserain has a population of about 1,200. There were but few business changes here during the past year, but it is not to be expected that there would be many new businesses started when we consider that there are now eight general stores, two hardware stores, three drug stores, a grocery, three or four bakery and confectionery stores, two harness shops, etc. Jno. White has started a general store here and McAllister & McCausland have purchased the grocery business of J. P. Graves, who has moved to Elgin. Davis & Wilson bought out the hardware stock of J. M. Birbeck. There is a branch of the Union bank here and a large flour mill owned by J. S. McKay. There are a large number of very fine stone residences and business blocks in this town.

idge has bought out P. McConnell's stock of groceries, etc. J. Young has taken over Horne & Traynor's clothing business and Snider & Barber have leased the flour mill and have it now in good working order. There are a number of very fine buildings here, among them being the Methodist and Presbyterian churches, the former being a brick and the latter a stone structure, also a stone schoolhouse, as well as a number of good brick buildings. We show a cut of Montgomery & Colquhoun's general store building which is of stone and is a very handsome and substantial looking structure. Between Deloraine and Napinka, a distance of about 19 miles, there are as yet no towns or business places, so that we have with this town practically reached the end of this line, as Napinka was mentioned in a previous letter.

The season of 1899 was one of great activity in the building line throughout this country, particularly so among the farmers, large numbers of whom are now in such circumstances that they are able to build larger and more comfortable dwellings and out-buildings. A great deal of building has also been done in the different towns and the lumber dealers report

### Souris Coal in Demand.

There has been a very heavy demand for the native Souris coal this winter, notwithstanding the mild weather. While the demand for other coals and also for wood fuel has been much less than it would otherwise have been, with average winter weather, there has been no curtailment of the demand for Souris coal. On the contrary the mines have been away behind with their orders all the season. This is, no doubt, partly owing to the fact that while other coals are held much higher than usual this winter, Souris coal has been selling at the same price as last winter. The absence of snow has also prevented many farmers from getting out supplies of wood fuel, thus increasing the demand at country towns for coal.

Some men are too proud to be seen carrying anything but a walking stick or a lag.

**WANTED—SEVERAL PERSONS FOR** District Office Managers in this state to represent me in their own and surrounding counties. Willing to pay yearly \$600, payable weekly. Desirable employment with unusual opportunities. References exchanged. Enclose self-addressed stamped envelope. S. A. Park, 320 Caxton Building, Chicago.