

Belmont & Methuen Financial Statement for 1921.

RECEIPTS	
Balance on hand	\$ 1547 56
Roll 1920	1223 69
County Treasurer	616 96
Roll 1920	3158 28
Prov Govt timber dues	8 09
Foley Estate	50 00
R W Burgess lumber 11-2, c 12	50 00
McConnell re pool license	15 00
G Clemenger	15 00
Foley Estate	37 50
Railway tax	20 48

New Advertisements.
 Advertisements under this heading: Found Lost, For Sale, or To Rent, Estrays, Wanted etc., one cent per word for each insertion; four insertions for the price of three; less than 25 words to count as 25. Cash with order.

Lost.
 Between Squire's store house and Squire's store on Dec. 24th, a large purse containing a smaller purse, a two dollar and two one-dollar bills, and some silver. Finder please leave at this office or at
FRED SQUIRE'S STORE,
 J-5. Havelock.

Auto Crank Found.
 A Chevrolet crank, picked up on the street in Havelock on Dec. 19th, awaits an owner at
STANDARD OFFICE

Board of Health Notice.
 Citizens of Havelock are hereby notified that all drinking water should be thoroughly boiled before using, as many wells in the village have been found to be contaminated with typhoid bacilli. By Order of the Board of Health,
J. HOLDCROFT,
 N-24. Medical Officer of Health.

Church Notices
METHODIST CHURCH
 Minister—Rev. E. O. Seymour.
 10 A. M.—Morning Class.
 8 P. M.—Sabbath School.
 Morning worship at 11 A. M.
 Evening at 7 P. M.
 Come and enjoy 'he Christmas music and address. Bring your friends.

KNOX CHURCH
 Rev. Jas. Skene, Preacher.
 Sunday School, 10 a. m.
 Morning Service 11 a. m.
 Evening Service 7 p. m.
 You are cordially invited to attend these services.

Legal Cards.
C. A. GHENT
 BARRISTER NOTARY PUBLIC
 Solicitor for the Bank of Toronto
 Office at Residence, Union St., Phone 41
HAVELOCK.
 Monies of clients to loan on mortgages, etc., at lowest rates

O. A. LANGLEY
 BARRISTER AND SOLICITOR
 Peterborough Office—Court House
 (Phone 312)
 Lakefield, Queen St., (Phone 56.)

Peck, Kerr & McElderry
 BARRISTERS AND SOLICITORS
 Office 415 Water St., Peterborough
 E. A. Peck, F. D. Kerr, V. J. McElderry

Gordon & O'Brien
 BARRISTERS, SOLICITORS, NOTARIES
 Offices Corner of George and Hunter St.
 opposite Bank of Toronto, Peterborough
 Money to Loan at lowest interest rates
 Solicitors for City of Peterborough, and
 Commissioners for New York State.
G. N. Gordon J. A. O'Brien

Medical Cards.
Dr. Buchanan
 Peterborough
 F. R. C. S., Edinburgh; M. R. C. S.,
 England; L. R. C. P., London.
EYE, EAR, NOSE AND THROAT SPECIALIST
 Corner of Water and Murray Sts.

Havelock L. O. L. 326
 MEETS IN ORANGE HALL,
 HAVELOCK, 2ND WEDNESDAY
 EVERY MONTH AT 7.30 SHARP.
 Robt. Anderson, W. M. Visiting
 Wm. Copp, Rec. & Fin. Brethren
 Secretary. Welcome.

BOARD OF EDUCATION
 The High School Department of the Havelock School is now fully equipped for doing High School work. Fall courses taught for Junior, Senior Normal and Matriculation Examinations. The staff is experienced and competent. No fees. Absolutely FREE tuition.
J. DAVIDSON, M. A., LL. B., Prin.
 Isaac Barlow, Esq., H. W. Roche,
 Chairman. Secretary.

County Rate	
Ed M. Elliott County Rate	\$3900 00

Board of Health	
A. C. Deniko tamagat supp	\$ 4 20
E. Fennel M. H. officer sal etc	91 84
Dr. Thompson san sch schools	145 00
Dr. Thompson fun No 2 school	28 00
placard and furn Cassan's house	8 00
Dr. Thompson's meetings B. H.	24 00
Reeve, Clerk, E. Spencer and F. att local B of H	24 00

Salaries and Allowances	
W. J. Russell auditor	\$ 12 00
W. R. Burgess	12 00
J. Doupe assessor, postage, etc	190 00
J. Doupe sel jurors	3 00
Mrs. Seabrook S. Att. O. & postage	49 00
F. Steenburgh sess allowance	60 00
N. Whitney	60 00
M. Rylott	60 00
J. B. Breckenridge	60 00
W. E. Griffith	60 00
R. McCutcheon part sal	75 00
Grant Dafeo sal as clerk	160 00
Grant Dafeo and Reeve sel jurors	7 00
Reeve, Clerk and Treas fu stat's	6 00
W. Burgess sal as treasurer	120 00

Municipal Govt. and Election	
H. W. Brown D. R. O. and booth	\$ 7 00
W. R. Burgess	7 00
W. R. Purdy	7 00
W. J. Peoples	6 00
W. Dulmage	11 00
F. Post	8 00
D. Menzies	7 00
Grant Dafeo	6 00
D. Petherick	7 00

Schools	
C. McConnell S S 1 on 1921 rate	\$ 75 00
H. W. Brown S S 3	150 00
J. H. Johnston S S 6	200 00
D. Petherick No 4	502 31
H. W. Brown No 3	600 16
J. M. Anderson No 7	255 90
Jas. H. Johnston No 6	352 40
Geo. A. Vansickle No 10	325 47
W. J. Peoples No 2	604 95
J. W. Russell No 9	436 50
Chas. McConnell No 1	201 98

Printing, Postage, Stationery	
Havelock Standard ptg.	\$ 52 60
Municipal World stationery	87
dog tags & stat's	14 04
finan statement	11 94
stat and supplies	1 89
Havelock Standard ptg.	18 00
Municipal World supplies	5 27
pay sheets	5 05
voters lists	60 00
tax bills	9 90
Grant Dafeo postage and stat.	14 60
W. Burgess postage & war stamps	9 00

Miscellaneous	
E. Stevens reb err trustee rate	\$ 7 50
G. Dafeo Reg D M and Births	16 30
Mrs. Ellis supp Foley Estate	25 00
Municipal World 7 subs	7 00
Bk Toronto rent saf dep box	5 00
Mrs. Ellis grant Foley estate	5 00
B. McNeely Bel por sur W bound	12 00
Mrs. J. Seabrook clean T. Hall	3 00
J. Seabrook tie posts T. Hall	5 00
J. Vanvolkenburg reb dog ass err	4 00
Ritchie & Son lace leather	1 00
A. J. Peeling machine oil	4 90
W. Stevenson rep crusher	4 54
G. Clemenger s labor pd in error	3 00
reb pool license	5 00
F. C. McRea grant rural S Fair	20 00
A. J. Peeling acct	17 62
R. McCutcheon reb taxes in err	44 98
Co Treas uncol taxes 1920	743 31
W. Davidson sheep valuator	6 00
R. Scott liv hire Freeman Oliver	5 00
A. J. Peeling acct	14 25
S. Crossin sheep valuator 5 trips	10 20
A. Nicholls reb s labor	3 00
Reeve, Clerk and Breckenridge att court	8 00
C. Armstrong meeting place	10 00

Abstract Statement.	
Receipts	
Total Receipts	\$15412 09

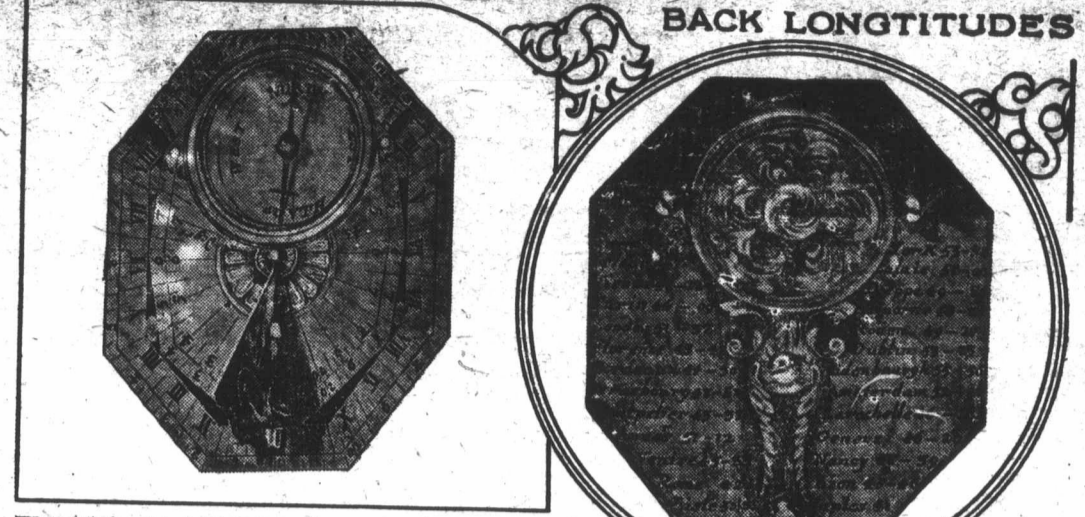
Expenditures	
Roads and Bridges	\$ 4168 72
Schools	3702 67
Salaries and Allowances	884 00
Municipal Govt and Election	66 00
Printing, Advt, Postage, etc	203 16
Law Costs and Salaries	177 29
Charity	259 29
Sheep	103 50
County Rate 1920	2900 00
Debentures	925 03
Loans, Interest and Exchange	427 18
Board of Health	295 54
Miscellaneous	1039 80
Balance on hand	214 94

Assets	
Balance on hand	\$ 214 94
Due on Roll 1920	203 51
Due on Roll 1921	10792 22

Liabilities	
Due Schools	\$ 2385 03
Due County 1921	8987 21
Bank Toronto loan	1800 00
Due on Debentures	87 27
Due on Debentures 1920	25 00
Due Collector 1920	125 00
Estimated abatement	200 00
Estimated unpaid accts, etc	125 00
Estimated unpaid taxes ret	1000 00
Co Treas Rolls 1920 and 1921	1526 16
Assets over Liabilities	\$11210 67

W. BURGESS, W. E. GRIFFITH,
 Treasurer. Reeve.
 Marriage Licenses issued at the Standard Office. Strictest privacy observed.

A UNIQUE COMPASS. BACK LONGITUDES



THE FACE OF THE DIAL & COMPASS

A silver mounted compass which is nearly 200 years old and is fitted with a sundial, also longitudes and latitudes of important cities and ports, was presented by a Miss Buckley, a passenger on board the Canadian Pacific liner Metagama, to Mr. E. Cox, the third class steward, as a token of gratitude while on a voyage to Canada.



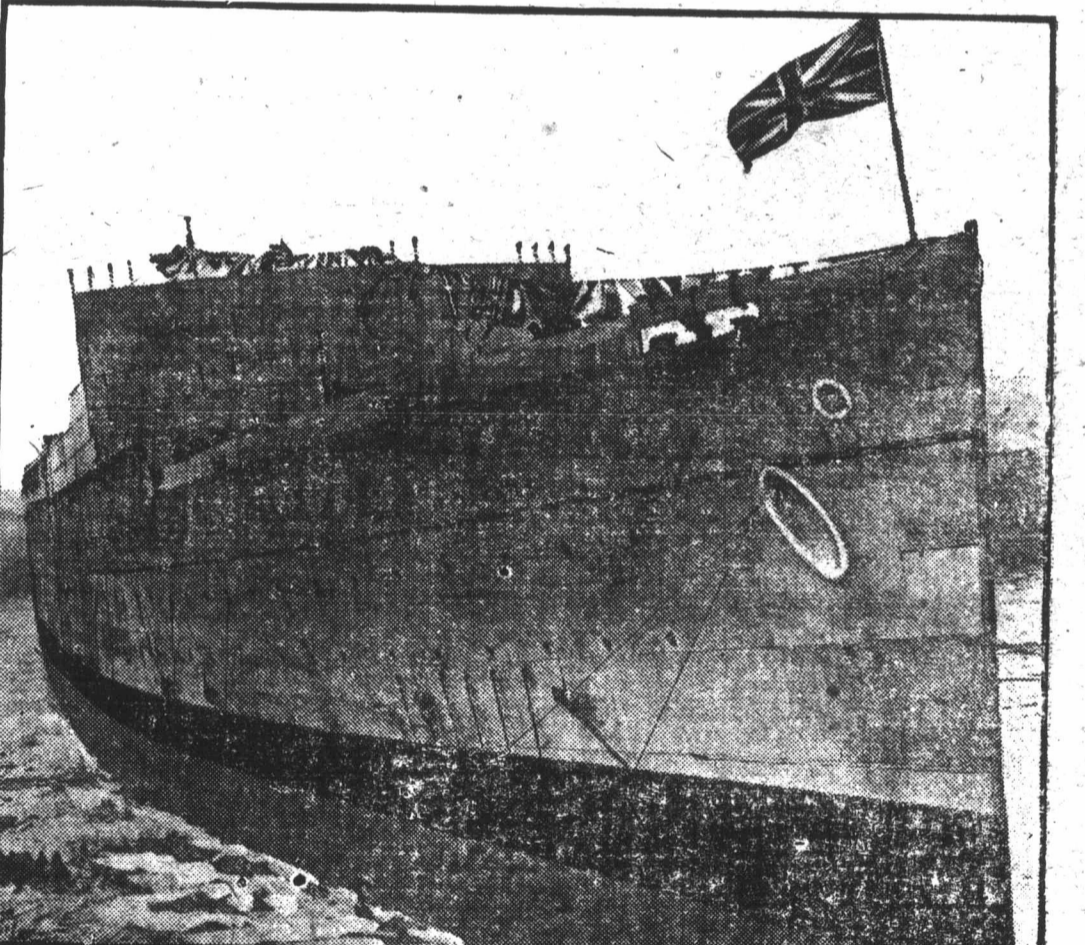
Mr. Cox states that the Squire of the parish of Weston, Norfolk, presented the compass many years ago to the Rev. Buckley of Weston, who was Miss Buckley's grandfather, and when he died he left it to her. The compass is in a well-preserved green shag case, inside which is the following inscription:—
 "This compass and dial was given me by Sir George Oxenden in 1773 it having been Sir Basil Oxwells, made at Paris about the year 1727 H. H."

When opened the sun dial and compass is on the face, while on the back of the compass are the longitudes and latitudes.

It was found a very valuable instrument for carrying in the old hunting days.

CASE, COMPASS & DIAL.

NEW C.P.O.S. LINER



THE EMPRESS OF CANADA AFTER BEING LAUNCHED.

The Empress of Canada, a twin screw geared turbine oil burning passenger liner, built to the order of the Canadian Pacific Ocean Services, Limited, especially for their trans-Pacific service, was recently launched at the yards of the Fairfield Shipbuilding & Engineering Co., Limited, Govan, Scotland.

The christening ceremony, which was performed by Mrs. G. M. Bosworth, the wife of the chairman of the Canadian Pacific Ocean Services, Limited, went through without a hitch.

The ship is 653 ft. long, 77 ft. 9 ins. wide and has a depth to the bridge deck of 53 ft. 6 ins. Her gross tonnage is about 22,000 tons, and she is arranged to carry about 790 first class, 106 second class, 238 third class passengers, and 547 of a crew. Of the cargo space, a large portion has been fitted for the carriage of silk. The ocean speed is about 21 knots. The vessel is built to the highest class of Lloyd's register, to full Board of Trade requirements and sub-divided in full accordance with the requirements of the Bulkhead convention. A complete system of telephones with a central exchange is fitted to the special and private suites and various offices, etc.

The dining saloon is on the upper deck and will accommodate 325 persons, a large reception room is situated forward of the dining saloon with passenger elevator at the fore end, on this deck also is a swimming pool 30 ft. long by 18 ft. wide, and a gymnasium. Throughout the vessel special attention is everywhere given to the fact that the Empress of Canada is to serve in a semi-tropical climate; public rooms are therefore large and airy and the ventilation amply arranged. The maiden voyage of the Empress of Canada will be a tour of the world, starting from Liverpool, March 15, 1921.