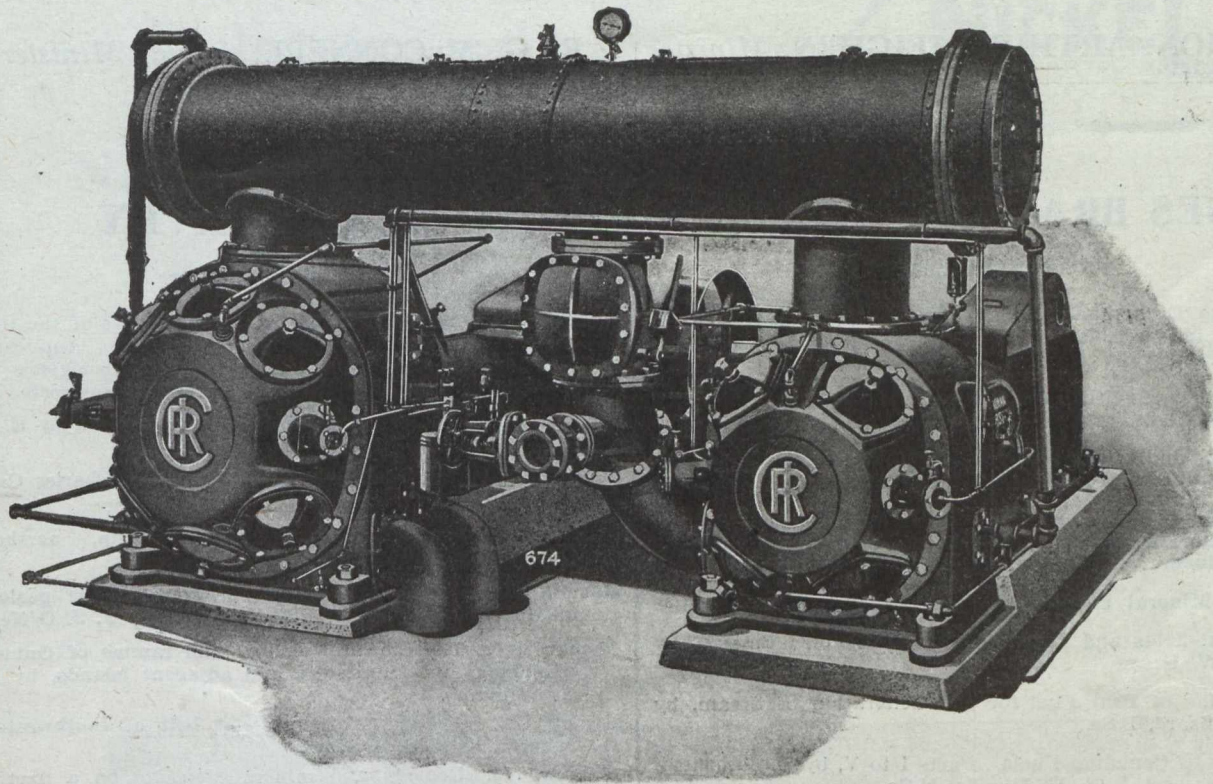


Where Economy and Reliability are Essential Use PRE-2 Compressors



Class PRE-2 Compressors are built for service where electric current is available and the demand for air is great, and will produce the largest possible volume of air for the least cost of power consumed. This is why these machines are the acknowledged leaders in the field of direct connected, electrically driven air compressing units.

A pretty strong statement, we will admit, but one that is easily and conclusively proven by the experience of many satisfied users, among whom are some of the largest mining companies in the world.

In every part of their construction the greatest care is taken to build them so that they will maintain this superiority for many years; materials are specially selected for the work they are called on to do, and all wearing parts are protected by trouble-proof automatic lubrication systems.

The highest compression efficiency is secured by I-R silent automatic inlet and discharge valves, complete water jacketing of cylinders and heads, efficient intercooling and liberal port and valve areas. Regulation is entirely automatic and is effected in five stages by a simple and reliable clearance controller.

You will find bulletin K-204 very informing
on modern two-stage compressors. Ask our
nearest branch for your copy.

Canadian Ingersoll-Rand Company, Limited

Sydney

Sherbrooke
Winnipeg

Montreal
Nelson

Toronto
Vancouver

Cobalt