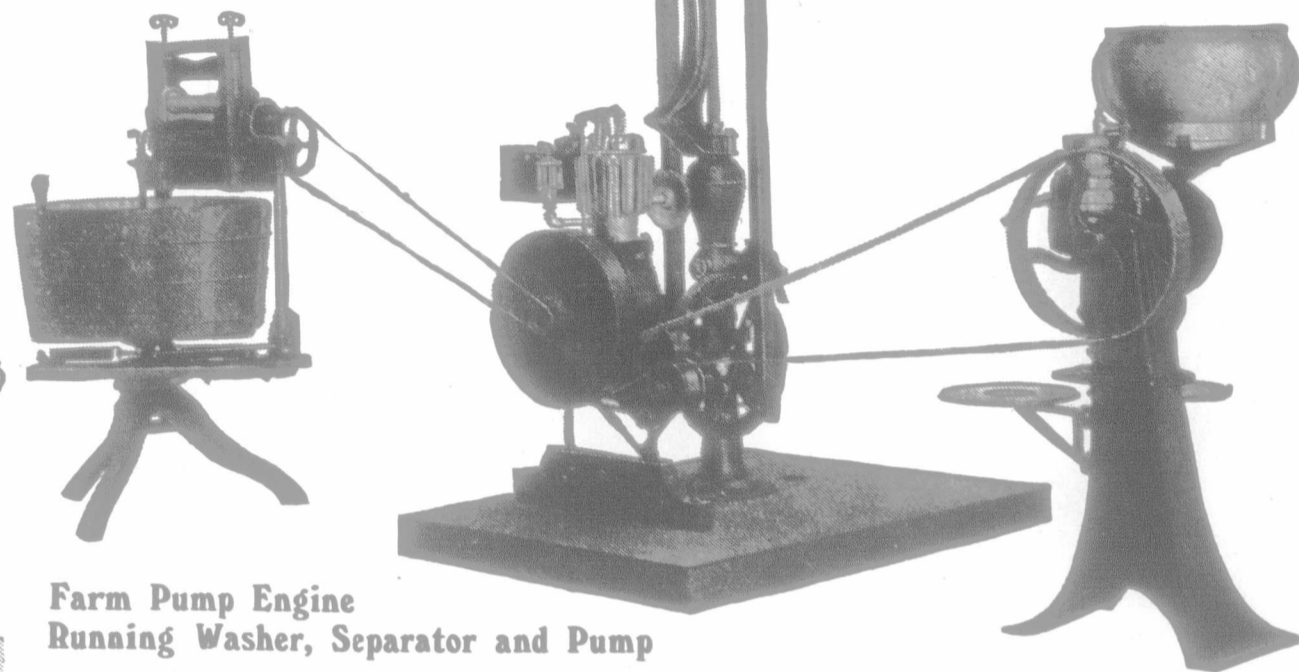


# I AM THE FRIEND OF THE FARMER AND HIS WIFE



## FARM PUMP ENGINE



Here are Some of My Favorite "Stunts"

- Running
- Corn Shellers
- Fanning Mills
- Washing Machines
- Churns
- Cream Separators
- Grindstones
- Drag Saws
- Spray Pumps
- Bone Cutters
- Watering Gardens
- Home Electric Light Plants
- Feed Choppers
- Polishing Wheels
- Printing Presses
- Clipping Machines
- Bilge Pumps
- Water Supply Systems
- Washing Buggies, Windows, etc.

**Farm Pump Engine Running Washer, Separator and Pump**

**I am a mighty good friend of the Farmer and his Wife**

I'm the Silent Partner of the farm and I work without pay for a lifetime. I'll tackle any task that comes my way. I'm so chock full of Power that I've got to keep busy.

I'm the Handy Man that helps the wife—the mother—do the very hardest work.

When Washday comes I'm on the job, running the washer and wringer and pumping the water, besides. I run the cream separator. I churn the butter. The busier I am the better I like it.

When I'm not helping the women folks you'll find me helping the men. I run the fanning mill, the feed cutter, the wood saw, the cider press, etc. I even turn the grindstone.

I run any kind of hand-power or foot-power machine that is ever used on the farm. I'm a star performer at pumping.

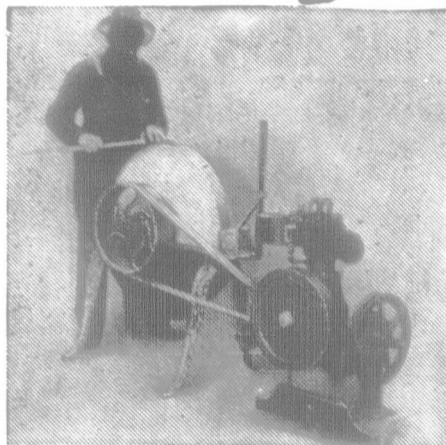
I can pump 800 to 1,000 gallons per hour and keep it up

all day long without getting overheated. I hook up to a pump in less than no time and need no cement foundation—no belts, no pump jacks, no arms, no anchor posts, tanks or towers. I'll run outdoors in a snowstorm as well as under a roof.

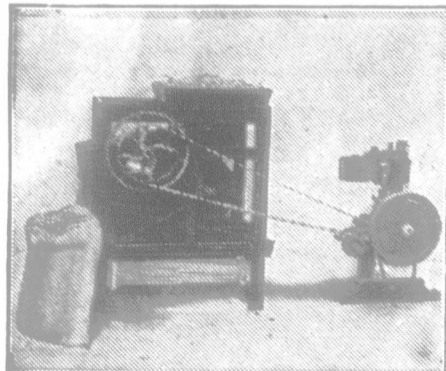
I worked in Labrador last winter when it was 40 degrees below zero.

The coldest weather can't knock me out—I simply refuse to freeze. Believe me, I'm worth while.

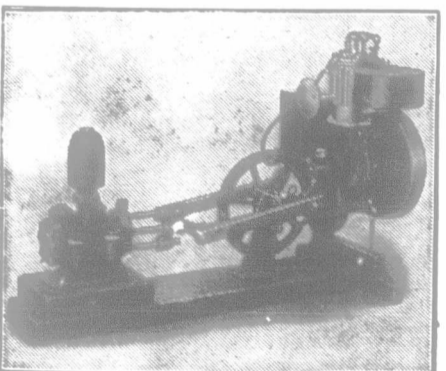
I can save so much time, work, wages and worry that you and your folks will wonder how you ever managed to run the place without my assistance.



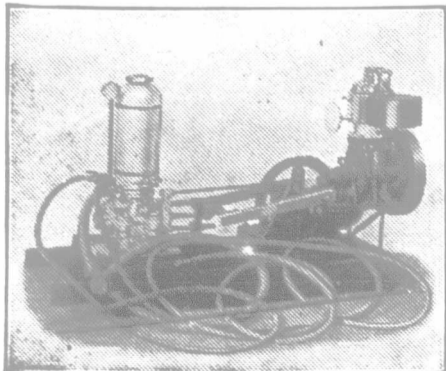
Engine Turning Grindstone



Engine Running Fanning Mill



Engine Running Volume Pump



Engine Running Sprayer

### Let Me Help You Run the Farm!

**ON EXHIBITION AT LEADING DEALERS**  
We have a very important proposition for implement dealers in territory where we are not represented. **ASK FOR FARM PUMP ENGINE.** Be quick.

**FULLER & JOHNSON**  
**FARM PUMP ENGINE**

### Woman's and Man's Greatest Work Saver

The success of the Fuller & Johnson Farm Pump Engine is unprecedented in the history of gasoline engines. We worked on this engine for years before we sprang the surprise. It took the farmers off their feet when we showed them what we had. This engine is different from anything ever known. It is a **PERFECT** air-cooled engine—without fans or cooling attachments of any kind. Working parts protected by Metal Case. **Self-cooling**, as explained in the catalog. It has the most complete lubricating system

ever conceived. The oil is carried up the piston by capillary attraction, just as oil goes up a lamp wick. A "dry piston" is an impossibility. Starts instantly. Needs no attention while running. It is as high grade in every way as automobile engines. Has pulley for running all kinds of light machines.

The whole thing comes to you complete—no extras to buy. Ready to run inside of 15 minutes after being uncrated.

### Successor to Windmills on Thousands of Farms

Thousands of Windmills are being torn down and replaced by Farm Pump Engines. For the price of an ordinary windmill you can get this great little engine, which not only **outpumps** the best Mill built, but does scores of other tasks about the place which no Windmill could ever touch.

Get a Farm Pump Engine and have an **unlimited fresh Water Supply.**

Use its surplus power for running all the light machines on the place. Don't depend on **wind** for your water supply. Give your stock fresh, tempered water—not ice water from a tank. You know what that means. Don't put off ordering a Farm Pump Engine until the next big storm rips your windmill from its anchorage and hurls it to the ground. The engine will pay big dividends on the small investment required. You spend a great deal of money for machinery that you use only a few weeks in a year. Here's one that is available **every day in the year** and costs you **less than a windmill.**

**Send the Coupon or a Letter for FREE ENGINE BOOKS Now**

If interested in larger engines, ask for Catalog of the world-famous Fuller & Johnson Double-Efficiency Engines. (2)

**BRANDON IMPLEMENT AND MFG. CO.**  
DEPT. 10., BRANDON, MAN. Established 1840

**Brandon Implement and Mfg. Co.** **COUPON**  
Dept. 10. Brandon, Man.

**Free Books and Bulletins**

Name .....

Town .....

State.....R.F.D. No. ....

F. & J. Farm Pump Engine Catalog.  
 F. & J. High-Powered Engine Catalog.