



The Canadian Pacific Railway Comp'y

The Empire's Greatest System



OWNING and OPERATING
ITS OWN:

ATLANTIC STEAMSHIP SERVICE.—Finest and fastest steamships in the Canadian service. Luxurious accommodation for all classes at moderate rates. Only four days at sea.

TRAIN SERVICE.—Finest trains in the world. Vestibuled throughout. Sleeping, Dining, Parlor Cars are specially constructed in the Company's own shops. Fast through double daily transcontinental train service across Canada.

TELEGRAPH SYSTEM.—Operating across Canada from St. John, N.B., to Vancouver, B.C., and also Vancouver Island.

GREAT LAKES STEAMSHIP SERVICE.—Operating magnificent fleet of five steamships, from Owen Sound to Port Arthur and Fort William. These steamships are unrivalled for comfort, speed and safety.

LAND DEPARTMENT.—For sale, upwards of 14,000,000 acres of choicest land in Manitoba, Alberta, Saskatchewan, and British Columbia.

HOTEL SYSTEM.—A chain of sixteen hotels along the Company's lines extending from the Atlantic to the Pacific coasts.

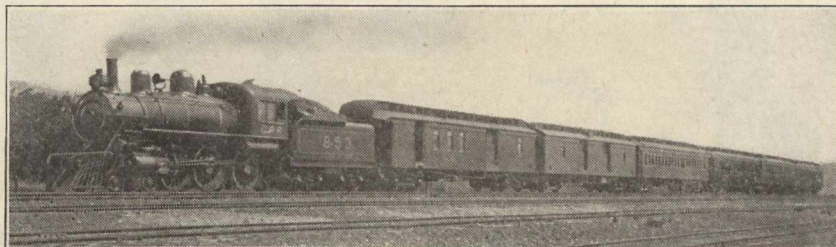
All information, rates, pamphlets, maps, reservations, etc., etc., may be had by applying to the Passenger Department, Canadian Pacific Railway Company—

62-65 Charing Cross, London, S.W., Eng.
67-68 King William St., London, E.C., Eng.
24 James Street, Liverpool, Eng.

GEO. McL. BROWN, European Manager, LONDON, ENG.

ROBERT KERR, Pass. Traffic Manager, MONTREAL, P.Q. (Canada)

The CANADIAN PACIFIC RAILWAY is the only transcontinental system in the world under one management, and it is the **ONLY DOUBLE TRACK TRUNK LINE** in Western Canada.



OWNING and OPERATING
ITS OWN:

BRITISH COLUMBIA LAKE AND RIVER SERVICE.—A fleet of steamships are operated on the inland lakes and rivers, in the fruit-producing district of British Columbia.

BRITISH COLUMBIA COAST SERVICE.—Operating in the Gulf of Georgia and Puget Sound, and extending from Seattle, Vancouver and Victoria, to Skagway (Alaska), fleet of fourteen fast steamships.

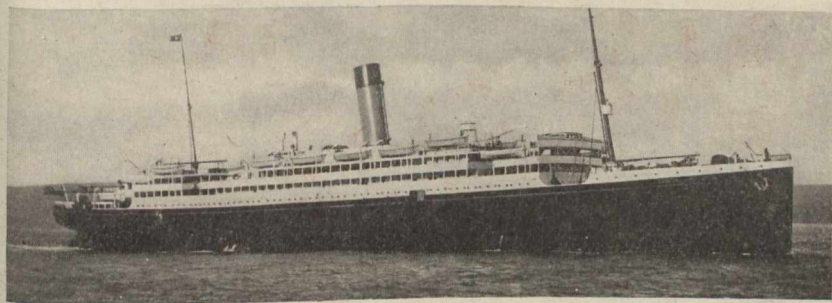
PACIFIC SERVICE.—Vancouver and Victoria, B.C., to Japan, China, Australia, New Zealand, Hawaiian Islands and Fijian Islands. Connections are made at Hong Kong for Around the World tours.

DOMINION EXPRESS SERVICE.—Parcels dispatched by fast and safe service to all parts of Canada and the United States.

TOURS IN CANADA.—The cost of a tour in Canada is moderate; the finest fishing and shooting resorts are within easy and comfortable access along the Company's lines.

THROUGH BILLS OF LADING ISSUED FOR FREIGHT.

67 St. Vincent St., Glasgow, Scotland.
18 St. Augustine's Parade, Bristol, Eng.
33 Quai Jordeans, Antwerp, Belgium.



White Star - - Dominion

Canadian Service Mail Steamers

MONTREAL--QUEBEC--LIVERPOOL

1910 WEEKLY SAILINGS 1910

R.M.S. LAURENTIC
14,892 tons. Triple screw.

R.M.S. MEGANTIC
14,878 tons. Twin screw.

Largest and most modern steamers on the St. Lawrence route. Latest production of the ship-builders' art; passenger elevator serving four decks. Every detail of comfort and luxury of present day travel will be found on these steamers, including orchestra. They proved very attractive last St. Lawrence season owing to their superb accommodation for First, Second and Third Class passengers.

Moderate Rate Service

R.M.S. CANADA, Twin Screw. R.M.S. DOMINION, Twin Screw.
One Class Cabin Steamers (called Second Class)

On these steamers the passengers receive the best the steamer affords at a very moderate rate; they are very largely patronized by those making a trip to the Old Country who wish to secure comfort at a moderate expenditure. Intending travellers are requested to communicate with Local Agents or to Company's Offices.

HEAD OFFICE - 30 James Street, LIVERPOOL
London City - 38 Leadenhall Street London West End, 1 Cockspur Street, S.W.

TORONTO
41 King Street East

MONTREAL
118 Notre Dame St. W.

TRAVELLERS' CHECKS ISSUED AVAILABLE ALL OVER THE WORLD.



The Only Double-Track Railway

Between Montreal, Toronto, Hamilton, Niagara Falls, London and other Principal Canadian Cities, also Detroit and Chicago; and the Longest Continuous Double-Track Railway in the World under one Management.

SPECIAL FEATURES

¶ Through trains are operated between Montreal and Portland, Boston, New York, Detroit and Chicago.

¶ Four trains each way daily between Montreal and Toronto, including the famous "International Limited."

¶ Four trains week days and two trains on Sundays, between Montreal and Ottawa.

¶ The "International Limited" the finest and fastest train in Canada runs every day between Montreal, Detroit and Chicago, reaching directly ten of the leading cities in Canada—Montreal, Kingston, Belleville, Toronto, Hamilton, Brantford, London, Woodstock, Chatham and Windsor.

¶ Finest modern equipment, including Pullman Sleeping Cars on through night trains and Parlor-Library-Cafe and Dining Cars on through day trains. The Dining Car Service is unexcelled.

¶ The roadbed is acknowledged to be the best—which adds much to the comfort of travel.

¶ The Grand Trunk is the scenic route through Canada, and is the only line reaching all tourist districts in the famous Highlands of Ontario.

¶ Communicate with any of the company's agents for rates and all particulars.

W. E. DAVIS
Passenger Traffic Manager
MONTREAL

GEO. W. VAUX
General Passenger Agent
MONTREAL

G. T. BELL
Asst. Passenger Traffic Manager
MONTREAL

F. C. SALTER
European Traffic Manager
17-19 Cockspur Street
LONDON, S.W., England