

ND TRUNK RAILWAY  
SYSTEM  
The Double  
Track Route

BETWEEN MONTREAL,  
TORONTO, DETROIT  
AND CHICAGO

Excellent dining car service  
Sleeping Cars on Night Trains  
Parlor Cars on principal Day

Information from any Grand  
Ticket Agents or C. E.  
District Passenger Agent.

LO SILO

Best Fresh Ensilage  
the last for the

HYLO SILO is per-  
air-tight. No frozen  
ensilage around the  
convenient and perfect  
ex, adjustable without  
or wrench. Made of  
Long Leaf Yellow  
to last a life-time.  
and when empty.

prices and catalogue.

ENTS WANTED.

Co. Ltd. 69 York St.  
Guelph

Steel Rails

Reinforcing Bridges  
Barn Driveways.

Cut any Length

J. GARTSHORE

Street West, Toronto

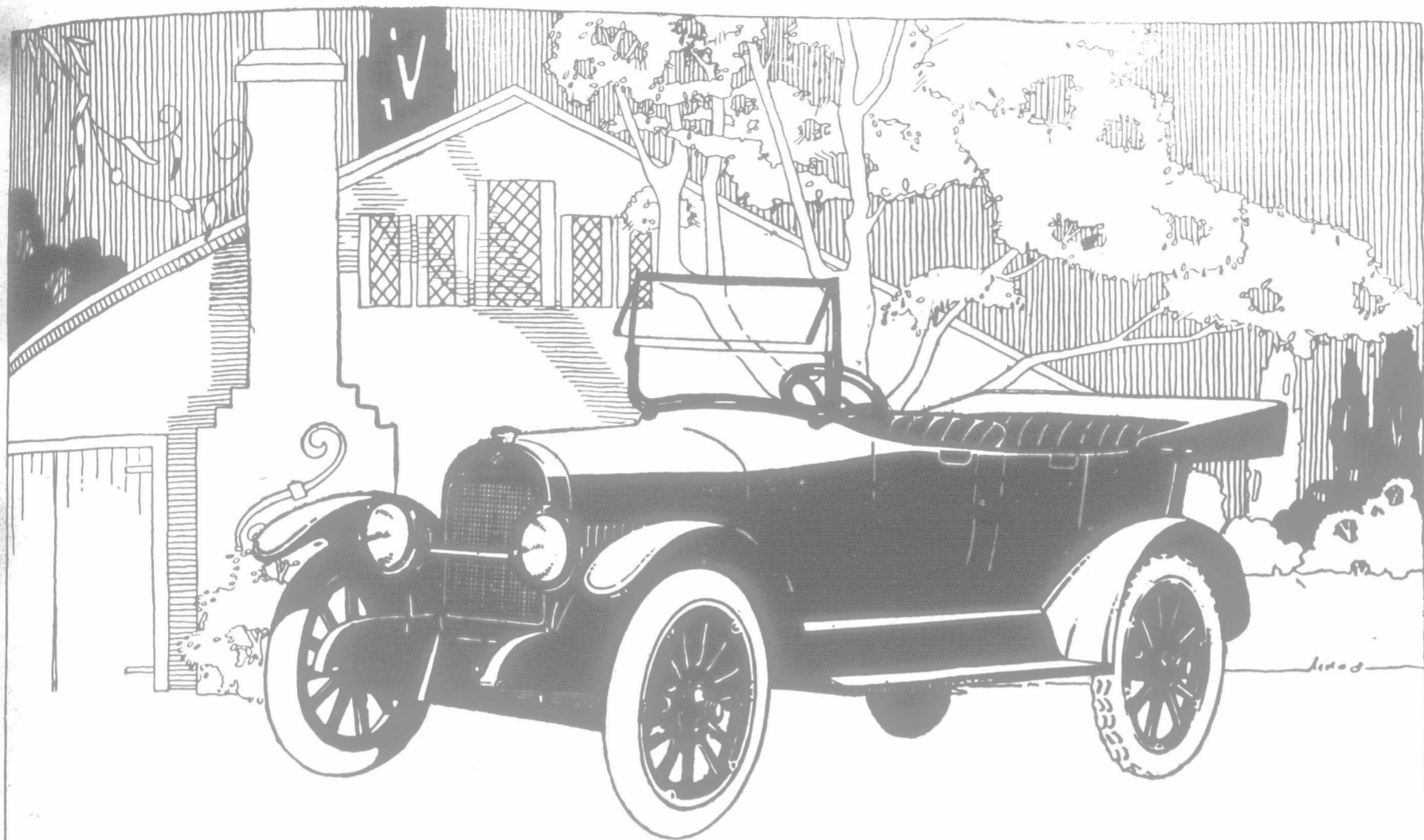
Roof

LATE

DA

Company  
Limited

Shine, Que.



THE more closely you investigate every detail of construction in the Gray-Dort, the easier it is to realize why men call this "The Value Car of the Year" and why doubled production has not met the demand.

The Gray-Dort dealer will gladly demonstrate for you—the Gray-Dort 5-passenger touring car, \$1465 f.o.b. Chatham, war tax extra; the 2-passenger roadster, the same price; the Gray-Dort Special, \$150 extra on the standard; the beautiful Gray-Dort Ace, \$255 extra on the standard.

GRAY-DORT MOTORS, LIMITED - Chatham, Ontario

Built in Canada by Skilled Canadian Workers and Canadian Capital

# GRAY-DORT