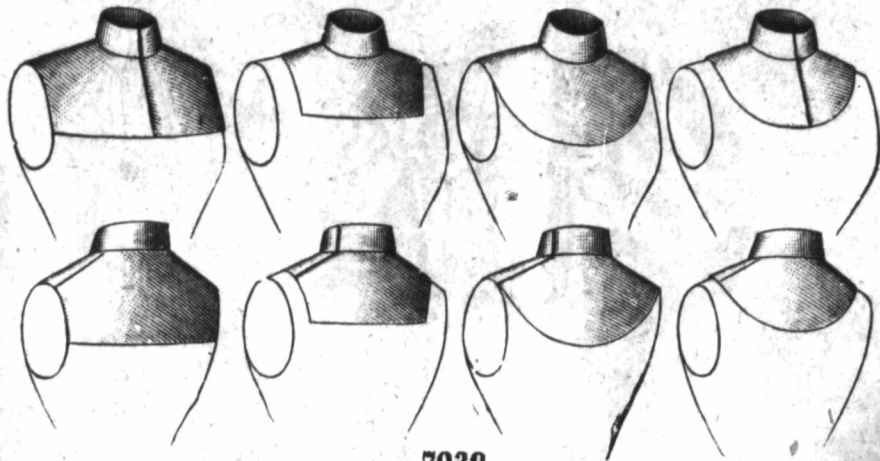
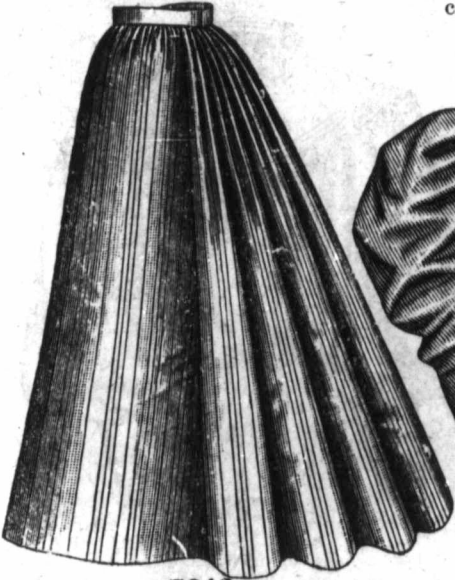


7042



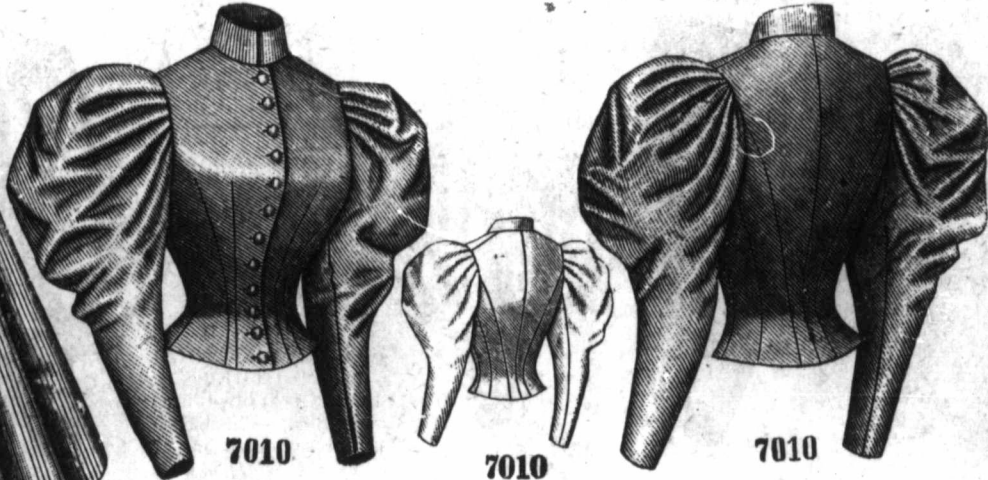
7039

LADIES' SQUARE AND ROUND YOKE. (TO BE MADE DEEP OR SHALLOW AND CLOSED IN FRONT OR ON THE SHOULDER.) (COPYRIGHT.)
 No. 7039.—One of these yokes is again shown at figure No. 259 K on this page. The pattern is in 3 sizes, small, medium and large. In the medium size, either style of yoke closing in front needs $\frac{3}{8}$ yard of goods 20 inches wide, or $\frac{3}{4}$ yard 27 inches wide, or $\frac{1}{2}$ yard 36 inches wide; while either style closing on the shoulder requires $\frac{3}{8}$ yard 20 inches wide, or $\frac{3}{4}$ yard 27 inches wide, or $\frac{5}{8}$ yard 36 inches wide. Price of pattern, 10 cts.



7042

MISSES' FOUR-GORED SKIRT, HAVING A STRAIGHT BACK—BREADTH AND SIDE-GORES STRAIGHT AT THEIR FRONT EDGES. (COPYRIGHT.)
 No. 7042.—The pattern of this skirt is in 7 sizes for misses from 10 to 16 years of age. For a miss of 12 years, the garment will require $3\frac{1}{4}$ yards of material 22 inches wide, or 3 yards 30 inches wide, or 2 yards 44 inches wide, or $1\frac{3}{4}$ yard 50 inches wide. Price of pattern, 20 cents.



7010

7010

7010

LADIES' PLAIN ROUND BASQUE, WITH TWO-SEAM LEG-O'-MUTTON SLEEVE, WHICH MAY BE GATHERED OR PLAITED. (COPYRIGHT.)

No. 7010.—This basque is again shown at figure No. 268 K on page 4. The simplicity of the mode affords opportunity for the use of garniture in the shape of insertion or passementerie, yokes, plastrons, etc. The pattern is in 15 sizes for ladies from 28 to 48 inches, bust measure. For a lady of medium size, it will need $3\frac{3}{4}$ yards of goods 22 inches wide, or $2\frac{7}{8}$ yards 30 inches wide, or $1\frac{7}{8}$ yard 44 inches wide, or $1\frac{3}{4}$ yard 50 inches wide. Price of pattern, 25 cents.



7010



7009



7009



7009

LADIES' GORED CAPE. (KNOWN AS THE COLUMBIA CAPE.) (COPYRIGHT.)
 No. 7009.—This pattern, shown at figure No. 272 K on page 1, is in 10 sizes for ladies from 28 to 46 inches, bust measure. For a lady of medium size, it needs $4\frac{3}{4}$ yards of goods 22 inches wide, or $2\frac{3}{8}$ yards 44 inches wide. Price of pattern, 25 cts.



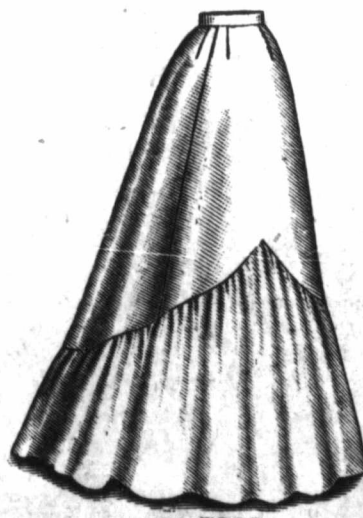
7013



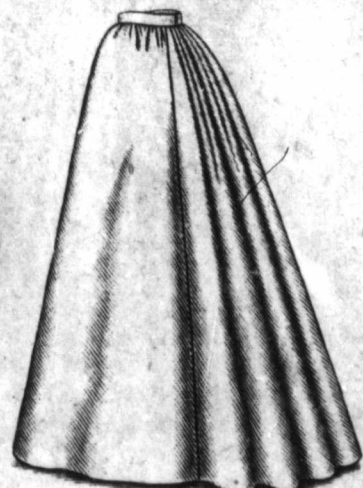
7013

LADIES' FIVE-GORED SKIRT (TO BE GATHERED OR DART-FITTED IN FRONT AND GATHERED OR PLAITED AT THE BACK), WITH A GRADUATED, GATHERED FLOUNCE THAT MAY SHAPE ONE OR TWO POINTS AT THE TOP IN FRONT. (COPYRIGHT.)

No. 7013.—This pattern is in 9 sizes for ladies from 20 to 36 inches, waist measure. For a lady of medium size, the skirt with the flounce requires $8\frac{3}{8}$ yards of goods 22 inches wide, or 8 yards 30 inches wide, or $5\frac{3}{4}$ yards 44 inches wide. Without the flounce it needs $5\frac{3}{8}$ yards 22 or 30 inches wide, or $4\frac{1}{4}$ yards 44 inches wide. Price of pattern, 30 cents.



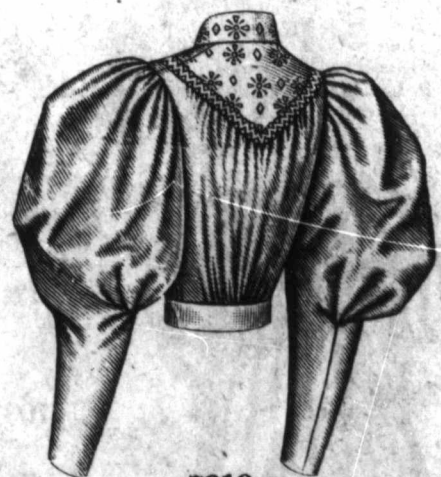
7013



7013



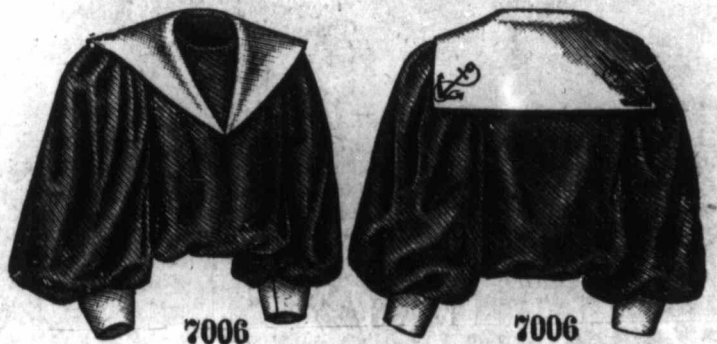
7019



7019

LADIES' WAIST, WITH FULL OUTER-BODY OUTLINING A POINTED YOKE. (COPYRIGHT.)

No. 7019.—The pattern of this prettily fashioned waist is in 13 sizes for ladies from 28 to 46 inches, bust measure. For a lady of medium size, it needs $3\frac{3}{8}$ yards of wash goods 36 inches wide, together with $\frac{5}{8}$ yard of all-over embroidery 27 inches wide. Of one material it requires $4\frac{3}{4}$ yards 22 inches wide, or $3\frac{5}{8}$ yards 30 inches wide, or $2\frac{3}{4}$ yards 44 inches wide. Price of pattern, 25 cents.



7006

7006

GIRLS' SAILOR BLOUSE. (COPYRIGHT.)

No. 7006.—This pattern is in 7 sizes for girls from 3 to 9 years of age. To make the blouse for a girl of 8 years, requires $2\frac{1}{4}$ yards of blue and $\frac{1}{2}$ yard of white serge 40 inches wide. Of one material, it needs $3\frac{3}{4}$ yards 22 inches wide, or $3\frac{1}{4}$ yards 30 inches wide, or $2\frac{3}{4}$ yards 44 inches wide. Price of pattern, 20 cents.



FIGURE No. 259 K.—LADIES' VISITING TOILETTE.

FIGURE No. 259 K.—This shows one of the styles of yoke in pattern No. 7039 (copyright), which is shown again on this page; the pointed sleeve-cap in pattern No. 6996 (copyright), differently portrayed on its label; and sleeve No. 7055 (copyright), seen on page 4. The yoke and cap patterns are both in 3 sizes, small, medium and large; the sleeve pattern is in 7 sizes for ladies from 9 to 15 inches, arm measure; and each costs 10 cents. In the medium size, a pair of caps needs $\frac{3}{4}$ yard of goods 20 inches wide, and the yoke $\frac{3}{8}$ yard in the same width. For a lady whose arm measures 11 inches, a pair of sleeves calls for $3\frac{1}{8}$ yards of material 22 inches wide.