

slag was found scorched corn, together with the bones of birds and other animals. Several baskets in the room were more beautiful than those woven by the Navajos to-day, but they crumbled to dust when touched. Iron knives, stone battle axes and polished stone reflectors, and several musical instruments, including a fife, were in evidence, and well preserved. Many human bones were found in the regulation burial mounds. In the building are 1,200 to 1,500 rooms, only one of which was excavated. There are hundreds of similar ruins in the 25 miles from Bland to Espanola, showing that in that

district at one time lived more people than are in New Mexico to-day.

—The Anglo-Chinese Fibre Co. has produced samples of the raw Chinese grass as it is received from Hankow; and of the same grass carded, dyed, and undyed, and ready for spinning, as it will be prepared in the company's factory at home, its present appearance being hardly distinguishable from silk. Twenty bales have already been got ready for shipment home at the experimental factory at Hankow, and the company's process promises well.

C. E. RILEY & CO'Y.

281-285 Congress Street, Boston, Mass.

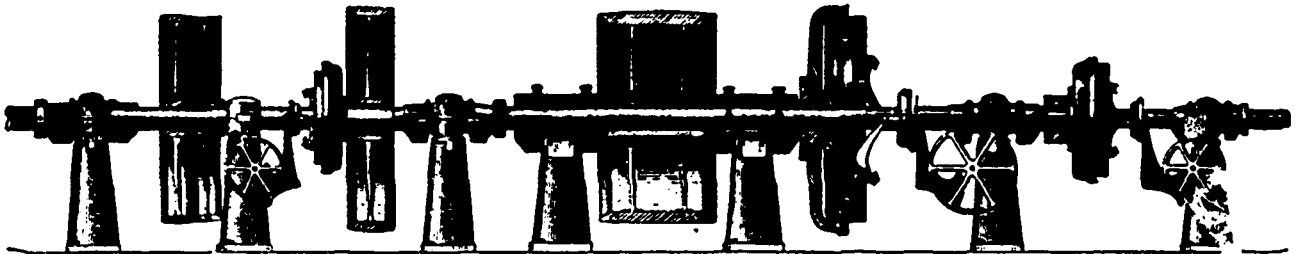
Builders and Importers of

COTTON, WOOLLEN, WORSTED

MACHINERY

CARD CLOTHING, EMERY FILLET, EGYPTIAN COTTON, SPINDLES, FLYERS, FLUTED AND SHELL ROLLS, GRINDING ROLLS, &c.

POWER TRANSMISSION MACHINERY. (COMPLETE OUTFITS.



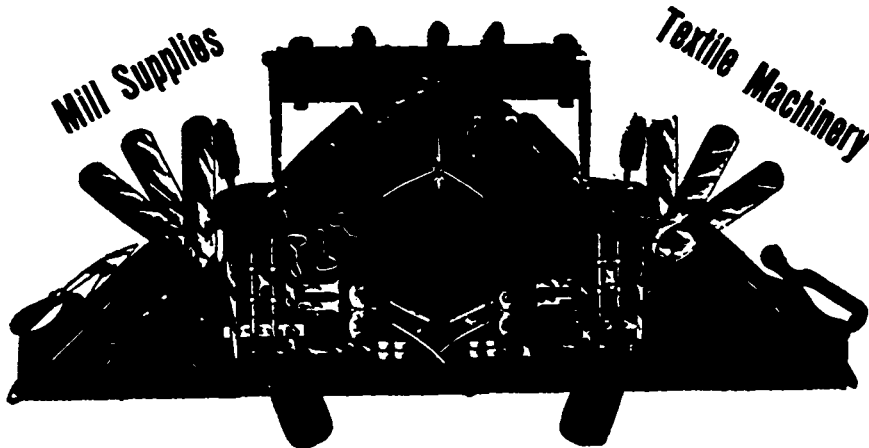
DODGE MANUFACTURING COMPANY, TORONTO, CAN.

SEND FOR 86 CATALOGUE FOR 1900

GEORGE REID & COMPANY,

WOOL MERCHANTS

'PHONE 8591



SOLE AGENTS FOR THE

Hamilton Cotton Co.'s Warps.

Samuel Law & Sons' English Card Clothing.

Francis Willey & Co., Bradford, Eng., Wool and Nolls.

Specialties—Collar Boards and Brass Collars for Jacks and Mules; also Steps.

OFFICE: 11-13 FRONT ST. EAST.

WAREHOUSES: ESPLANADE ST. (foot of Jarvis)

TORONTO

G. B. FRASER,

3 Wellington Street East
TORONTO

REPRESENTING

Miller Bros. & Co., Montreal; Paper and Celluloid Collars, Cuffs and Shirt Bosoms.

W. D. Van Egmond, Seaforth Woollen Mill; Etoffes Friezes and Tweeds.

D. Fisher, Paisley, Ont., Etoffes and Tweeds.

John J. Ashley & Co., Bradford, Eng., Dress Goods and Worsted.

Horner, Determann & Co., Barmen, Germany, Buttons, etc.

S. W. Whitam, Leeds, Eng., Woollens.

Merrinack Print Mfg. Co., Lowell, Mass.

Burton Eros & Co., New York; Linings, &c.

H. T. Lamkin & Co., Cotton Brokers, Vicksburg, Mississippi Long Staple Cotton a specialty.

GOP TUBES
Cones, Shells,
Worsted Tubes,
Conical Tubes,
MAYLINE TUBES,
Haworth & Watson, Lowell, Mass.