

HYPHOPHOSPHITES

The discovery by Dr. CHURCHILL, after years of patient research and experiment, of a SPECIFIC REMEDY FOR CONSUMPTION, marked a new and important Era in the Progress of Medical Science. The announcement of this discovery was made in the year 1887, to the Imperial Academy of Medicine, Paris. Since that time the truth of his Theory: that the IMMEDIATE, or PROXIMATE, CAUSE OF CONSUMPTION was the deficiency, or undue waste, of the Oxydizable Phosphorus normally existing in the economy; and that the SPECIFIC REMEDY for the disease consisted in supplying this deficiency, or undue waste, by means of a Preparation at once Oxydizable and Assimilable has been established by an array of facts, "UNPARALLELED IN THE ANNALS OF MEDICINE."

The Curability of Consumption.

We believe the question as to the CURABILITY OF CONSUMPTION has been conclusively settled in the affirmative by the results which have attended the administration of the HYPHOPHOSPHITES since the discovery of their therapeutic properties was announced to the world. And this fact can hardly fail to convey hope to thousands who are liable to, or are suffering from, this insidious and hitherto dreaded malady, that A REMEDY HAS BEEN FOUND, which, under definite conditions, renders "Cure the rule, and death the exception."

The action of the Hypophosphites upon the animal economy, when administered in the prescribed manner, is to restore by means of an Assimilable and Oxydizable preparation, the deficiency or undue waste of the Oxydizable Phosphorus normally existing, and the deficiency of which, however produced, is the immediate or proximate cause of Consumption.

They have also other effects, the importance of which can hardly be over-estimated:—1.—That of stimulating and increasing the NERVOUS ENERGY to its maximum force. 2.—Increasing the quantity and improving the quality of the blood. 3.—Strengthening the nutritive functions: thus maintaining these three conditions of robust health at their highest degree of intensity compatible with physical enjoyment.

Causes of Consumption.

Every kind of activity—intellectual, pastoral, locomotive or generative; all causes of depression, such as grief, overwork, excesses, fretting, insufficient food, rapid growth, pregnancy, nursing, long illness, wasting from fevers, protracted convalescence, &c.—is followed by an undue waste of the phosphorus of the system, as is proved by an increase in the excretions, of the "phosphates." If this waste is not arrested by rest, nutrition and a re-supply of the element, NERVOUS DEBILITY AND AN IMPROVEMENT OF THE BLOOD are inevitable consequences: BOTH OF WHICH ARE MARKED CHARACTERISTICS OF PULMONARY DISEASE.

Effects of the Treatment.

On the Nervous System.—One of the first effects is an INCREASE OF THE NERVOUS OR VITAL ENERGY, followed by a feeling of unusual comfort and strength. This is more marked, and earlier manifested, in proportion to the degree of weakness and nervous debility previously existing.

The nervousness, or irritability, is allayed; the patient experiences a pleasant calm; and the sleep becomes profound and refreshing.

On the Blood System.—The effect upon the Blood System is equally marked. The quantity and color are rapidly increased; the countenance becomes fuller and fresher; the lips red and the eyes brighter; the superficial veins are swelled out; and according to the doses employed and the duration of the treatment, the patient shows striking evidence of PLETHORA or fullness of blood.

The HYPHOPHOSPHITES, then, possess a TWO-FOLD AND SPECIFIC ACTION: on the one hand, they increase the principle, whatever it may be, that CONSTITUTES NERVOUS ENERGY; and on the other, are the MOST POWERFUL BLOOD-GENERATORS KNOWN.

On the Nutritive Function.—The appetite is increased often in an extraordinary manner; the patient gains flesh; and the features, especially after the first two or three weeks, show a marked improvement in appearance. The remedy acts beneficially in all cases of impaired nutrition.

THE COMPOUND SYRUP OF HYPHOPHOSPHITES is the most important Agent known to Medical Science, from ITS POWER TO RELIEVE EVERY FORM OF NERVOUS DISEASE. It is emphatically a NERVE FOOD; restoring the Vital Force, and re-invigorating all the Functional Processes of Life. Its anodyne effect is remarkable—tending to produce THE MOST REFRESHING AND RENOVATING SLEEP. It should be used promptly in every case of LOSS OF NERVOUS FORCE from whatever cause, as the EASIEST, MOST DIRECT, AND MOST APPROPRIATE REMEDY.

The Purity of the Hypophosphites absolutely essential.

THE ABSOLUTE CHEMICAL PURITY OF THE HYPHOPHOSPHITES IS THE FIRST CONDITION OF THEIR CURATIVE ACTION; when impure, they create a feeling of uneasiness and constriction in the epigastrium, which NEVER OCCURS, in any instance, with CHEMICALLY PURE SALTS. The manufacture of the HYPHOPHOSPHITES requires great delicacy of manipulation, and a large experience, which few chemists possess.

THE VICTORIA COMPOUND SYRUP OF

HYPHOPHOSPHITES

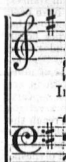
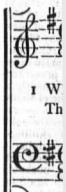
being PURE, contains nothing injurious to the constitution, and is the ONLY GENUINE and RELIABLE form of Dr. CHURCHILL'S GREAT REMEDY. It is made strictly in accordance with his FORMULA and DIRECTIONS, and is verified to be chemically pure, having been analyzed at the Laboratory of the Toronto University, by Professor Croft, one of the highest authorities in Canada. See the certificate of that gentleman on page 22 of this book.

THE VICTORIA HYPHOPHOSPHITES is also highly recommended, and is eminently beneficial in the treatment of Dyspepsia, Bronchitis, Asthma, Anemia, Loss of Appetite, General Debility, &c.

NUMBERLESS TESTIMONIALS

Have been accorded to its curative effects in the above diseases. We have selected one only out of the many, and this may be found on page 12, our limit of space precluding the insertion of more.

N.B.—This invaluable medicine is for sale by Druggists generally throughout the Dominion. Price \$1 per bottle. Full directions inside.



2 Who is
The cit
A passi
To mo
Again!
"Jesus

3 Jesus!
Man's j
And bu
Brought
The bli
"Jesus

4 Again!
His hol
He pau

The follow
will serve to s
and similar by
services, has b
"The move
new tone has i
portant, a ne
Musical Circle
"Mr. Sanke
fine, so true f
something high
has really tan