

If anyone was forgotten by "Santa"—we still have a good variety of SLIPPERS and other gifty things.
And all those who received GIFTS PURCHASED IN OUR STORES which do not fit or satisfy—are cordially invited to call and have them cheerfully exchanged.

SEASONABLE FOOTWEAR

Now that Christmas Shopping is over for another year, we have on display at our stores New and Tempting offerings in Midwinter Footwear.

We have a very extensive range of Warm Lined Boots in Men's, Women's and Boys'. These boots nearly all have Fibre Soles (waterproof) and it would not be necessary to wear rubbers with them.

FOR WOMEN

Black Calf Lace Boots, Camel's Hair Lining, Fibre Sole, \$5.25
The Same Boot in Mahogany Calf 6.00
Black Cravenette, Fleece Lined, Fibre Sole, Extra High Cut 9.00
Also With Quilted Lining, Not So High Cut 5.50

FOR MEN

Tan Calf, Camel's Hair Lined, Neolin Sole, Extra High Top \$10.00
Black Calf, Warm Lining, Fibre Sole, Ordinary Height 6.00

FOR BOYS

Black Calf, Warm Lined, Fibre Sole, Rubber Heel \$3.50

We also carry a big assortment of Felt Boots for Men and Women, as well as Gum Rubbers and Oil Tan Leather Boots for Men and Women. No need to have your feet suffer from the cold this winter, come in and let us fit you with what is best suited to your purpose.

HEADQUARTERS FOR RELIABLE FOOTWEAR
Proved by Forty Years of Shoe Selling

Waterbury & Rising, Limited

61 King Street 212 Union Street 677 Main Street

BROAD COVE COAL

Limited Quantity For Immediate Delivery

CONSUMER'S COAL CO., Limited

CHILDREN'S CHINA

Nursery Rhyme Decorations, Baby Plates,
Mugs and Cups and Saucers

W. H. HAYWARD CO., Limited

85 to 93 PRINCESS STREET

Prize for New Year's Whist Parties

What more suitable or acceptable than a box of dainties

DIANA SWEETS
the Chocolates of toothsome and
Top Quality. Strictly our own make.

FRESH FRUITS,
Hot Drinks, Sodas and Ices are extra
choice at

211 Union Street

THE STORE OF QUALITY

BRITISH CROWN

Assurance Corporation Limited of London, England

SECURITY EXCEEDS
SIXTY MILLION DOLLARS

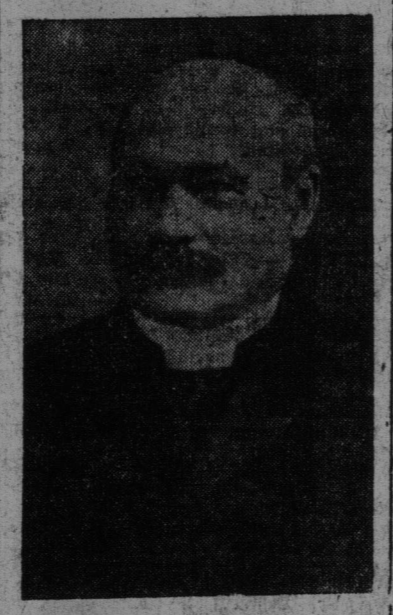
C. E. L. JARVIS & SON,

GENERAL AGENTS FOR MARITIME PROVINCES

REV. DR. CAMPBELL

DIED YESTERDAY

Rev. Dr. George Melkie Campbell, formerly of this city, and lastly of Sackville, died on Christmas morning in Bethesda Hospital, Hornell, N. Y. Since last summer Dr. Campbell had been engaged in a lecturing tour, under authority from the department of militia. His purpose was to set before the people of this and the neighboring country the ideals for which the allies are fighting, and since the close of the war he has continued to lecture on war subjects. While lecturing at Hornell he was stricken.



REV. G. M. CAMPBELL, D.D.

en with influenza four weeks ago, and pneumonia followed. Besides his wife, he is survived by one daughter, Mrs. (Captain) Kenneth S. Pickard of Sackville.

Through his work in the church and in other public activities Dr. Campbell was widely known throughout the maritime provinces and was honored and esteemed wherever he was known.

The late Dr. Campbell was born on September 28, 1882, at Wallace (N. S.), the home of his parents, Duncan and Margaret McIntosh Campbell. After completing his earlier education in the Wallace schools he took his arts and theological courses at Mount Allison University and was ordained to the ministry of the Methodist church in 1878. During his long career in the ministry he served as pastor of Centenary, Elmwood street and Queen square churches in this city, and also of churches in Sussex, Nashua, Newcastle, Charlottetown, Woodville, Fredericton and St. Stephen.

Entering upon a broader field of work, he accepted the district secretaryship of the Canadian Bible Society, with office in St. John, in 1905. He resigned this office in 1911 to become professor of homiletics and practical theology in Mount Allison University, from which institution he had received the degree of Doctor of Divinity in 1898. Soon afterwards he became principal of the Mount Allison Ladies' College and also principal of the Owens Art Institution and Conservatory of Music, which is affiliated with the university. A few years ago he conducted an active and successful campaign in behalf of the endowment funds of the university.

During his career, Dr. Campbell has served his church as secretary of his district, chairman of the district, president of the N. B. and P. E. I. conference and on several occasions as delegate to the general conference.

While located in St. John Dr. Campbell accepted the office of chaplain of the Royal Kennebecas Yacht Club and continued in this office until the time of his death. He was an active member of St. Andrew's Society and also served that organization as chaplain. He was a member of the F. & A. M., the I. O. O. F. and formerly of the Fortnightly and Canadian Clubs.

The body will be brought home for interment but where the burial will take place is not yet known here.



Society Brand Clothes

Woolen Goods for the Skating Season Will be in Demand

We have Warm Wool Skating Sets in grey and green, consisting of wide Scarf and close-fitting Turtleneck. Separate Wool Scarfs and Caps in all fashionable colors.

Sweaters in Brush or Ribbed Wool. Many colors to choose from. "Pull-over" and "Petrol" styles as well as Coat Sweaters.

Double Knit Spencers in rose and grey, for wearing under the coat.

(Costume Section—2nd Floor)

When Choosing Your Clothes, Choose the Kind That Have a Well-Known Reputation for Dependability

Our stocks of Men's, Young Men's and Boys' Suits and Overcoats are very complete and comprise many stylish models from "Society Brand" and other reliable makers. A variety of styles, fabric and sizes so broad every man or boy can find just the clothes to suit him.

Men's Overcoats range in price from \$15.00 to \$45.00
Boys' Overcoats range in price from \$ 5.75 to \$21.00
Men's Suits range in price from \$13.50 to \$40.00
Boys' Suits range in price from \$ 6.50 to \$20.00

(MEN'S CLOTHING SECTION—2ND FLOOR)

Popular Silks for Skirts, Dresses and Blouses

NOW IN STOCK

Black Silk Taffeta, 36 to 40 in. wide, \$2.10, \$2.50, \$2.75, \$3 and \$3.25 yd.
Black Messaline, 36 to 40 in. wide, From \$2.45 to \$3.00 yard
Black Jap, 36 in. wide, From \$1.20 to \$2.25 yard
White Habutal, 36 in. wide, From 95c. to \$1.70 yard
Messaline in navy, brown, grey, taupe, burgundy, wisteria, Copen., purple, etc., 36 in. wide, \$2.30 and \$2.50 yard
White Crepe-de-Chine, 40 in. wide, \$2.00 per yard
Colored Crepe-de-Chine, 40 in. wide, in good shades of light blue, rose, grey, apricot, mauve and navy.
Striped Silk for Skirts, in assorted combinations, From \$3.00 to \$3.65 yard
White Wash Satin, \$2.00 yard
(Silk and Fur Section—2nd Floor)

New Blouses in Latest Materials and Styles

A very comprehensive showing of latest style features in models that are sure to please. The materials are Crepe de Chine, Georgette, Jap Silk and fine Voiles. Beaded patterns, hand-embroidery, fine tuckings, hem-stitching and buttons are used extensively as trimmings. New neck styles in charming variety are seen. The collarless blouse being among the most favored for the winter season.

SLIP-ONS are made in many original designs, in shades to correspond with almost any costume. Prices range from \$4.75 to \$20.00
(SILK SECTION—2ND FLOOR)

Manchester Robertson Allison Limited
KING STREET • GERMAIN STREET • MARKET SQUARE •

MILK.

To the Editor of The Times:
Sir,—The writer is a farmer, who sells cream to a creamery, but not in or near St. John.
Cows, and particularly breeds of cows, differ greatly not only in the cream contents of their milk but also in the structure of the milk and cream. The Jersey and Guernsey cow gives a milk very rich in cream, averaging about 5 per cent cream, but the quantity of milk is not very great. The Holstein is the great "milk" cow, giving great quantities of milk; but except in some of the very modern strains, the milk is deficient in cream, with an average of perhaps not over 3½ per cent cream; that is, butter fat. For this reason a man with a stable of Holsteins may not be able to reach the standard of 8 per cent, the usual official standard, because his cows won't produce such milk. On the other hand a stall of Jerseys may much surpass the requirements. "The Holstein man may, however, add a few Jerseys

to his herd and so raise his average; and similarly a Jersey man may lower his high test. The latter also may (contrary to law in some places) put some of his milk through the separator and extract the cream, and then add the skim milk to his residue of high class milk. The idea of putting water in milk is out of date. It is skimmed milk that does the trick.
Cream from different breeds of cows varies. The fat globule of Jersey cream is much larger than that of Holstein cream. Compare Jersey and Holstein whole milk and the former looks to the eye much richer, while in fact the test may prove them similar, for the reason that the larger Jersey cream globule shows up more to the eye. But for infants and invalids the large fat globule is not so easy to digest as the smaller fat globule of the Holstein; the reason why some hospitals prefer Holstein to Jersey milk. A more important fact for babies is that milk from a cow just "freshened," that has just had her calf, is more nourishing; while that from a

farrow cow may cause grave stomach disorders. If a person can be sure of the milk, pasturizing is not an advantage. Few people realize the value of skim milk. Skim milk is all the milk except the oil or fat. The vitamins, the flesh and muscle and brain forming substances are in the milk. A pure 2 per cent cream whole milk is better than a dubious 5 per cent milk. The writer says this, although he has all Guernseys and Jerseys, and no Holsteins in his herd. Dirty stables, dirty "wet hand" milking and dirty cans are the contaminations.
Remedy: Inspect periodically all stables, the source of the city milk supply. Steam wash and sterilize all milk and cream cans before they leave the city. Don't leave it to the farmer. He has the inclination to wash out the cans properly. Dirty, rancid cans are the source of nine-tenths of the dirty milk. The health of the city depends upon this point. Have all milk for the city

under a city department, with the individual vendors as subsidiary to it, and each confined to his own district as set off by the department to prevent overlapping. Have one or more "centrals" where all milk for the city must first be delivered, with a stall or room for each vendor, and there the cans from the farmers emptied into bottles and only bottled milk delivered. A steam washery should be installed at each central when the empty bottles must be properly washed.
Each vendor could sell "milk tickets" good for a pint or quart of milk. A ticket in the "empty" set out at the customer's door pays for a full bottle in exchange. No ticket means no more milk wanted. This saves a lot of book-keeping and some bad debts.
"Mother," asked Johnny, "is the ink that daddy writes with indelible?"
"No, it isn't," answered his mother.
"Why?"
Johnny breathed a sigh of relief. "I'm glad it isn't," he said. "For I just spilled it all over the carpet."



Gold Soap is the best thing in laundry soap. It is also the largest cake for the money. It goes farther and does more work. If you should forget the name, just think of the metal that is most precious and goes farthest. That will call to mind the word gold, and the soap that is most precious and goes farthest.

Gold Soap is made in the Procter & Gamble Factories at Hamilton, Canada

Gold Soap
The Big Good Laundry



Economize!

USE

Old Dutch Cleanser

for cleaning and scouring—
Tinware
Graniteware
Woodwork
Oilcloth
Linoleum
Enamelled Sinks
and Bath Tubs
Cutlery
Refrigerators
Better and cheaper than Soap.



WHEN YOUR BOY COMES HOME

you will be glad you gave the last dollar you could spare to keep him at the front and to keep him happy, well clothed and well fed.

Shredded Wheat

paid its heavy toll for doing a restricted business during the war and it paid it gladly. It was a patriotic privilege. Shredded Wheat is the same breakfast cereal you have always eaten—clean, pure, wholesome and nutritious. Eat it with hot milk and a little salt. No sugar is required.