

Miners Wanted To Chew BULL DOG TOBACCO,

Because it is the only Tobacco
which does not excite **Thirst**
for Water after using
TRY IT!

The St. Lawrence Tobacco Co., Ltd.
—Montreal—
—W. B. Reynolds, Halifax Representative—

MINING SHOVELS

our 'FENERTY' Brand

COOK'S PAN SHOVELS,
COAL TRIMMERS SHOVELS,
SCRAPER SHOVELS, ETC.

—ARE USED BY—

The Largest Mines in Canada

MANUFACTURED BY
The HALIFAX SHOVEL CO.
HALIFAX, N. S.

ALL GOODS GUARANTEED.

Genuine Garlock Parkings
FOR ALL PURPOSES.

**Pipe and Boiler Coverings,
ENGINEERS SUPPLIES.**

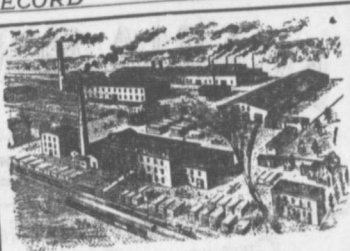
also
"Tauril" High Pressure Jointing
the Best Sheet Packing yet
Produced.

THE GARKOCK PACKING CO.
HAMILTON, ONTARIO.

Used by Collieries in Lancashire, & tafford-
shire & Yorkshire

•XTERRA' COLLIERY LAMP OIL
For Marsaut, Mussole Detector or Closed Lamp.

PURE WHITE FLAME. **LOW PRICE.**
E. WOLASTON, Dutton St. **MANGHESTER**
Sole Representatives for Canada, AUSTEN BROS.,
Halifax, N. S.



—MANUFACTURERS OF—
**RAILWAY
STREET and
MINING** **CARS,**
CAR WHEELS Church Pews.
FORGINGS & Fittings for Stores, Schools &c.
CASTINGS A SPECIALTY.

Large Stocks of Foreign and Domestic Lumber on Sale.
**Rhodes,
Curry & Co., Ltd.**
Branch ROBBIE STREET
HALIFAX, N. S. **AMHERST N. S.**
BUILDING MATERIALS
GENERAL

HOLIDAY FARES

VIA
**INTERCOLONIAL
RAILWAY**
FOR

**CHRISTMAS AND
NEW YEAR.**

FIRST CLASS ONE WAY FARE
Between all stations on the line.
Going Dec. 21 to Jan. 1, inclusive.
Returning until Jan. 3rd, 1910.

To stations beyond Montreal, —
Going Dec. 24, 25. Returning until
Dec. 27, 1909.

Going Dec. 31 and Jan. 1, Return-
ing until Jan. 3, 1910.
FIRST CLASS ONE WAY FARE
TO MONTREAL ADDED TO FIRST
CLASS ONE WAY FARE AND
ONE-THIRD BEYOND.

Going Dec. 21, 22, 23 24, 25, 26,
29, 30 31, Jan.

Returning until Jan. 5, 1910.

Territory—Detroit, Mich., Port
Huron, Mich., Fault Ste Marie,
Mich., Port Arthur, Ont., and points
in Canada east thereof.