

THE VICTORIA BRIDGE.—Connecting Montreal with the mainland. This view shows the old tubular bridge, built by Messrs. Peto, Brassey & Betts, and opened in 1860 by His Royal Highness the Prince of Wales (afterwards King Edward VII).

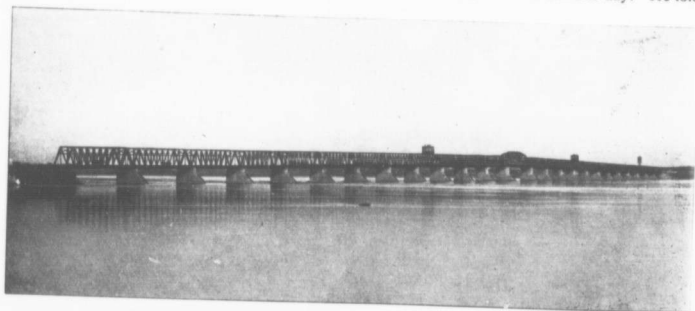
### Sir Wilfrid and the Sun.

At the Convention of the Life Underwriters Association of Canada, held recently in Ottawa, Sir Wilfrid Laurier, the picturesque ex-Premier of Canada and present leader of His Majesty's Loyal Opposition in the Canadian House of Commons, spoke in favour of life assurance in general and made interesting reference to the Sun Life of Canada as the company in which he took his first policy in 1878. The circumstances are outlined in Sir Wilfrid's remarks, which were in part as follows :

" . . . . . Mr. Borden and I do not always agree. (Loud laughter.) It is my misfortune, perhaps, to believe that sometimes he is in the wrong. But he thinks I am in the wrong sometimes. Reciprocity prevails between us at least, you see—but we will not discuss that question here. (Laughter and applause.) But, upon this occasion, without pre-concert between us,

Mr. Borden and I are at one in offering to you the warmest possible welcome to Ottawa. . . .

" I have been studying, not perhaps in close detail, but somewhat attentively, the development made by the life assurance business in Canada. That development is reasonably satisfactory, while not, in my judgment, wholly as satisfactory as it ought to be. There is an increase every year in the amount of assurance done, in the number of policies carried by the people. Still, the increase is not all that it ought to be. For I have a very strong conviction that every man living in a civilized country like Canada ought to carry some assurance at least. (Loud applause.) I have a friend about my own age who, like myself, was not born with a golden spoon in his mouth, but had to make his own way in the world. But he never would carry an assurance policy on his life. I was discussing this with him one day. He told



THE VICTORIA BRIDGE.—This view shows the bridge as it stands to-day.