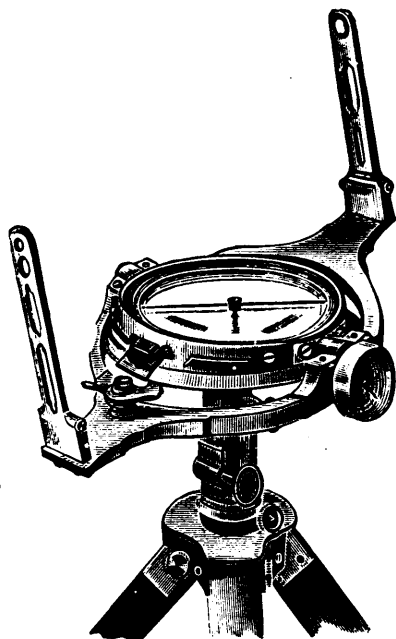


DAVIS'S IMPROVED HEDLEY DIAL

with SIGHTS and
HOFFMAN PATENT TRIPOD HEAD.

JOHN DAVIS & SON, Ltd.

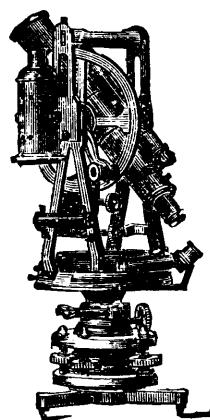
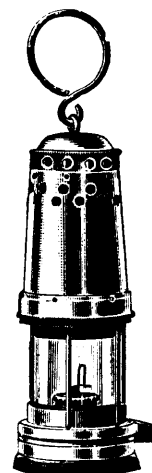
DERBY, ENGLAND.

MINING, SURVEYING, ENGINEERING
AND
MATHEMATICAL INSTRUMENTS.

Miners Safety Lamps

SOLE REPRESENTATIVE FOR CANADA

FRANCIS T. PEACOCK, 204 St. James St.,
MONTREAL.



Surveying, Mining and Engineering Instruments

ACCURATE AND **MINING TRANSITS** MOST IMPROVED

A COMPLETE LINE OF ENGINEER'S INSTRUMENTS AND SUPPLIES.

Reasonable Prices.

Send for Catalogue.

Repairs a Specialty.

HEARN & HARRISON 1640-1642 **MONTREAL**
NOTRE DAME STREET

A. LESCHEN & SONS ROPE CO.

—MANUFACTURERS OF ALL KINDS OF—

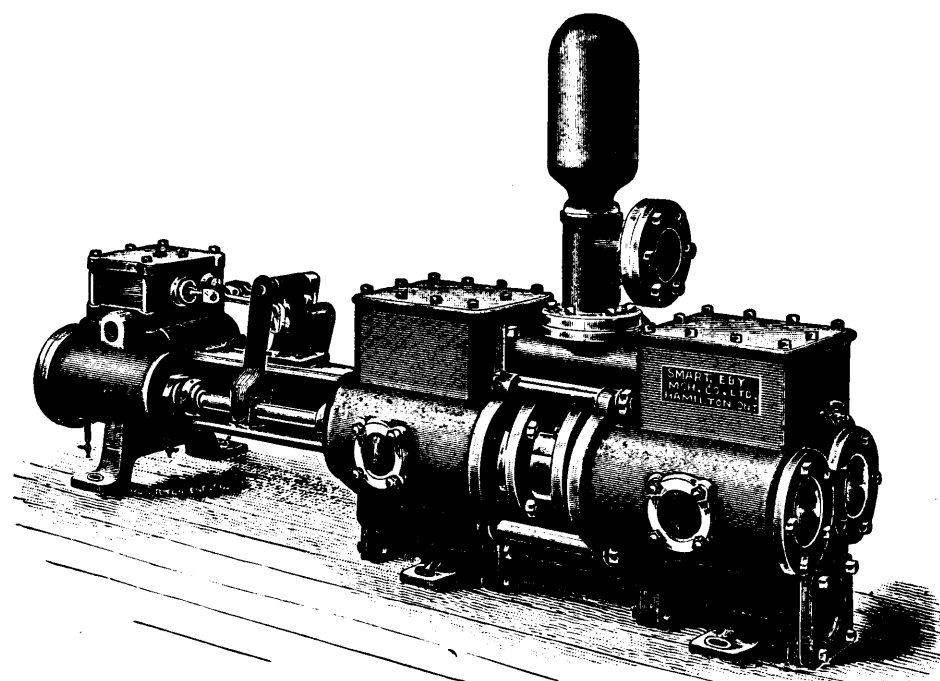


PATENT-FLATTENED
STRAND WIRE ROPE.

Round Strand Rope Also **Aerial Wire Rope** **TRAMWAYS**

FOR TRANSPORTATION OF ORE, TIMBER, &c.

Main Office : 920-922 North Main Street, ST. LOUIS, MO.

Branch Offices : 92 Centre St., New York City, N.Y.
47-49 South Canal St., Chicago, Ill.

Impulse Water Wheels
Steam and Power Pumps
Gas and Gasoline Engines
Electric Light Engines
Mill Engines
Boilers

THE SMART-EBY MACHINE CO.

LIMITED

191 Barton Street East,

HAMILTON, ONT.

WESTERN OFFICE : 419 Hastings St., Vancouver, B.C.

Correspondence Solicited.