

# WHITE STAR-DOMINION LINE

## ROYAL MAIL STEAMSHIPS

S.S. "Laurentic," 14,892 tons

S.S. "Megantic," 14,900 tons

### MONTREAL TO LIVERPOOL

S.S. Megantic, Nov. 13th

S.S. Dominion, Nov. 20th

(These steamers carry passengers.)

### PORTLAND TO LIVERPOOL

S.S. Cornishman, Nov. 27th

S.S. Canada, Dec. 4th

### MONTREAL TO BRISTOL

S.S. Manxman, Nov. 6th

S.S. Turcoman, Nov. 20th

Favorite steamers for all kinds of perishable cargo, having fan ventilation, cold storage and cool air chambers.

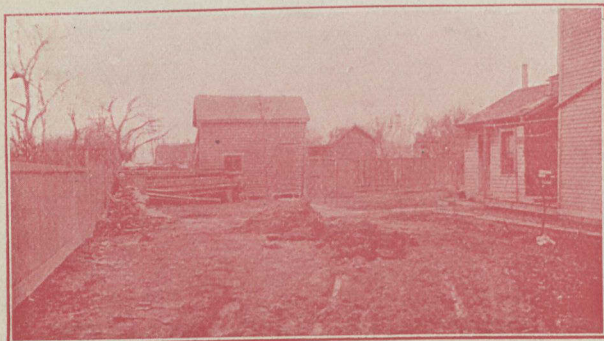
# WHITE STAR--DOMINION LINE

M. A. OVEREND }  
J. W. WILKINSON } Travelling Freight Agents

MONTREAL OFFICE, 118 Notre Dame St. W.  
PORTLAND OFFICE, - - - 1 India St.

GEORGE W. TORRANCE, Freight Agent.  
28 Wellington St. E., TORONTO

Mention The Canadian Horticulturist when writing.



BEFORE IMPROVEMENT

town lot too small for us to develop according to your desires. We want you to feel free to use this department at any time. Call upon us if you desire a re-arrangement of your place. We are glad to undertake any work along this line. If our plans please you we shall be glad to supply you with stock necessary to carry out the scheme.

Catalogue Free

### The New VIOLET BLUE ROSE

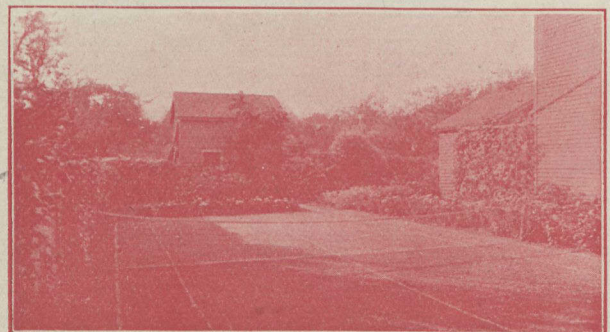
The New Rambler (Violet Blue), hailed by the German rose growers as the forerunner of a genuinely corn-flower blue rose, is a seedling of Crimson Rambler, very vigorous and hardy.

## ROSE TAUSENSCHON

This is a very beautiful New German Rose. In English "Tausendschon" means Thousand Beauties. The most sensational Climbing Rose yet introduced, not barring the great Crimson Rambler.

## Landscape Gardening

WE are pleased to furnish planting plans, designs for formal, old-fashioned and rose gardens. We have practical and artistic experts on landscape development in every branch and are glad to advise on every detail. No estate too large—no city or



AFTER IMPROVEMENT

**BROWN BROS. CO., Nurserymen, Ltd.** P. O. Brown's Nurseries, Ont.