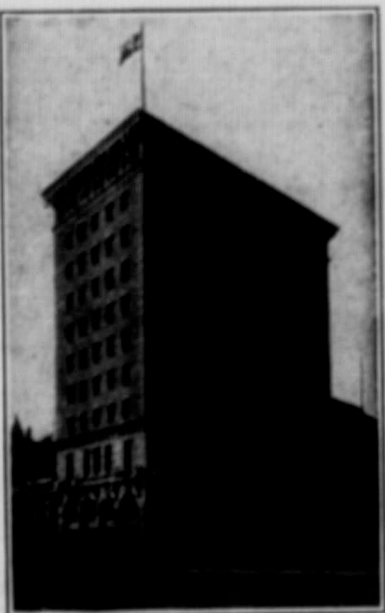


UNION BANK OF CANADA

HEAD OFFICE: WINNIPEG ESTABLISHED 1848
 Paid-up Capital \$5,000,000
 Reserves and Undivided Profits 1,175,000
 Total Assets, over \$6,000,000
 HON. JOHN SHARPLES, Honorary President JOHN GALT, President

Vice-Presidents—WM. PRICE and R. T. RILEY.
 DIRECTORS
 W. H. ALLAN S. HAAS G. H. THOMPSON
 E. BARRER E. L. DREWRY F. E. KEMANTON W. SHAW
 M. BULL E. E. A. DUVARNEY G. F. REID
 G. H. BALFOUR, General Manager H. B. SHAW, Assistant-General Manager
 F. W. S. CRISPO, Superintendent of Branches

WESTERN BRANCHES OF UNION BANK OF CANADA
MANITOBA—Baldur, Birtle, Bolesrain, Brandon, Carberry, Carman, Carroll, Clearwater, Crystal City, Cypress River, Dauphin, Deloraine, Glenboro, Hamiota, Hartney, Holland, Killarney, Manitow, Melita, Minnedosa, Minto, Morden, Neepawa, Newdale, Nianga, Rapid City, Roblin, Russell, Shoal Lake, Souris, Strathclair, Virden, Waskada, Wawanesa, Wellwood, Winnipeg
 Corydon Avenue Logan Avenue
 North End Portage Avenue
 Sargent Avenue



SASKATCHEWAN—Adanac, Alask, Arcola, Assiniboia, Buchanan, Cahri, Canora, Carlyle, Craik, Cooper, Cut Knife, Esterhazy, Eyebrow, Fillmore, Gravelbourg, Gull Lake, Herbert, Humboldt, Indian Head, Jansen, Kindersley, Kerr Robert, Landis, Lang, Lanigan, Lemberg, Lumsden, Luss Land, Macklin, Maple Creek, Marysville, Milestone, Moose Jaw, Mousomin, Nether Hill, Neudorf, Ogema, Outlook, Oxbow, Fense, Perdue, Plenty, Qu'Appelle, Regina, Rocanville, Rosetown, Saskatoon, Scott, Strassburg, Swift Current, Simpson, Sisseton, Southey, Tessier, Theodore Togo, Tompkins, Vanguard, Viceroy, Wapella, Watrous, Webb, Weyburn, Wilkie, Winsthorst, Wolseley, Yorkton, Zealandia.
ALBERTA—Airdrie, Ait, Barons, Bashaw, Bassano, Bellevue, Blackie, Blairmore, Bowden, Bow Island, Brooks, Calgary, Carbon, Cardston, Carleton Place, Claresholm, Cochrane, Consort, Cowley, Didsbury, Edmonton, Fort Saskatchewan, Grande Prairie, Grassy Lake, High River, Hillcrest, Innisfail, Irvine, Lacombe, Langdon, Lethbridge, Macleod, Medicine Hat, Okotoks, Parkburg, Picher Creek, Seven Persons, Strathmore, Swallow, Three Hills, Wainwright.

Head Office, Winnipeg
BRITISH COLUMBIA—Enderby, Hazelton, Nanaimo, New Hazelton, Prince Rupert, Telkwa, Vancouver—City Heights, Cordova St., Fairview, Granville and Robson St., Main St., Mount Pleasant; Vernon, Victoria. Over 250 Branches in Nova Scotia, New Brunswick, Quebec, Manitoba, Saskatchewan, Alberta, British Columbia.
 SPECIAL ATTENTION GIVEN TO FARMERS' BUSINESS. GRAIN DRAFTS NEGOTIATED. INTEREST ALLOWED ON DEPOSITS.
 Agents and Correspondents at all important centres in Great Britain and the United States.
 LONDON, ENG., BRANCH: No. 51 THREADNEEDLE ST., E.C.
 A general Banking business transacted.
 WINNIPEG BRANCH D. M. NEEVE, Manager

THE HOME BANK OF CANADA

ORIGINAL CHARTER 1854

A CONVENIENT FORM OF INVESTMENT.

For persons who have not the time to worry about their investments there is no more convenient, nor safe method of securing an adequate return upon surplus cash, or funds, than through a deposit account in a Chartered Bank. The principal remains absolutely secure, and available with compound interest added upon demand any hour during a banking day.

HEAD OFFICE: TORONTO

Branches and Connections Throughout Canada.

Winnipeg Office: 426 Main Street.

W. A. MACHAFFIE, Manager.



ATLAS PORTLAND CEMENT

"THE STANDARD BY WHICH ALL OTHER MAKES ARE MEASURED"

Do you know that the quality of cement depends upon many things, but when all else is right the most important point to consider is uniformity? Atlas Portland Cement is always the same—the bag you buy tomorrow and the bag you may buy six months from now. Always the same, whether you buy a small quantity or a carload. Stick to Atlas.

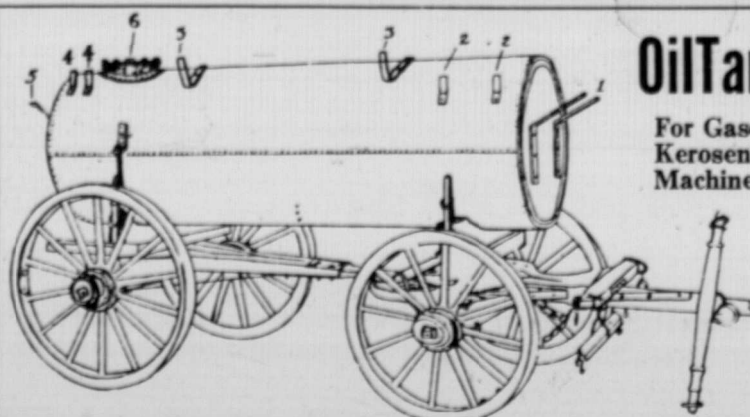
Read our book—

"Concrete construction about the home and on the farm"
 Our free book for farmers

It is a mine of practical information. It is not a catalog. It is a text-book. Send for the book today. It is free.

If your dealer cannot supply you with Atlas, write to

THE ATLAS PORTLAND CEMENT COMPANY, DEPT. 166 30 BROAD ST., NEW YORK
 Largest productive capacity of any cement company in the world. Over 50,000 barrels per day



Oil Tanks

For Gasoline Kerosene or Machine Oils

All Sizes and Capacity Stock Sizes and To Order Special Tank for Farm Use

Size—3 ft. x 10 ft. long. Capacity—10 barrels or 420 imperial gallons. Weight—900 lbs., steel gauge No. 11. Equipped ready for setting on wagon, \$80 Cash, f.o.b. Winnipeg

Vulcan Iron Works, Limited, Winnipeg, Man.

OLD FRIENDS

Take Advantage of this Unique Offer

New Friends Everybody

MANY of our subscribers are renewing just now for two, three and five year periods. This gives our patrons a great saving over our regular price, and does away with the bother of renewing each year. Our rates are:

One Year	-	-	-	\$1.00
Two Years	-	-	-	\$1.50
Three Years	-	-	-	\$2.00
Five Years	-	-	-	\$3.00

Now is the time to send your orders in. If your subscription has not yet expired, this will not hinder you from taking advantage of the foregoing remarkable offer. Send us your order before the fall rush commences so that you will not miss a single issue.

MAIL COUPON TO-DAY

THE GRAIN GROWERS' GUIDE

Enclosed please find the sum of \$_____ to renew my subscription for One, Two, Three, Five years.

Please draw your pen through the number of years you desire the subscription to run

Name _____
 Post Office _____
 Province _____

September
 We believe that every man who will take the time to read this Guide will have reason for any person's praise. We advertise our schemes, and things in general. We public advertising such. Rates for be seen on rates may be. Change a matter must vance of p

What is the solution? It is men, women on the farm in autumn social time, their new farm life, planting grain, on the prairie with which day in the They speak practised in they come. conditions that the best of how they contrast them met with by talk of the citizens and to play in the of the new twentieth century and women assisted to re Here in Grain Growers are d Methodist, intermingling Here the exchange Liberal or ligious is g erhood all The truth v ting them twentieth prairie, a bating club and board It is the the Empir hood. He dred and t homogene giving to stration o tablish th mountain tional riv creeds all demonstra coming at the federa hood of m Do you you want individual register? associatio prints on others to you wish ledge and use in th modern d our local place you most, ren in nation coming m Then join But so your asse the best grain?" to the g have to an attem topia, a midway This is ed the ri You hav stop pre world co of the th the expe country ate in. that, but