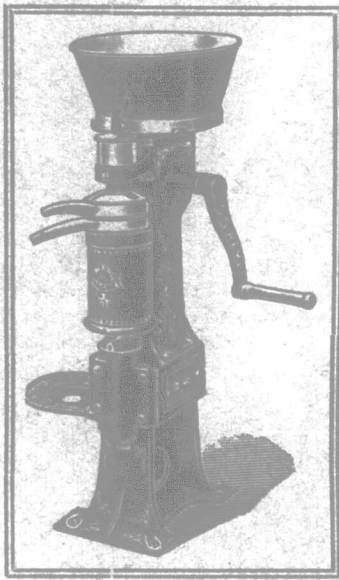


It Is Too Late



It is too late to look into the construction of a Cream Separator after you have bought it.

Be warned in time not to buy a poorly-constructed worm-gear separator, because you are sure to be disappointed.

We ask you to examine the square or common-sense gear cut out of solid blanks, used in the MAGNET Cream Separator; mark how much better it is suited to a machine which requires to run 7,000 revolutions per minute, and do that twice every day in your dairy.

Examine the double support to the bowl in the MAGNET, as compared to the support at one end only in all the others.

Try the MAGNET against all others for skimming.

Try the MAGNET for easy turning. Examine closely its perfect ball race, and also figure out the difference in cleaning the MAGNET with its one-piece skimmer—less than 5 minutes, as against 20 minutes in many of the others, a saving of 18 days' work each year.

Examine the MAGNET'S general construction, it is built strong and rigid, and will do good work any place you set it, whether level or not; no kit of tools required, only a small wrench.

Our motto: "DO NOT SACRIFICE QUALITY TO PRICE," there are many lower priced machines on the market, but they are not as good. The MAGNET is 50 years away from the scrap heap.

It will cost you one cent to try the MAGNET in your dairy; drop us the card.

THE PETRIE MFG. CO., LIMITED

HEAD OFFICE AND FACTORY:
HAMILTON, ONTARIO, CANADA.

Branches: Winnipeg, Man.; St. John, N. B.; Regina, Sask.; Vancouver, B. C.;
Calgary, Alta.; Montreal, Que.

NO DUST

WHEN YOU SHAKE A "PEASE" FURNACE

ALWAYS INSTAL A
PEASE
"ECONOMY"
FURNACE

That is another strong point about a "Pease." There is absolutely no dirt—none in the cellar when you shake it, because the large dust fine takes it up into the Combustion Chamber. None in the air reservoir—because all horizontal joints are "cup" joints, and the cement lies in the "cup"—so the cement cannot fall away, all perpendicular joints are rivetted steel plates.

If you are building, or your present heat is not satisfactory—write us. All we want is a chance to tell you about our furnace—and leave the judgment to you.

Write To-day for Catalogue.

PEASE FOUNDRY CO., LIMITED, TORONTO AND WINNIPEG
Manufacturers Boilers, Furnaces, Combination Heaters, Etc. 1530

F.C.S. College

This school offers exceptional advantages to young people desiring a practical education.

Trained specialists direct the work.

Independent board examines for graduation certificate.

Students assisted to positions.

Special short courses for any not desiring to graduate.

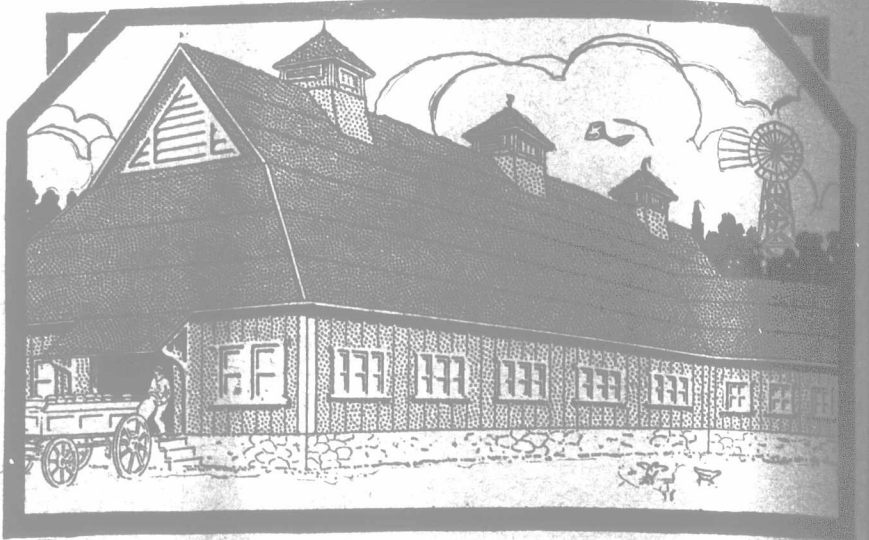
Send for "Two Ways of Binding," it explains our work.

Forest City Business and Shorthand College

LONDON, ONTARIO.

J. W. Westervelt,
Principal.

J. W. Westervelt, Jr., Chartered Accountant,
Vice-Principal.



Put on a Complete Roof

The bare fact that you put a roof on a building means that you want the contents of that building protected. But if you put on a poor roofing you get only half protection. It costs very little more to put on the best roofing and get full protection.

REX FLINTKOTE ROOFING

is the only roofing that gives full, lasting protection. REX protects not only against rains and snows, but against heat, cold and damp, and against the danger of fire communication by falling sparks and firebrands. REX Flintkote ROOFING is absolutely water-proof, fire-resisting, a non-conductor of heat and cold, and an impervious barrier to dampness. REX is made to last; imitations merely coated to look like REX do not give REX service. To get a roof that will give the all-round protection required by farm buildings, look for the boy trade-mark and get the genuine REX Flintkote ROOFING.

We Will Send You Samples to Test

together with our valuable roofing booklet, on receipt of postal request. Our complete book, "Making Poultry Pay," will be sent for 4 cents in stamps for postage and packing—very useful to the poultry raiser.

J. A. & W. BIRD & CO.
20 India Street, Boston, Mass.

Canadian Office: 29 Common Street, Montreal.



We Supply These
Made of Steel

SILOS

Easy to Erect, Durable,
Cheap

Watrous Engine Works Co., Limited,
London, Ont.