

The Canadian Bridge Co., Limited

Manufacturers

WALKERVILLE, ONT.

Locomotive Turn Tables,
Roofs, Steel Buildings and
Structural Iron Work of all descriptions

RAILWAY AND HIGHWAY BRIDGES

Wood Fibre ^{HARD} WALL ^{WALL} Plaster

White Rock (Hydrated) Lime

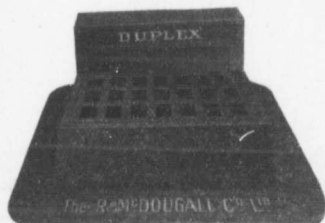
MANUFACTURED BY

THE IMPERIAL PLASTER CO., Limited

Dealers in Cement, Lime, Fire Brick, Fire Clay, Plaster Paris.

King St. (West of Subway) TORONTO

OUR DUPLEX CATCH BASIN



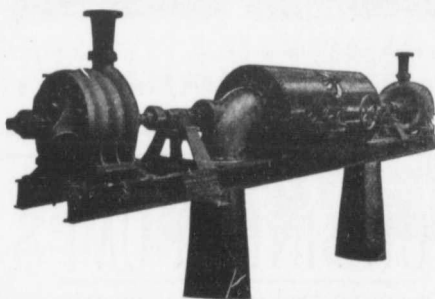
has been recommended by eminent Engineers as the
.. Most Convenient for Cutter Work ..
Can be adjusted to different heights and is easily placed.

—We also Make—

Manhole Covers and Frames
Hydrants and General Castings

The R. McDOUGALL COMPANY, Limited, . . . GALT, CANADA

PUMPS FOR WATER WORKS



Two Worthington 3-Stage Turbine and McCormack Water Wheels, built for Port Arthur, Ont., Water Works, 1440 gal. per minute against 350 ft. head.

WATER WORKS SYSTEMS INSTALLED

Boilers, (Return Tube and Water Tube,) Tanks, Penstocks,
Mill Machinery.

Builders in Canada of

"WORTHINGTON" TURBINE PUMPS

The John McDougall Caledonian Iron Works Co., Limited.

Estimates Cheerfully Furnished

HEAD OFFICE AND WORKS: Montreal.

DISTRICT OFFICES:

MONTREAL, 82 Sovereign Bank Building.

TORONTO, 810 Traders Bank Building.

WINNIPEG, 251 Notre Dame Avenue

VANCOUVER, 416 Seymour Street.

NELSON, Josephine Street.

NEW GLASGOW, N.S., Telephone Building.