

National Directory of Standard Products

THIS directory includes the names of leading Canadian firms making and handling the various classes of goods indicated. Buyers unable to find the desired information in this directory are invited to write to this office for information, which will be furnished free of charge.

- APPLES, (Evaporated):**
Graham Co. Limited, Belleville, Ont.
- BABBITT AND SOLDER.**
Hoyt Metal Co., Toronto.
- BRICKS AND TERRA COTTA.**
Don Valley Brick Works, Toronto.
- CARPETS AND RUGS.**
Toronto Carpet Mfg. Co., Ltd., Toronto.
- CAR WHEELS AND CASTINGS.**
Dominion Wheel & Foundries, Limited, Toronto.
- CIGARS.**
Andrew Wilson & Co., "Bachelor" Cigars, Toronto.
- ELEVATORS.**
Otis-Fenson Elevator Co., Toronto.
- GLOVES AND MITTS.**
The Craig-Cowan Company, Limited, Toronto.
- HARDWARE.**
Hardware Company of Toronto, Limited, Toronto.
- PAINTS AND VARNISHES.**
International Varnish Co., Limited, Toronto.
- PIANOS & PLAYER PIANOS**
Heintzman & Co., "Ye Olde Firm," Toronto.
- PRINTING INKS.**
Sinclair Valentine Co. of Canada, Limited, Toronto.
Eureka Refrigerator Co., Limited, Toronto.
- REFRIGERATORS:**
Eureka Refrigerator Co., Limited, Toronto.
- SCRAP IRON, STEEL & METALS.**
Frankel Bros., Toronto.
- TINWARE & SHEET METAL WORK.**
Soren Bros., Manufacturers, Toronto, Ont.
- UNIFORMS.**
Beauchamp & How, Limited, Toronto.
- VEGETABLES, (Desiccated):**
Graham Co., Limited, Belleville, Ont.
- WASHING MACHINES.**
Nineteen Hundred Washer Company, Toronto.
- WATCH CASES.**
American Watch Case Co., Limited, Toronto.

THE INDIAN DRUM

(Continued from page 27.)

maid; within, and bending over the table with the radio instrument, was the operator with the second officer beside him. The violet spark was rasping, and the operator, his receivers strapped over his ears, strained to listen. He got no reply, evidently, and he struck his key again; now, as he listened, he wrote slowly on a pad.

"You got 'em?" some one cried. "You got 'em now?"

The operator continued to write; the second mate, reading, shook his head, "It's only the Richardson again."

"What is it?" Alan asked the officer.

"The Richardson heard four blasts of a steam whistle about an hour ago when she was opposite the Manitou.

She answered with the whistle and turned toward the blasts. She couldn't find any ship." The officer's reply was interrupted by some of the others. "Then . . . that was a few minutes ago . . . they heard the four long again. . . . They'd tried to pick up the other ship with radio before.

. . . Yes; we got that here. . . . Tried again and got no answer. . . . But they heard the blasts for half an hour. . . . They said they seemed to be almost beside the ship once. . . . But they didn't see anything. Then the blasts stopped . . . sudden, cut off short in the middle as though something happened. . . . She was blowing distress all right. . . . The Richardson's searching again now. . . . Yes, she's searching for boats."

"Any one else answered?" Alan asked.

"Shore stations on both sides."

"Do they know what ship it is?"

"No."

"What ship might be there now?"

"Shore stations on both sides."

"Do they know what ship it is?"

"No."

"What ship might be there now?"

"Shore stations on both sides."

"Do they know what ship it is?"

"No."

"What ship might be there now?"

"Shore stations on both sides."

"Do they know what ship it is?"

"No."

"What ship might be there now?"

"Shore stations on both sides."

"Do they know what ship it is?"

"No."

the steel hull and the roll and pitching of the vessel, which set the table with its dishes swaying, showed that the sea was still increasing, and also that they were now meeting heavier ice. At the table men computed that Number 25 had now made some twenty miles north off its course, and must therefore be approaching the neighborhood where the distress signals had been heard; they speculated uselessly as to what ship could have been in that part of the lake and made the signals. Old Burr took no part in this conversation, but listened to it with frightened eyes, and presently got up and went away, leaving his coffee unfinished.

Number 25 was blowing its steam whistle again at the end of every minute.

(To be continued.)



NOTES AND NEWS.

The Gambit Tournament of the Toronto Chess Club has fallen to the President, Mr. Malcolm Sim, with a score of 5 wins, a draw and a loss. Mr. Sim carried the last tourney held season 1915-1916.

We deeply regret to report that Mr. M. J. Adams, a veteran member of the Toronto Chess Club, recently passed away at the age of 64.

There are fifteen entrants in the Second Annual Canadian Correspondence Chess Tourney. They are playing in three sections. The entries in one section are: W. J. Barker, Victoria, B. C.; Rev. J. Leech-Porter, Greenfell, Sask.; R. W. Worsley, Yorkton, Sask.; Dr. W. K. Merrifield, Ridgetown, Ont., and M. Sim, Toronto. The other section entries will appear later.

The return match between the Hamilton and Toronto Chess Clubs was played in Hamilton on Saturday. The result was in favor of Hamilton by the score of 7 to 5.

Hamilton	Toronto
1. S. E. Gale . . . 0	J. S. Morrison . . 1
2. J. E. Lister. ½	H. J. Lane . . . ½
3. J. J. Corke. ½	R. G. Hunter . . . ½
4. H. G. Guvin. 0	W. H. Perry . . . 1
5. H. N. Kittson 1	W. Cawkell . . . 0
6. E. Hogben . 1	E. Willans . . . 0
7. C. N. Ritchie. 1	G. K. Powell . . . 0
8. W. F. Moore. 1	D. J. McKinnon. 0
9. G. W. Ritchie ½	W. J. Faulkner. ½
10. W. K. Foucar 0	C. Ferrier 1
11. J. W. Kells. ½	T. Crossley . . . ½
12. F. R. Adelhelm 1	K. B. O'Brian. . . 0
Total 7	Total 5

S. F. Shenstone Shield.

After the match the Toronto players were entertained by the Hamilton Club at the Red Cross Cafe.

The president of the Toronto Chess League, Mr. R. G. Hunter, generously offered to donate a shield for inter-city competition in future matches. The offer was accepted on behalf of the Hamilton Club by President Jas. Ruben, and Vice-President D. J. McKinnon, of the Toronto Chess Club, spoke on behalf of Toronto.

The trophy to be known as the "S. F. Shenstone Shield," to perpetuate the memory of the late S. F. Shenstone, a well known chess player, connected with both the Hamilton and Toronto Chess Clubs prior to his death two years ago.

A correspondence match between Montreal and Toronto Chess Clubs is the likely outcome of the former's challenge to a telegraphic match.

The Toronto membership of the Good Companions' Chess Problem Club is becoming a considerable factor, due to the interest and energy of Mr. John C. Gardner. It includes Messrs. J. C. Gardner, W. J. Faulkner, H. G. Martin, H. J. Fairhead, E. J. Farmer, J. Neild, M. Sim, and Miss E. Collins.

Mr. W. H. Ferguson, of the Parliament Club, and M. Sim, are playing a match of two games by telephone.

TORONTO LADIES' CHAMPIONSHIP.

Miss Florence E. Spragge successfully defended her title as Lady Champion of Toronto in the yearly tournament just concluded, and we offer her our congratulations. Miss Elsie Banks (who tied for first place in the contest of last season,

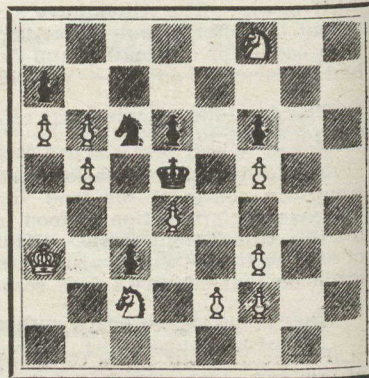
but lost the tie match), secured second place. The following is the table:—

	Won.	Lost.	Drawn.
Miss F. E. Spragge . . .	8	2	0
Miss E. Banks	7	3	0
Miss A. L. Sanderson . .	6	4	0
Mrs. A. Spragge	5	5	0
Miss H. Banks	4	6	0
Mrs. Chown	0	10	0

Mrs. Chown contested only a few games when she was compelled to retire from the tournament.

PROBLEM NO. 178, by F. af Geijerstam. (1890.)

From "The White Knights," 1917. Black.—Six Pieces.



White.—Eleven Pieces.

White to play and mate in three.

Problem No. 179, by J. J. O'Keefe and N. S. Smith.

White: K at KKt8; Q at QB8; Rs at QKt8 and Kt5; Bs at QR8 and K4; Kts at QB2 and Q3. Black: K at QB5; Q at QR2; B at QKt4; Kts at QR7 and QB3; P at KB2. Mate in two.

Problem No. 175, by G. W. Chandler and Comins Mansfield.

1. Q—K7, B—Kt5; 2. Kt—Q6, mate. 1., B—R6; 2. P—Kt4, mate. 1., B—Kt3; 2. Q—B6, mate. 1., threat; 2. Kt—Q7, mate. The Black Queen is responsible for three variations.

No. 176. (Key, 1. R—Q3) No. 177. (Key, 1. Kt (B3)—Q4.) The last is cooked by 1. R—Kt6ch. Mr. J. V. Savage, Acton West, sends a solution to Mr. McGregor's No. 173, a cook by 1. B—K4ch. Moving the White Monarch to KBsq will remedy the evil.

Correct solution of No. 174, was received from J. McGregor, Tamworth.

CHESS IN TORONTO.

A lively game played in the Gambit Tournament at the Toronto Chess Club between Messrs. J. Boas and M. Sim.

Kieseritzky Gambit.

White.	Black.
M. Sim.	J. Boas.
1. P—K4	1. P—K4
2. P—KB4	2. Pxp
3. Kt—KB3	3. P—KKt4
4. P—KR4	4. P—Kt5
5. Kt—K5	5. B—Kt2
6. P—Q4	6. P—Q3
7. KtxKtP	7. BxKt
8. QxB	8. BxP
9. B—QB4 (a)	9. Kt—Q2
10. QxP	10. Kt—K4 (b)
11. B—Kt3	11. Kt—K2
12. R—Bsq	12. P—Q4 (c)
13. Pxp (d)	13. P—QB4
14. Pxp e.p.	14. P—B3
15. Pxp (e)	15. R—QKt8q
16. B—R4ch (f)	16. Kt (K4)—B3
17. BxKtch	17. KtxB
18. Q—K4ch	18. Kt—K4
19. P—B3	19. B—Kt3
20. B—Kt5	20. Q—Q6 (g)
21. Q—KB4	21. Kt—Kt4 (h)
22. QxP	22. Kt—Q6ch
23. K—Qsq (i)	23. KtxPeh
24. K—B2	24. Q—K7ch
25. Kt—Q2	25. K—Q2 (j)
26. Q—B7ch (k)	26. K—B3
27. R—B6ch	27. K—Kt4
28. Q—Kt3ch	28. K—R3
29. KxKt	29. KxP
30. R—B7ch	30. K—Bsq (l)
31. Q—Q5	31. B—K6 dis. ch
32. K—B2	Resigns (m)

(a) The book continuation is 9. QxP. (b) 10. . . . Q—B3 would have been sounder play.

(c) This is, of course, distinctly unfavorable. He might as well have played P—KB3 at once.

(d) P—B3 here, or on the next, would lose the Queen.

(e) If 15. QxP, then also 15. . . . Kt—Q6ch.

(f) This is the best method of continuing the attack, and provided for the safety of his own exposed monarch.

(g) He should have Castled, incidentally preventing 21. QxKt. If White plays instead 21. Rxp, then 21. . . . RxR; 22. QxKt, R—B8ch; 23. KxR, Q—Q8ch; 24. Q—Ksq, R—Kbsq ch and mates next move.

(h) There is no hope after this. The last chance was to castle.

(i) K—Q2 is also good.

(j) White threatened mate in two moves.

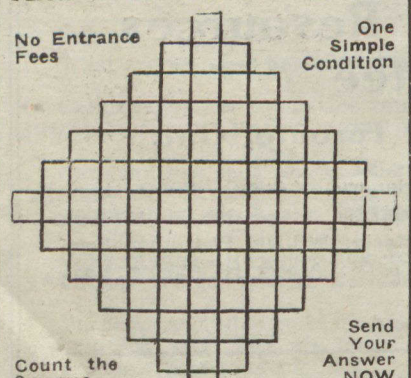
(k) 26. QR—Ksq would have finished off hand, but White was loth to bring further material into action.

(l) If K—Rsq White mates in two. If K—R3, then 31. K—B2.

(m) A timely resignation.

FOUND AT LAST!! **FORD STARTER**
WRITE US FOR PARTICULARS. UNBREAKABLE
\$22.50 THE MORGAN SALES CO. TORONTO

Solve this Puzzle And Win a Phonograph



Count the squares. Send Your Answer NOW

A Real Phonograph will be given to every person who counts the number of squares in this diagram CORRECTLY and fulfils one simple condition. This condition is easy. Count the squares very carefully and send your answer to
SELFAST SPECIALTY CO.
Dept. H, Drawer 891, Sta. F., TORONTO