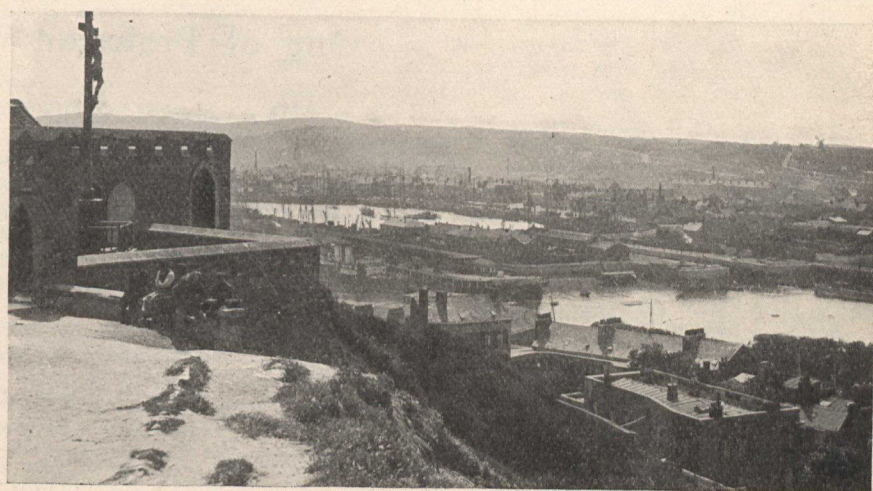


At Boulogne-sur-Mer, the Greatest Fishing Port in France



The Marguet Bridge and the Quays at Boulogne.

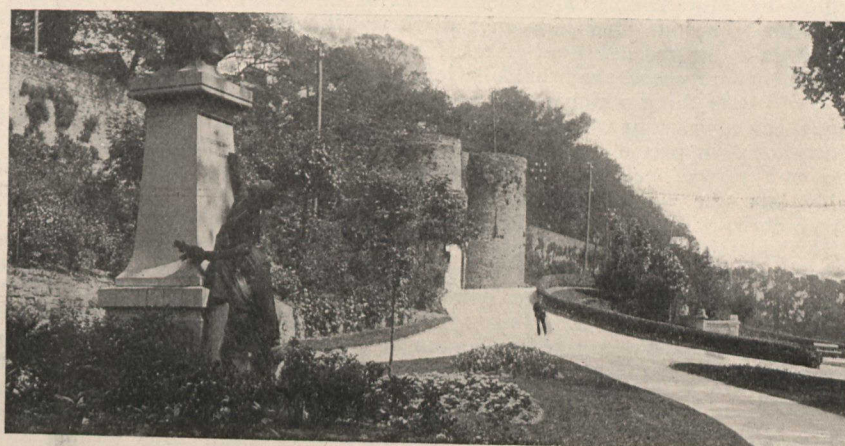


Panoramic View of Boulogne from the Height where the "Calvary" is Erected.

GENERAL VIEWS OF THE PORT



Type of Sturdy Sailor.



The Monument of Duchenne.



Arrival of Fish at the Exchange.



Type of Fisherman.

STALWART TYPES AND PICTURESQUE SCENES ASSOCIATED WITH THE LEADING INDUSTRY



Fisherwomen in Professional Garb.



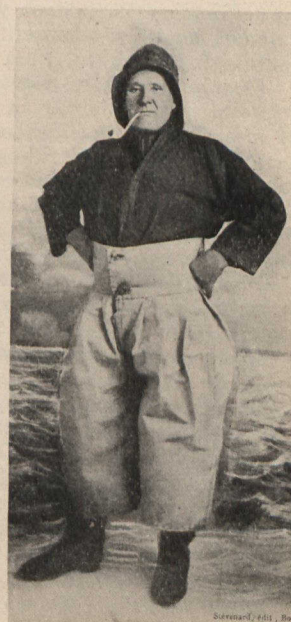
A Sea-Wolf.



Rue du Machicoulis.



A Hardy "Daughter of the Sea."



A Jolly Fisher Lad.