

THE SCHOOL BOY.

We bought him a box for his books and things, And a cricket bag for his bat;

We handed him into the railway train, With a troop of his young comrades,

We looked in his innocent face to see The sign of a sorrowful heart;

'Twas not that he loved not us heretofore, For the boy was tender and kind;

'Twas not his fluttering heart was cold, For the child was loyal and true;

And we came to know that love is a flower Which only growtheth down;

EUROPEAN SCANDAL.

FROM MONACO TO MADNESS.

The following painful story is taken from the Whitehall Review.

The Baron—, an Austrian, belonging by his high birth to the most aristocratic society of the Empire, deputy and member of the House of Lords, husband of a woman his equal in rank, and father of two grown-up sons and two daughters, betook himself in an evil hour to Monte Carlo, to pass a few weeks of leisure.

with feverish anxiety over the board to watch the fate of each five-franc piece, and hardly able to restrain his tears as he saw it swept away.

Even the gainers by his folly and his misfortunes wearied of him. When its victim can only lose such pitiful sums as he now brought to the tables, the triplet ceases to be interested in them, and commences to count the cost of their maintenance.

A vote of thanks was unanimously passed to Mr. Chatfield for his generous gift to the club of the medal which Dr. Hurlbert won.

He had not the means to undertake a journey, but the triplet—always thoughtful under similar circumstances—was not niggardly now.

OUR CHESS COLUMN.

All communications intended for this Column should be addressed to the Chess Editor, CANADIAN ILLUSTRATED NEWS, Montreal.

The chess season just past has been a creditable one for Canada, and has exhibited a degree of activity on the part of most of the clubs which gives a good promise for the future.

Club is managed by those who know well what is necessary in order to maintain a healthy spirit among its members.

THE OTTAWA CHESS CLUB.

Last week the Ottawa Chess Club brought to a conclusion a very pleasant and successful season, anticipating a pleasant reunion when the present warm weather should be over.

During the season a tourney took place in which the following members participated:—Messrs Halkett, Hawser, Hurlbert, Jarvis, Leggatt, May, Martin, Moodie, Morgan, Musgrove, Ritchie, Spittal, G. H. Taylor, W. Taylor, Larose and Burrill.

The winner of the silver medal was Dr. Hurlbert, who won every rubber he contested and is admitted the best player in the club by those who took part in the contests.

The second prize was taken by Mr. Larose, the present vice-president of the club, and the third by Mr. Moodie, now one of the committee of management.

A vote of thanks was unanimously passed to Mr. Chatfield for his generous gift to the club of the medal which Dr. Hurlbert won.

At the Montreal Chess and Checker Club Room, No. 105 St. James street, on Thursday evening last, Mr. J. G. Ascher gave an exhibition of simultaneous chess playing.

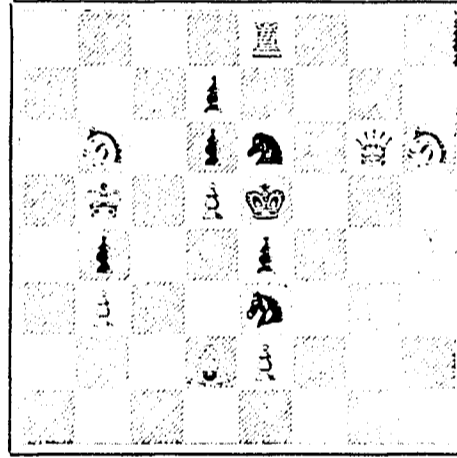
The following respecting the Tournament at Vienna appeared in the Toronto Globe of May 22.

VIENNA GAMES.—Vienna, May 20.—In the chess tournament here Mackenzie and Mason, Americans, had a drawn game. The score of the former at present is slightly the best.

VIENNA TOURNAMENT.—Vienna, May 21.—At the close of the ninth day of the International Chess Tournament Blackburne, Mackenzie and Winawer led with seven games each.

PROBLEM No. 384.

By J. P. Taylor. BLACK.



WHITE.

White to play and mate in two moves.

SOLUTION OF PROBLEM No. 381.

- White. 1. K to K7. 2. Mate acc. Black. 1. Any

GAME 510th.

CHESS IN RUSSIA.

Game played in December last at St. Petersburg between M. Mich. Tchigorine, the Russian champion, and M. Sakoulovitch.

Evans Gambit.

- White.—(Mr. T.) 1. P to K4. 2. Kt to K B 3. 3. B to B 4. 4. P to Q K 4. 5. P to Q B 3. 6. P to Q 4. 7. Castles. 8. P takes P. 9. Kt to Q B 3. 10. B to K K 7. 11. B to B 4. 12. Q to R 4. 13. Q takes Kt. 14. Kt to Q 5. 15. Q to R 4. 16. Q to R 3. 17. K R to K. 18. Kt takes B. 19. P to K 5. 20. Kt to K 5. 21. Kt takes B. 22. P takes P. 23. Q to B 4. 24. Kt to B 5. Black.—(Mr. S.) 1. P to K 4. 2. Kt to Q B 3. 3. B to B 4. 4. B takes P. 5. B to B 4. 6. P takes P. 7. P to Q 3. 8. B to Kt 3. 9. Kt to R 4. 10. P to K R 3. 11. Kt takes B. 12. Q to Q 2. 13. Q to B 2. 14. B to K 3. 15. B to Q 2. 16. R to Q B. 17. B to K 3. 18. R P takes Kt. 19. B P takes P. 20. Q takes B. 21. Q to R 3. 22. P to Q 4. 23. K to Q 2. 24. Resigns.

NOTES.

- (a) This is the best continuation. (b) This ingenious attack was first suggested by the late Prof. Goring, and was thoroughly analyzed by Herr Minckwitz in the Schachzeitung, 1871, page 33. (c) The best move, and one which, if properly followed up, gives Black a sure advantage. c. g. :

- White. 10. ... 11. B to R 4. 12. Q to R 4. 13. Q takes Kt. 14. Kt to Q 5. 15. P to K 5. 16. P takes B P. Black. 10. P to K B 3. 11. Kt takes B. 12. Q to Q 2. 13. Q to B 2. 14. Kt to R 3. 15. Castles. 16. B to K 3. He cannot take P, because of 17. B takes P, for 17. B to K 3, White replies 18. Kt to Kt 5, &c. 17. Q takes Kt. 18. B takes Q. 19. B takes Q. and Black wins another P. Having for the exchange two passed P., supported by B., Black's game is to be preferred. Instead of 10. P to B 3, Black had two other lines of play, 10. Q to Q 2 and 10. Kt to Q 2, neither of which is as good as P to B 3. c. g. 10. Q to Q 2; 11. B to Q 3; 12. B to R 4; Kt to K 2; 13. P to K 5; B P takes P; 14. P takes B, castles, &c., and Black's position is satisfactory. 10. Kt to K 2 would lead to a draw (see "La Strategie," 1874, p. 15). (d) Though B to R 3 is probably better, this move is worthy of more attention and analysis than it has yet had. It is troublesome to Black, hinders his development, and threatens to win the Q P in many variations. (e) In this position, the capture of the P is feeble. Black cannot avoid the loss of a P. He should have played 11. B to K K 5; 12. B to Q 3. 13. Q to Q 2, and if White plays 13. P to K 5, Q P takes P; 14. P takes P, castles Q R, and Black saves his P and protects his defence; if 13. B to Q, Kt 5, P to Q 3; 14. B to K 2, castles Q R or Kt to K 2, &c. (f) Black's game is already precarious. If he had played 14. P to B 3, White recovers his P with the better game by 15. Kt takes B. (g) 15. Q to Q 2 loses a P—c. g. 16. Kt takes B, B P takes Kt; 17. Q to K 3, &c. (h) Threatening the B. (i) 17. Kt to K 2 is better, but would not save the game. (j) If 20. Q to K 3; 21. Kt takes B, Q takes Kt; 22. B takes P. (k) If 21. Q to B 3; 22. P takes P, P takes P; 23. Q to Q B 3, and Black's game is really compromised, for if he pushes K P, 24. Kt takes B P, &c. (l) It is easy to see that Black's game is irretrievably lost, but this note only hastens the catastrophe. (m) For if P takes Kt 5, P to K 6, Q takes P; 26. Q takes P, and wins the Q. (M. de Bezkrowney in "La Strategie.")

MURRAY CANAL.

NOTICE TO CONTRACTORS.

SEALED TENDERS, addressed to the undersigned, and endorsed "Tender for the MURRAY CANAL," will be received at this office until the arrival of the Eastern and Western mails on TUESDAY, the twenty-seventh day of June next, for the formation of a Canal to connect the head waters of the Bay of Quinte with Prescott Harbour, Lake Ontario.

TRENT NAVIGATION.

NOTICE TO CONTRACTORS.

SEALED TENDERS addressed to the undersigned and endorsed "Tender for Trent Navigation," will be received at this office until the arrival of the Eastern and Western mails, on WEDNESDAY, the Fifth Day of July next, for the construction of two Lift Locks, Bridge Piers and other works at Fenelon Falls, also the construction of a Lock at Buckhorn Rapids, and for the construction of three Locks, a Dam and Bridge Piers at Burleigh Falls.

Cadbury's COCOA ESSENCE. PURE, SOLUBLE, REFRESHING.

It is often asked, "Why does my doctor recommend Cadbury's Cocoa Essence?" The reason is that being absolutely genuine, and concentrated by the removal of the superfluous fat, it contains FOUR TIMES the AMOUNT OF NITROGENOUS or FLESH-FORMING CONSTITUENTS of the average of other Cocoas which are mixed with sugar and starch.