

**M^CARTHUR,
 CORNEILLE & CO.**
 310 to 316 ST. PAUL ST.
 MONTREAL

**OILS, CHEMICALS, DYESTUFFS
 AND
 TANNING EXTRACTS**

*Waxes, Gums, Shellacs,
 Glues, Gelatines, Etc.*

**CANADIAN AGENTS
 FOR THE
 BERLIN ANILINE CO.
 BRITISH ALIZARINE CO. and
 MILLER'S TANNING EXTRACT CO.**

**THE BOILER INSPECTION
 and INSURANCE CO. of CANADA**

**CANADA LIFE BUILDING
 TORONTO**

Thirty Years' Experience as Consulting Engineers

Hull, Canada, 3rd November, 1905.
**THE BOILER INSPECTION & INSURANCE CO.
 OF CANADA, Toronto.**

Dear Sirs:—

We take pleasure in certifying that the engineering services rendered with the Policy of Boiler Insurance carried by your Company on about 30 boilers in the Eddy Company's plant is a paying investment, as the service given is of the highest order and results in great saving and a security against accident by explosion; in short, this service has given us the very best satisfaction.

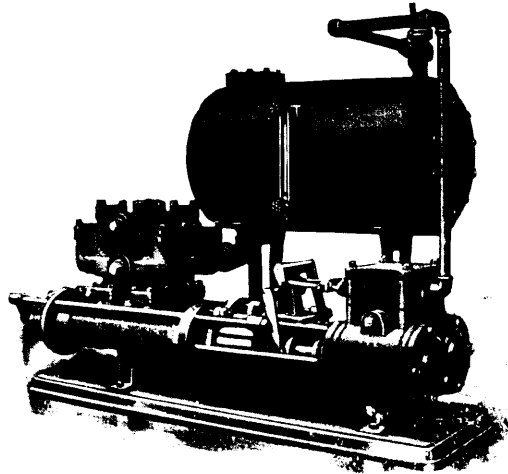
Yours truly,
THE E. B. EDDY CO., LIMITED
 By **GEO. H. MILLEN,**
 Superintendent.

**Malleable
 Iron
 Castings**

CAPACITY 4,000 TONS

**McKinnon Dash &
 Metal Works Co.,
 LIMITED**
 ST. CATHARINES, - ONT.

**Cranes
 Pumps
 Condensers
 Etc.**



**The Smart-Turner
 Machine Co.,
 Limited**
 Hamilton, - Ontario

The Hamilton Facing Mill Co., Limited, Foundry Facings
 HAMILTON, ONT. Manufacturers of
Ceylon Plumbago SUPPLIES
 and
**FIRE BRICK, FIRE CLAY
 and FIRE SAND,**
 also Extra Fine Quality
MOULDING SAND
 from the finest Brass
 Sand to the coarsest
 Pipe and Core Sand.
 WRITE FOR PRICES.

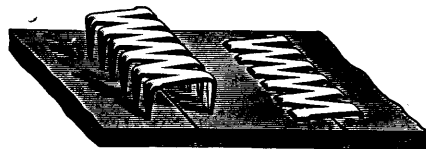
For The Best Castings.

**"CARRON"
 PIG IRON**

All Strengths for any
 Purpose

**A. C. LESLIE & CO., LIMITED
 MONTREAL**

BRISTOL'S



STEEL BELT LACING

**MOST MODERN AND APPROVED FOR
 ALL KINDS OF BELTS**

Greatest Strength with Least Material

EASILY APPLIED and LOW IN PRICE

Saves Time, Saves Belts, Saves Money

**SAMPLES SENT FREE
 SEND FOR CIRCULAR G**

THE BRISTOL CO.

WATERBURY, CONN., U.S.A.
 NEW YORK—114 Liberty St.
 CHICAGO—753 Monadnock Bldg.
 LONDON—23 College Hill.

**Smith's Falls Malleable
 Castings Company, Limited**

CAPACITY 4,000 TONS

MANUFACTURERS

OF

**MALLEABLE
 IRON
 CASTINGS**

Smith's Falls, Ont., Can.

PATENTS

Fetherstonhaugh & Co.

Head Office TORONTO Montreal, Ottawa, Winnipeg