

## Chips.

A THOUSAND cords of poplar are being gotten out at St. Ignace for a Niagara Falls paper company.

THE last timber raft of the season left Ottawa for Quebec on Sept. 18th. It contained 183 cribs, and is owned by Mr. O. Latour.

A FEW days since a crew of fifty men was sent by J. A. Pearson & Son, from Saginaw, Mich., into the upper peninsula, the intention being to put in about 35,000,000 feet this winter.

THE Duluth Lake Superior News says:—It is said that there will be 1,000 men at work in the North Shore pine woods this winter. Already the lumbermen are beginning their preparations for the fall and winter logging.

THE *Muskegon Herald* says that Messrs. Laseell & Jones have taken a large contract from the British American Lumber Company, which will occupy about three years before it is completed. It is estimated that there will be 20,000,000 feet in the limit.

THE *Muskegon Herald* says.—The lumber arms are vigorously prosecuting the work of preparing for the seasons cut, which promises to be even larger than that of last winter. A number of camps have already been started, and more are being equipped every day.

During the past year the Tennants, of Toronto, shipped 3,000,000 feet of lumber to Manitoba, and expect to forward 2,000,000 feet more. Nearly a million feet went by way of Chicago, but the larger portion was shipped by the Lake Superior and Duluth route.

THE *Monetary Times* says that at Lancaster, N. B., a woodenware factory has been put into operation by Mr. D. L. Richards, who is assisted by Mr. J. V. Thurgar of St. John. The woods used in the factory are mahogany, black walnut, white wood, cherry, ash and birch.

THE Northwestern Lumber Company, of Eau Claire, Wis., is piling lumber at the rate of 100,000 feet per day, one river crew being retained to run a part of the product to the Hannibal, Mo., yards. More side-tracks have been put in, and the company has on hand logs enough to run till a freeze up.

L. B. HODGES, who has charge of the tree planting interests of the Northern Pacific Railway Company, has gone to Dakota to resume operations for fall planting. He proposes to plant out, before winter closes in, 2,000,000 trees. Those hitherto planted passed through the hot season without serious loss.

FIVE Menominee river companies have decided to cut a wagon road along the Michigamme at once, the intention being to cut some 30,000,000 feet of logs on that stream this winter, and camps are now being located. This is the section which was damaged by fire some time ago, and the timber will be put in as rapidly as possible.

THE Cincinnati *Commercial* tells a big story of a big walnut tree. In 1864 an Indiana man as the story runs, bought the tree for one dollar and subsequently sold it for sixty-five dollars. The buyer sold it to a Cincinnati lumber dealer for \$700; the Cincinnati dealer sold it to a New Yorker for \$2,200, and he cut it up into veneering which he sold for \$10,000.

THE Kingston *British Whig* of Sept. 16th says.—The steamer Chieftain, on Thursday, was lying with a Port Hope raft off Nicholson's Island. The wind, veering around from the south to west, broke up the latter, and the timber drifted to the shore near Wellington. It can be recovered. Mr. W. McRossie had a raft of oak and pine broken up in the harbour by the gale. He will probably secure all the pine, but will lose some of the oak.

THE Ottawa *Citizen* says:—The Canadian Pacific Railway Company have made arrangements to run a mixed train for the special accommodation of lumbermen every Tuesday and Friday to Mattawa. It is highly pleasing to see the company using their utmost endeavours to meet with the requirements of the general public in every possible way, and this latest improvement will be a decided acquisition in supplying a want felt by the many lumbermen in Ottawa and vicinity.

THE Midland, Ont., *Free Press* says:—Our esteemed neighbour, Mr. W. Lummis, of Wyo Mills, has decided not to confine himself solely to the manufacture and sale of lumber at his own mills, but enters the field as a dealer, having purchased an excellent little stock of J. & F. N. Tennant, of Toronto, and cut at Haddens mill, Foxmead. More power to his elbow.

THE Thunder Bay *Sentinel*, of Sept. 11th, says:—The Government Dock presented quite an animated appearance to-day. The steam barge Georgian arrived with a cargo of no less than 260,000 feet of lumber and shingles for Messrs. Graham and Horne, and a large raft of lumber of Mr. Carpenters was at the same time being unloaded which arrived this morning from Carp River.

THE Ottawa correspondent of the *Globe* says. A valuable farm and timber limits on Lake Temiscamingue, Montreal, and Wapascott rivers was offered at auction on Tuesday afternoon, Sept. 19th. The licenses are 223, 221, and 225, of 1881, two comprising 104 square miles. The property was started at \$21,000, and withdrawn at \$41,000, the amount not having reached the upset price.

THE Montreal *Post* says.—Mr. Wm Little has been requested by several members of the American Forestry Congress to call a meeting of those who take an interest in the preservation of forests or planting of forest trees, to be held at Forestry Hall, 132 St. James Street Montreal on Wednesday, the 20th September, at 8 o'clock p.m. It is proposed to consider the practicability of establishing a provincial or Canadian association for the promotion of forestry interests.

A LARGE amount of lumber, largely white birch, is manufactured between Canton and Livermore, Mo. At Canton Point, H. G. Thayer employs 20 hands in his saw mill and shoo shop, and two miles from that point a similar establishment is run by Melvin Guff, who employs the same number of men. At Jay Bridge, Richmond & Thompson employ 50 hands in a turned wood box factory. They have a pay roll of \$1,000 a month, and ship goods at the rate of \$4,000 per month.

A correspondent of the Ottawa *Free Press*, says:—Mattawa is at present excited over the prospect of having two extensive saw mills built here by two of the leading lumbering firms of the Ottawa Valley, and it is no doubt a fine location for milling purposes. This is going to be an important place. Eight miles from here on the line of the C. P. R., near the confluence of Amable du Fond and Mattawa, Mr. Wm. Mackie, of Ottawa, is putting up a fine saw mill on the finest mill spot in the Dominion, and Mr. Jas. Bonfield, M. P. P., has just started a new mill at the same place.

THE Belleville *Ontario* says:—The steamer Chieftain left Port Hope on Wednesday afternoon with a raft belonging to Messrs. Smith McDougall & Son, of that town, and containing five drams of oak and other timber. When between Nicholson's Island and Long Point the wind had a full sweep at the raft, and the result was that the fastenings parted and the sticks were in a few minutes scattered all over the lake. The raft, which was worth \$100,000 was not insured, and is therefore a total loss. Of course some of the timber will be recovered, but it would cost almost as much as the timber is worth to collect it. The mishap is a very serious one.

THE Farry Sound *Star* says.—The Messrs. Armstrong, of McKellar, have already three camps started, and intend to start five others soon. Active preparations are being made by all the lumber companies for the winter work. Supplies are being shipped and camps established. The P. S. L. Co. are getting their camps in good shape. They intend to establish one near the cemetery, and expect to cut 1,500,000 feet of lumber within a short distance of this village. Those of our readers who imagine the pine around here is all cut will be surprised at this information. The shingle and planing mill of Midland and North Shore Lumber Company is now running. The P. S. L. Co. intend making extensive additions to their steam mill during the winter. Mr. W. McGown has just returned from the French River where he has been showing an American gentleman some limits north of that stream.

FOR THE BEST

# TURBINE WATER WHEELS

AND

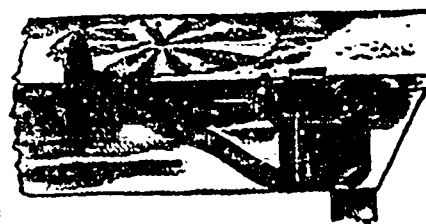
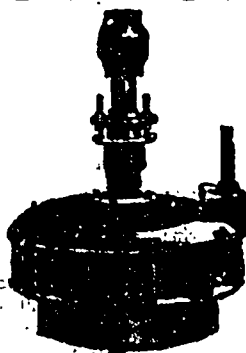
## Mill Machinery,

ADDRESS:

PAXTON, TATE &amp; CO.

PORT PERRY, ONT.

Send for Illustrated Catalogue.



TO MILLMEN!

## HODGSON'S Patent Saw Grinder

Is a new efficient, and exceedingly cheap machine and is equally well adapted to grinding long and round saws of every description. Wheel is moved along the length, and in the depth of the tooth, and can be placed at any angle wanted as easily as a file. It is just THE THING for mills, cutting from one to five million feet of lumber, and costs no more than one-fourth to one-tenth the price of little better machines. It is patented in United States and Canada, and is made in Weisport, Pennsylvania, and in Amherst, Nova Scotia.

### Hodgson's Patent Monitor Shingle Machine

combines, at a moderate price, more points of excellence than any other. Jointer is built in machine, a few inches from the saw. The cast steel feed rolls are opened by a foot lever, and grip the block like a vice. Traverse of carriage to suit large or small stock, is under control of operator when running. Will run for days without cutting a shingle. Warranted to cut, with one attendant, three thousand in an hour, under forfeiture of \$100. Send for circulars to

T. HODGSON, AMHERST, NOVA SCOTIA.

1224

## ROBIN & SADLER

594, 596, 598, St. Joseph St.

MONTREAL

Manufacturers

of

LEATHER BELTING

Fire-Engine

HOSE,

Lace Leather,

Mill Supplies, &amp;c.

1217

## SAW MILLS!

Having POLE ROADS to their Timber keep up the Mill Stock and run the year round.

Pole Roads are Cheap, Durable and Speedily built. The Cars can be built by any handy man in a couple of days, and will carry 2,000 feet of Hardwood Logs at a Load, drawn by one Span of Horses.

The Wheels are adjustable on the Axles to accommodate themselves to any bend in the poles.

The Iron Work complete, including Bolts and Washes, with a diagram of Car, are supplied by the undersigned. Prices on Application.

As to cost and utility of Pole Roads we will refer without permission to E. WATT, Gesto, P.O.; W. EDGAR, Kilroy, P.O., DUNSTAN & IRWIN, Essex Centre, and JAMES NAILOR, Oil City, who are now running respectively 10, 8, 5 and 3 miles, and are stocked with our Cars.

## C. NORSWORTHY & CO., ST. THOMAS, ONTARIO.

Patentees and Manufacturers of Moore's Improved Taper Cone Feed Saw Mills

1712