

Walkerton, and we mention the following varieties from which our correspondent will be safe in selecting, viz:—Wier's cut-leaved, Silver, Red and Norway Maples; American and Cork Elms; European Silver Basswood; Swamp White, Scarlet

Box-elder, European Larch and Walnut.

Among the coniferous Evergreens, we may mention, as hardy and very desirable in grouping:—Norway, White and Hemlock Spruces; Norman's Fir; Red Cedars; Scotch

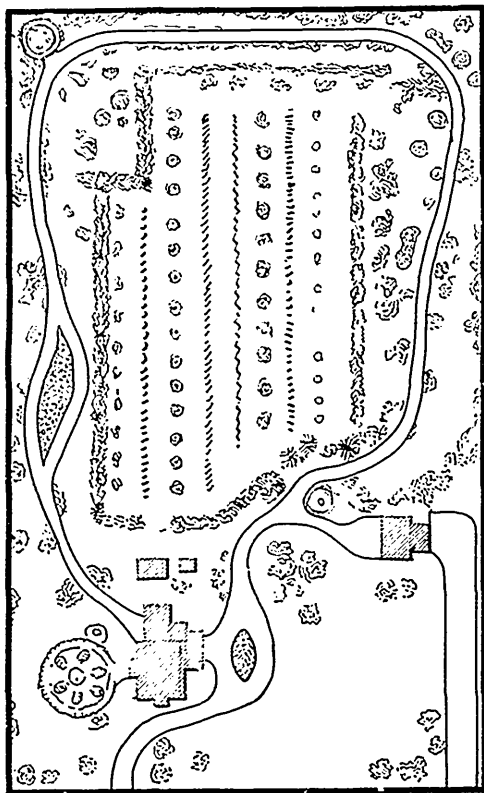


FIG. 22.

FIG. 22.

and Red Oaks; single and double flowering Horsechestnuts; Showy Catalpa (*C. speciosa*); cut-leaved and American White Birches; White and Honey Locusts; Buttonwood (*Platanus occidentalis*); Wisconsin weeping Willow (to be used very sparingly, and preferably near water, see fig. 23); Wild Black Cherry,

Austrian, White and Cembrian Pines, of which the latter is particularly adapted to small grounds.

For planting in prominent positions about the front lawn, or as single specimens, we may suggest the cut-leaved Weeping Birch, the Scarlet Oak, the European and the Oak-leaved Mountain Ash, the Purple