

### HOMESTEADS

Located in a first-class farming country 30 to 50 miles from town.

#### Land For Sale

9 Miles from Elevators \$11 per acre

ON

#### Crop Payments

or any reasonable terms to suit purchaser, also first-class cultivated farms at low prices.

Write and tell me what you want and I will quote you prices, etc.

**T. W. HARGREAVES**  
Real Estate

Milestone Sask.

### C. W. Blackstock & Co. Regina

Lands in the Goose and Eagle Lake Country, Homesteads adjoining, will sell this in blocks of 5000 acres and upwards or in quarter sections.

Four sections in Tp. 23, Rg. 26 W2nd, East of Aylesbury, a snap.

Section 13-28-1-W3rd, \$11 per acre, easy terms.

Half section, six miles south-west of Regina, \$17 per acre.

South-east 36-16-18-W2nd, 110 acres in crop, a good house and stable sell with crop, \$3,000. This is a snap.

For a good buy in Regina city property, consider blocks 385, 386 and 387 at \$11,000, easy terms.

30 sections in block, in Battleford district.

20,000 acres first-class Alberta land, six miles from railroad.

#### FARMER'S ADVOCATE

The subscription price, for 52 issues, is only \$1.50 a year.

Send for a sample copy and be convinced of its merits.

OFFICES: 14 and 16 PRINCESS ST. WINNIPEG.

### The Manufacturers-Life Insurance Co.

Insurance in Force - - - - \$42,270,272.00  
Assets - - - - - 7,189,682.00  
Surplus on Policy-Holders' Account 906,912.64

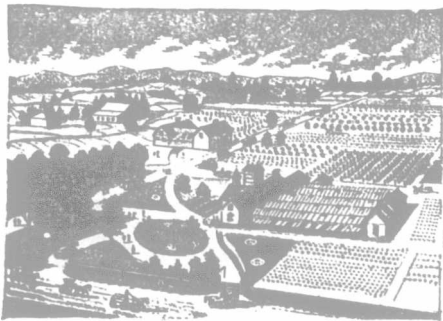
### Money to Loan

#### Agents Wanted

#### BRANCH AGENCIES:

J. Addison Reid, Regina, Sask. J. D. Reid, Moose Jaw, Sask.  
W. B. Barwis, Calgary, Alberta  
De Blois Thibaudeau, Edmonton, Alberta  
Casper Killer, Supt., Manitoba Herbert J. Goode, Loan Inspector  
E. S. Miller, Mgr., Western Canada, 217 McIntyre Blk., Winnipeg, Man.

### CANADA'S GREATEST NURSERIES



### SALESMEN WANTED

For Every Town and District in

**Manitoba,  
Saskatchewan and  
Alberta**

#### HARDY TESTED STOCK FOR WESTERN PLANTING

Largest assortment recommended by Western Experimental Stations at INDIAN HEAD and BRANDON, in Fruit Trees, Small Fruits, Shrubs, Ornamentals, Seedlings for Wind-breaks, etc.

#### START NOW AT BEST SELLING SEASON

Big Inducements, Exclusive Territory, Pay Weekly, Special Equipment for Western men.

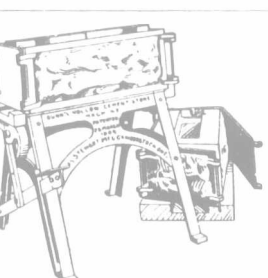
Write now for Terms and Catalogue, and send 25c. for our Aluminum Pocket Microscope and 50c. for our Handy Saw, just the thing for trimming trees; cuts iron as well as wood.

### STONE & WELLINGTON

Over 800 Acres FONTHILL NURSERIES Toronto, Ontario

### BINDER TWINE NO ADVANCE THIS YEAR; 8

For Standard Twine, the best can be secured of us at lower prices than all others ask! Do not fail to send today for our new cash and credit prices with complete samples. **DON'T FAIL** To secure our prices for your own protection, Postal Card places your name on our mailing list for 5 years. Prepared by our secret process, a most desirable feature rendering our twine more valuable than any other, it is limited to 100 lbs. per bale. Registered with the U. S. Government, which is our guarantee that it is of the highest grade, and superior to any other twine made in America. **CRICKET PROOF** TRADE MARK. **SEND** Postal Card to nearest place, and receive by sealed mail, samples, prices, etc. Ask for Lot No. 95. **COOPER CORDAGE COMPANY** 4 Sherman St. | 310 4th Ave. So. | 1209 Union Ave. CHICAGO | MINNEAPOLIS | KANSAS CITY



### DUNN Hollow Concrete Block Machines

are in use from coast to coast, and every one giving the best satisfaction. Concrete blocks make the hand-somest, most durable and cheapest building material. They are simply and quickly made on the **DUNN MACHINE**; and the cost of outfit is very moderate. Full Directions Furnished. Write for Catalogue to DEPT. N.

The JAS. STEWART MFG. CO., Limited, WOODSTOCK, ONT.

## Last Mountain Valley, Saskatchewan

Hundreds of cars settlers effects now being unloaded at Strassburg the centre of this famous district

The lands in this district have been endorsed over their own signatures by such authorities as Prof. Thos. Shaw, Editor of the Prairie Farmer; Prof. Macoum, F.L.S., Dominion Field Naturalist and Botanist, and highest authority on land in Canada; the Editor of the chief American Agricultural Journal, and testimonials signed by 230 new residents of the district. What better proof do you want? Send for their opinions and free map and booklets of the district, beautifully illustrated by photographs taken on the spot.

WM. PEARSON CO., LTD., 308 Northern Branch Building, Winnipeg, Canada.