

# The Canadian Bridge Co., Limited

Manufacturers

WALKERVILLE, ONT.

Locomotive Turn Tables.  
Roofs, Steel Buildings and  
Structural Iron Work of all Descriptions

## RAILWAY AND HIGHWAY BRIDGES

"Judge a Cement by Its Works."

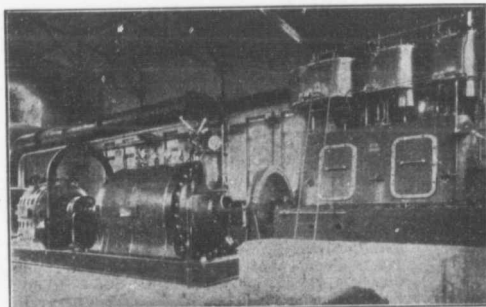
Sold under a **guarantee** other  
portlands cannot make in **good**  
**faith**. That guarantee is backed  
by the **oldest** and most **respon-**  
**sible** manufacturers in the  
world.



Selected for **PANAMA CANAL** in  
Preference at Equal Prices and has  
exceeded those severe require-  
ments.

AMERICANGERMAN

190,000 bbls. Key West so far. 70,000 bbls. City of Rochester Reservoir  
The best color and most **durable** for **cement blocks and sidewalks**. Write for list of other important works in all sections.



Stage Turbine Pump Electric Motor and High Speed Steam Engine.  
Built for the Montreal Water and Power Co. to do 4,500 Imperial  
gallons a minute against 300 feet head. Overall E.F. 70%.

## PATENT TURBINE PUMPS

KORTUNG TWO CYCLE GAS ENGINES,  
GRAVITY AND PRESSURE FILTERS,  
WATER SOFTENING APPARATUS,  
ELECTRICAL MACHINES.

— BUILT BY —

**MATHER & PLATT, LIMITED**  
MANCHESTER, ENG.

**Drummond, McCall & Co., Montreal**

# CANADIAN IRON AND FOUNDRY CO. LIMITED

Special Castings

Flange Pipe  
Branches  
Hydrants



## CAST IRON PIPE

Valves

Valve Boxes and  
General Water  
Works Supplies

SMALL DIAMETER HEELS AND CASTINGS FOR CONTRACTORS  
CAR WHEELS. CASTINGS OF ALL KINDS.

WORKS AT: { HAMILTON, ONT.  
ST. THOMAS, ONT.  
FORT WILLIAM, ONT.

— MONTREAL, P. Q.  
THREE RIVERS, P. Q.  
LONDONDERRY, N. S.

Head Office: **IMPERIAL BANK CHAMBERS, MONTREAL.**