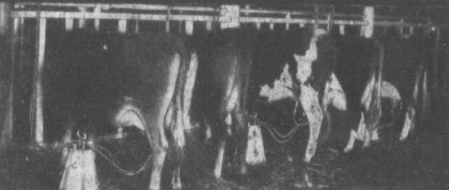


## The World's Finest Dairy Cows are Milked by the SHARPLES MECHANICAL MILKER



Owners of the highest priced dairy cows in America use the Sharples Mechanical Milker. One of the world's highest priced dairy cows, Imported Billy's Lady Frances Gabelle, owned by Branford Farms, Grotton, Conn., is an example. Another, the 7th Dairy Cow on the famous "White Horse Farm" at Paoli, Pa., none of which is valued at less than \$1,000. Read this letter:

After considerable use of your Mechanical Milker, will say it is a **decided success**. I feel justified in saying I could hardly get along without it, so satisfactory has it proved to be from every point of view. It is merely necessary for the dairyman to become acquainted with the Sharples Milker to insure its perfect service and to maintain it in an excellent state.

W. W. BLAKE ARKCOLA, Mgr. White Horse Farm, Paoli, Pa.

When owners of these high-priced animals use and endorse the Sharples Milker, surely you need have no fear of the slightest injury to even the most sensitive animal. Further, it will enable you to add \$500 to \$1,000 extra to your dairy profits each year.

It will do away with the most disagreeable job on the farm, enable you to double your dairy capacity with the same help, give you absolute freedom from worry, and independence from shiftless, unreliable workmen.

Send this coupon for free catalog. We will give you ample time for trial. If the Sharples Milker does not make good, if it don't more than satisfy you, there will be no sale. Guaranteed by The Sharples Separator Company, which has been making high-class Dairy Machinery for 21 years. Write today for free catalog N

**THE SHARPLES SEPARATOR CO.**

WEST CHESTER, PA.

Chicago, Ill.; San Francisco, Cal.; Portland, Ore.

Dallas, Tex.; Toronto, Can.; Winnipeg, Can.



### Peerless<sup>Patented</sup> Protects

We build Peerless Poultry Fence strong enough to keep marauding animals out and sufficiently close to keep small fowl in.

#### A Real Fence That Gives Real Service

Build same on farm fence of good galvanized wire, protecting it against rust. Top and bottom No. 9 heavy hard steel wire—intermediate horizontal wires No. 12—state No. 12 to the rest. This makes an excellent, all around, general purpose fence suitable for fencing all classes of stock.

Agents nearly everywhere. Live agents wanted in unassigned territory.

**The Barnwell Haxby Wire Fence Co., Ltd., Winnipeg, Manitoba, Hamilton, Ont.**



Send for this book to-day

## How Would You Build a Barn?

WHERE would you put it? How big should it be? How ought it to be arranged inside? What provision would there be for storing crops? How would you provide for convenient feeding; for removal of manure, for easy access to stalls, store-rooms, hay-loft and feed-bins? What materials should you use—for foundations, for framing, for siding and for roofing?

In short, how would you plan the building so as to get the greatest possible barn value out of the money and labor invested?

These are a few of the questions you must answer before starting the foundation trench.

They're all answered in our handsome free book,

### "How to Build a Barn"

This book contains complete plans and specifications for all varieties of barns. It is written for Canadian farmers, and every barn described is designed for Canadian weather conditions. The descriptions aren't just general "ideas"—they are carefully-prepared architect's specifications, expressed so plainly that anyone can understand them. Dimensions, requirements for materials, method of erection and all other details are carefully explained. Drawings show floor plans, front and side elevations and framing details.

The book also describes Galt Steel Shingles—the shingles that are lightest, most easily placed, that do not require painting, are fire-proof, lightning-proof, rain-proof and wind-proof.

The book was published to sell at 50 cents. But we've decided for a time to send a copy free to any farmer who writes for it.

Send your name and address to-day. The book will be sent you by return mail.

## GALT ART METAL COMPANY, LTD.

151-155 Stone Road, GALT, ONTARIO

### BRANCHES:

Wm. Gray Sons—Campbell Ltd. 363 St. Paul St. Montreal  
Galt Art Metal Co. Ltd. 313 Henry Ave. Winnipeg, Man.  
J. L. Lachance Ltd. 238 St. Paul St. Quebec, Que.  
Montague Bush and Door Factory, Montague, P.E.I.  
Norman Chancy & Grisdley Ltd., Edmonton, Alta.  
R. L. Morrison, 714 Richard St. Vancouver, B.C.  
Gorman Chancy & Grisdley Ltd., Calgary, Alta.  
General Contractors Supply Co. Halifax, N.S.  
Gestout & Sons, Fredericton, N.B.  
Fife Howe Co., Port Williams, Ont.  
Estey & Co., St. John, N.B.

Send us your book

FD

## The Best Cream Separator is the Cheapest in the End

THE cost of manufacturing a cream separator determines the price at which it may be sold.

Therefore, when selecting a separator, remember that the machines which are offered at an unreasonably low price can be offered at that price for one reason only—they are built to sell at prices lower than the cost of good material or workmanship.

Such separators are costly at any price. Only a good separator is cheap; not because of a low first cost, but because it will last for years and save enough butterfat from the milk of four or five cows every year to pay for itself. The best workmanship and material that money can buy are used in making



## I H C Cream Harvesters Dairymaid and Bluebell

You will find an I H C the cheapest separator you can buy, because it will do better work and last longer than any other separator.

Go to the nearest I H C dealer who handles these separators and see how carefully they are made. You will find that they have phosphor bronze bushings—that the gears are spiral cut—are entirely protected from grit and milk, and at the same time are easily accessible.

The neck bearing is trouble-proof. The patented dirt-arrester chamber removes impurities before separation begins. These separators are made in four sizes. Ask the I H C local agent to show you one, and give you a catalogue, or, write the nearest branch house for catalogue and any other information desired.

### CANADIAN BRANCH HOUSES

#### International Harvester Company of America (Incorporated)

At Brandon, Calgary, Edmonton, Hamilton, Lethbridge, London, Montreal, North Bay, Ottawa, Quebec, Regina, Saskatoon, St. John, Weyburn, Winnipeg, Yorkton.

#### I H C Service Bureau

The purpose of this Bureau is to furnish, free of charge to all, the best information obtainable on better farming. If you have any worthy questions concerning soils, crops, land drainage, irrigation, fertilizing, etc., mention your inquiries specific and send them to I H C Service Bureau, Harvester Building, Chicago, U. S. A.

