

10% INVESTMENT

A successful Corporation, established 15 years, will sell small amount of stock—paying 10 per cent. per annum. Cause, increased capacity of business. Rare investment. For particulars, address

**Room 601, Merchants Bank Building,
MONTREAL, P.Q.**

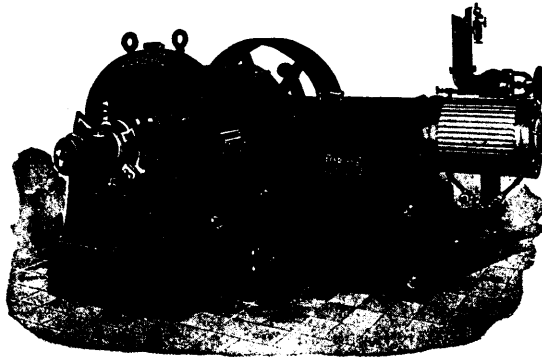
THE ELECTRICAL CONSTRUCTION CO. OF LONDON, Limited

**For Dynamos,
Motors, Wiring
Fixtures, Complete
Electric Plants.**

Insulated Lighting Plants for
Factories, Stores, and
Public Buildings a Specialty.

Estimates cheerfully given.

Head Office and Factory:
90 York St., London,
Ont.



GOOD ROADS MACHINERY CO.

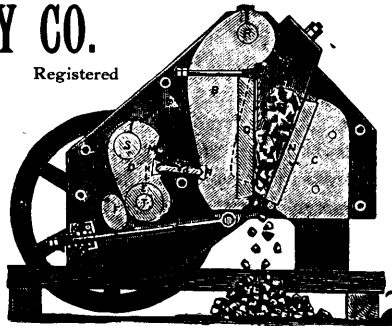
JOHN CHALLEN, Manager. HAMILTON, ONT. Registered

"Champion"

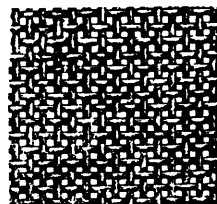
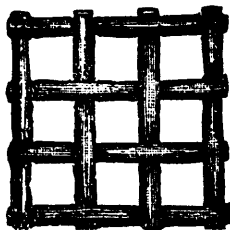
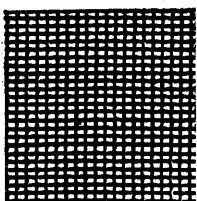
STEEL FRAME ROCK CRUSHER. Sectional
view of parts.

Road Graders, Road Rollers,
Macadam Spreading Wagons,
Street Mud Cleaners Road Plows
Wheel and Drag Scrapers.

Now introduced in every Province of the Dominion.
Twentieth Century Catalogue now ready.



Wire Cloth



**FOR MINING AND MILL
PURPOSES**

ALL GRADES MANUFACTURED BY

The Geo. B. Meadows, Toronto,
Wire, Iron and Brass Works Co., Limited,
117 King Street West, Toronto, Canada.

CANADIAN MANUFACTURING TOWNS.

Business in Guelph, writes our Mr. Oliver, especially among the manufacturers, is in a very flourishing condition as a rule. The expansion of business has not been altogether in local trade, especially in pianos and organs, which are going hence to Europe, Australia and other countries. The Bell Organ & Piano Co. has almost a world-wide reputation, and material additions have been made to their large factory at Guelph, where now some 400 men are employed day and night, and the business of the firm was never more flourishing than at the present time. I found the usual cheerful activity pervading the offices and works of the James Goldie Co., which has one of the large flouring mills of the Dominion; capacity, 500 barrels daily. Large premises have been erected on the Market Square, named the Market and Winter Fair Building. It contains several departments for cattle, poultry and other farm productions. The Robertson Taylor Manufacturing Co. has erected large premises for its Magnet Cream Separator, and the Raymond Manufacturing Co., makers of machines, have erected a new large building with a stone basement, on Baker street, not far from the present premises.

Preston is an interesting town, containing large manufacturing industries, especially in the furniture line. The Canadian Office and School Furniture Co. are very busy. They have lately fitted up several of the banking offices in Manitoba and the West, notably two in Winnipeg—the Dominion and Bank of Commerce; from what I heard a bank manager say, who saw them after they were finished, they give every satisfaction. The Preston Furniture Co., is another company very busy manufacturing for Manitoba and the West. They employ from 80 to 90 hands. The premises of the Clare Bros. & Co. are also kept very busy by their increasing trade; they employ 120 hands making stoves, ranges, hot water boilers, furnaces, etc. Quite lately they have added a moulding shop to the premises. This business was established in 1852, so that it has age as well as growth. The large woolen mill of George Pattison & Co. is a feature of Preston. It is kept very busy; additions and improvements appear to be made to this mill every year or two.

The two woolen manufacturers, Hespeler, those of the R. Forbes Limited, and A. W. Brodie, now the Canadian Woollen Mills Co., are also very busy, and their old business is expanding yearly.

The McCaskill steam sawmill, at Little Narrows, C.B., has been destroyed by fire. Loss, \$2,000; no insurance.

The building occupied by the Stock Exchange in Montreal was not sold to that body. It has been sold to outside parties for \$50,000, or thereabout.