

We have been watching with great interest the progress of the grand Tourney of the Canadian Chess Association, now approaching completion at Montreal.

According to the Detroit Free Press (U. S.), the remarkable success that has attended the late series of game and problem tourneys in America has given a great impetus to the game of Chess.

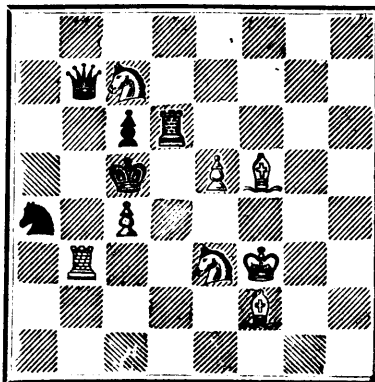
The following is the latest score in the International Postal Card Tourney: British Gains—J. Copping, J. T. Palmer, Wm. Nash, E. Palmer, H. Monck, R. H. Philip, H. Brewer, one each; J. Parker and Col. Sergt. Woods, two each—11; G. W. Stevens and D. M. Latta have drawn one each.

PROBLEM No. 196.

By W. C. COTTON.

(From English Chess Problems.)

BLACK.



WHITE

White to play and mate in two moves.

CANADIAN CHESS CORRESPONDENCE TOURNEY.

GAME 303RD.

Played between Mr. J. Foster and Mr. G. P. Black, both of Halifax, N.S.

WHITE—(J. S. Foster.) BLACK—(G. P. Black.)

- 1. P to Q B 4
2. Q Kt to B 3
3. P to Q R 3
4. P to K 3
5. P to K Kt 3
6. Q to R 4 (a)
7. P to Q Kt 4
8. P takes P
9. Q B to R 3
10. Q R to Kt sq
11. Q takes Kt
12. B to Q 3
13. P to K R 4
14. Kt takes P
15. B takes Kt
16. B to Q 5
17. Kt to K 2
18. Kt to Q B 3 (7)
19. Q Kt to K 4
20. P to to K R 5
21. P to K B 3
22. P to K B 4
23. K to K 2
24. P to Q 3
25. K to K B 2
26. Kt to Q B 3
27. P to K 4
28. K to K Kt 2
29. Kt to Q Kt 5
30. Kt to Q B 3
31. Kt to Q sq
32. K to K R 2
33. Kt to K B 2
34. K R to K sq
35. Kt takes B
36. Q to Q 2
37. Q to Q sq
38. P takes P
39. Q takes R
40. Q to K 2
41. R to Q Kt 5 (h)
42. B to K 4
43. R to K Kt 5
44. R to K R 5 (ch)
45. Q to Q R 2
46. K to K Kt 5 (ch)
47. Q to Q R 4
48. Q to Q sq
49. P to K B 5 (i)
50. Q takes K Kt P
51. B to Q 5
52. P to K B 6 (ch)

NOTES.

- (a) The object of this move is not very apparent.
(b) This move brings the White Q into a better position, and leads to immediate trouble on the part of Black.
(c) P to R 3 would, perhaps, be safer.
(d) Kt to B 4 is, also, a good move.
(e) B to K Kt 5, checking, would be preferred by many.
(f) The position is interesting at this point.
(g) We prefer here P takes K Kt P, followed by R to K Kt sq.
(h) The right move.
(i) This and the following moves are very well played by White.

CHESS IN DENMARK.

GAME 304TH.

A brilliant skirmish played some time ago between Mr. S. A. Sorensen and Mr. Ludvigsen.

WHITE.—(Mr. L.) BLACK.—(Mr. S.)

- 1. P to K 4
2. Kt to K B 3
3. Kt takes K P
4. Q to K R 5 (ch)
5. Kt takes Kt P
6. Q takes K B P
7. Q to K B 3
8. B to Q Kt 5
9. Kt to Q B 3
10. Q to K Kt 3
11. Kt takes B
12. Q to K 3
13. P to Q 3
14. Q to K 2
15. Q R takes B
16. Castles
17. Kt takes Q B P (ch)
18. P to K B 4
19. P takes Q
20. K takes R
21. K to Kt sq
22. K to R sq

SOLUTIONS.

Solution of Problem No. 194.

- WHITE. BLACK.
1. B to R 5 1. Kt takes P
2. B takes R P 2. Anything
3. B or Kt mates Black has other defences.

Solution of Problem for Young Players No. 192.

- WHITE. BLACK.
1. Kt to Q B 6 1. Any move
2. Kt or B mates

PROBLEMS FOR YOUNG PLAYERS, No. 193.

- WHITE. BLACK.
K at K R 3 K at K Kt 3
Q at K 5 R at K B 4
R at K B 3 B at K Kt sq
Kt at K 3 Pawns at Q 2 and
Pawn at K Kt 4 R 3
White to play and mate in two moves.

LONDON MANUFACTURING CO.'S ESSENCES OF MEATS.

For Invalids, Travellers, and Persons of Delicate Health.

- ESSENCE OF BEEF,
ESSENCE OF MUTTON,
ESSENCE OF CHICKEN.

These Essences consist solely of the Juices of the Finest Meats extracted by gentle heat without the addition of water or any substance, and are ready for use direct from the can, without further preparation, and will be retained by the stomach in the most severe cases of illness.

An excellent stimulant in cases of Diphtheria, Hemorrhage, and all cases of depressed system, and low vital power; almost a specific in cases of sea sickness and dyspepsia, and the ailments of infants in summer have been cured by this excellent Essence.

Wholesale by LYMANS, CLARE & CO., and H. SUGDEN EVANS, and by all Druggists and Grocers.

The Ottawa River Navigation Company.

FALL ARRANGEMENT—REDUCED FARES.

On and after MONDAY, 7th OCTOBER, the Day Steamers will be withdrawn and replaced by Night Steamers between

MONTREAL and OTTAWA.

Passengers leave Bonaventure Depot daily at 5 p.m. Train for Lachine to connect with Steamer.

- First-class Fare (Montreal to Ottawa).....\$2.50
Second-class do. do. 1.25
Return (First-class do. do. 4.00

Freight at Low Rates. Freight Office—87 Common street. Tickets at Company's Office, 13 Bonaventure Street, Montreal, or at Grand Trunk Railway Office.

R. W. SHEPHERD, President.

60 Chromo and Perfumed Cards.

(no 3 alike). Name in Gold and Jet, 10 cents. CLINT'S BROS., Clintonville, Ct.

25 FANCY CARDS with Name 10c. Plain or Gold, Agents' Outfit 10c. 150 Styles. Hull & Co., Hudson, N.Y.

JOHN McARTHUR & SON

OIL, LEAD, PAINT,

COLOR & VARNISH MERCHANTS

IMPORTERS OF

English and Belgian Window Glass, Rolled, Rough and Polished Plate Glass, Colored, Plain and Stained Enamelled Sheet Glass,

PAINTERS' & ARTISTS' MATERIALS, BRUSHES, CHEMICALS, DYE, STUFFS, NAVAL STORES, &c.

310, 312, 314 & 316 ST. PAUL ST.,

AND

253, 255 & 257 COMMISSIONERS ST.

MONTREAL.

26-17-52-369

DYSPEPSIA, LIVER COMPLAINT, and all DISEASES OF THE BLOOD and SKIN radically cured by using NEPENTHE BITTERS. Ask for

NE-PEN-THE BITTERS,

ask no other, and you will obtain immediate relief. 16-25-46-266.

25 Fashionable Visiting Cards—no two alike, with name, 10c. Nassau Card Co., Nassau, N. Y.

25 Styles of Cards 10c., or 18 best Chromos 25 10c. with name. Samples 3c. J. B. Husted, Nassau, N. Y.

E. N. FRESHMAN & BROS.

Advertising Agents,

186 W. Fourth St., CINCINNATI, O.,

Are authorized to receive advertisements for this paper. Estimates furnished free upon application.

Send two stamps for our Advertisers' Manual.

NOTICE TO THE PUBLIC.

CANADIAN MECHANICS' MAGAZINE

PATENT OFFICE RECORD.

This VALUABLE MONTHLY MAGAZINE has been much improved during the past year, and now embodies within its pages the most Recent and Useful information published connected with Science and the different branches of Mechanical Trades, selected with particular care, for the information and instruction of Mechanics in Canada.

ILLUSTRATED FAMILY FRIEND,

SUCH AS

FLORAL CULTURE, NATURAL HISTORY, POPULAR GAMES AND AMUSEMENTS, LADIES' FANCY AND NEEDLE WORK, AND SHORT PLEASING STORIES,

ALSO

SELECTED NEW MUSIC,

DOMESTIC RECEIPTS, &c.

The Canadian Mechanics' Magazine,

with the addition of the

Illustrated Family Friend

PATENT OFFICE RECORD,

Contains 16 full pages of Superior Illustrations and about 125 diagrams of all the Patents issued each month in Canada; it is a work that merits the support of every Mechanic in the Dominion, whose motto should always be

"SUPPORT HOME INDUSTRY."

Price, only \$2.00 per annum.

BURLAND-DESBARATS LITH. CO.,

PROPRIETORS AND PUBLISHERS,

5 and 7 BLEURY STREET, MONTREAL.

F. H. BOXER, Architect, Editor.

British American

BANK NOTE COMPANY,

MONTREAL.

Incorporated by Letters Patent.

Capital \$100,000.

General Engravers & Printers

Bank Notes, Bonds,

Postage, Bill & Law Stamps,

Revenue Stamps,

Bills of Exchange,

DRAFTS, DEPOSIT RECEIPTS,

Promissory Notes, &c., &c.,

Executed in the Best Style of Steel Plate

Engraving.

Portraits a Specialty.

G. B. BURLAND,

President & Manager.

THE COOK'S FRIEND

BAKING POWDER

Has become a HOUSEHOLD WORD in the land, and is a HOUSEHOLD NECESSITY

in every family where Economy and Health are studied. It is used for raising all kinds of Bread, Rolls, Pan cakes, Griddle Cakes, &c., &c., and a small quantity used in Pie Crust, Puddings, or other Pastry, will save half the usual shortening, and make the food more digestible

THE COOK'S FRIEND

SAVE TIME, IT SAVES TEMPER, IT SAVES MONEY.

For sale by storekeepers throughout the Dominion, and wholesale by the manufacturer.

W. D. McLAREN, UNION MILLS,

17-19-52-362

55 College Street.

MANOEL DUTRA SILVA,

New House of Consignments of all kinds,

BAHIA, BRAZIL,

Receives Vessels and Steamers of all Nations.

5 per cent Commission.

All Letters to be Prepaid as above.

New Work of Vital Interest.

Post Free 12 Cents or 6d. stg.

FROM

J. WILLIAMS, P. M.

22, MARISCHAL STREET, ABERDEEN, SCOTLAND, NORTH BRITAIN.

A LONG AND HEALTHY LIFE.

CONTENTS:

- 1.—Medical Advice to the Invalid.
2.—Approved Prescriptions for Various Ailments, including Exhaustion, Loss of Nerve Power and Debility.
3.—Phosphorus as a Remedy for Melancholia, Loss of Nerve Power, Depression, and Nervousness.
4.—The Cocoa Leaf a Restorer of Health and Strength.
5. Hints on Self-Treatment and Cure. 17-1-52-309

25 Chromo Cards, Cupids, Mottos, Flowers, &c. No. 25 alike, with name, 15c. Nassau Card Co., Nassau, N. Y.

BIG PAY Made by Agents selling our RUBBER STAMPS for Banking and general business purposes. Agents Wanted. Terms Free. Address G. C. STEWART, Toronto, Ont. P. O. Box 1557.

JUST PUBLISHED

CHISHOLM'S ALL-ROUND ROUTE AND PANORAMIC GUIDE OF THE ST. LAWRENCE,

With corrections to date. It contains full descriptions of the points of interest on the "All Round Route," including Hudson River, Trenton and Niagara Falls, Toronto, Ottawa, Montreal, Quebec, Saguenay River, White Mountains, Portland, Boston, New York. It is profusely illustrated, and is furnished with maps of the Route, and a fine panoramic view of the St. Lawrence River. For sale by booksellers and news agents. Sent post-paid to any address on receipt of the price, 50 cts.

C. R. CHISHOLM & BROS.,

17 26-52-373 179 Bonaventure street, Montreal.



THOMAS CREAN MILITARY TAILOR,

Master Tailor to the Queen's Own Rifles. Late Master Tailor in H. M. 16th Regiment. Uniforms and accoutrements strictly in accordance with the "Dress Regulations for the Army," and of the best workmanship and quality. The New Regulation Helmet in stock. Price Lists sent on application. 435 YONGE STREET, Toronto.

IMPORTANT NOTICE.

THE

Burland-Desbarats Lithographic Co.

5 & 7 BLEURY ST.,

Begs to inform the BANKERS, MERCHANTS and BUSINESS MEN of the Dominion, that their large establishment is now in full operation, and that they are prepared to do all kinds of

ENGRAVING, ELECTROTYPING, STEREOTYPING, LITHOGRAPHING and TYPE PRINTING,

Photo-Electrotyping & Wood Engraving

IN THE BEST STYLE, AND AT LOW PRICES.

Special attention given to the reproduction by

Photo-Lithography

OF

MAPS, PLANS, PICTURES OR BOOKS

OF ANY KIND.

From the facilities at their command, and the completeness of their establishment, the Company feel confident of giving satisfaction to all who entrust them with their orders.

G. B. BURLAND, Manager.

CHEAPEST AND BEST.



JOHN DOUGALL & SON,

218 and 220, St. James Street, Montreal.

Electrotyping and Job Printing, Chromatic and plain.