

Dye Stockings Or Sweater In Diamond Dyes

"Diamond Dyes" add years of wear to worn, faded shirts, waists, coats, stockings, sweaters, coverings, hangings, draperies, everything. Every package contains directions so simple any woman can put new, rich, fadeless colors into her worn garments or draperies even if she has never dyed before. Just buy Diamond Dyes—no other kind—then your material will come out right, because Diamond Dyes are guaranteed not to streak, spot, fade, or run. Tell your druggist whether the material you wish to dye is wool or silk, or whether it is linen, cotton or mixed goods.

John Anderson's Bill

(Air "Young Lochinvar")
John Anderson's bill on to-morrow will rest,
Next summer we'll hail it once more as our guest.
'Tis talked of and praised by East, West, North and South,
It's value is spoken by every mouth.
The man in the mine with his hammer and drill,
He has a good word for John Anderson's bill.
The men who are toiling at fish and at coal,
They say that John A. is a jolly old soul.
That he did a kind act for the rich and the poor,
Which no one had ever gave heed to before.
No doctor can heal with a tonic or pill
Like the health they all feel from John Anderson's bill.
The girls who are toiling, at all kinds of toil,
God bless 'em, the pride of our dear little Isle.
By the breath of the morning, their cheeks like the rose,
Advertise the fact that it's welcome to those:
And at eve when they ramble by mountain and rill,
They speak a kind word for John Anderson's bill.
The children are even delighted, they say—
The ones who are toiling at school all the day—
For an hour or for two after tea they go out,
On the streets we can hear them with merriment shout,
Here's to the inventor, who used tongue and quill,
Indeed, 'tis a peach, is John Anderson's bill.
With me all agree that when John A. is dead,
A fine handsome stone should be placed at his head;
The following line should be on it of praise:
"Here lies a good man who has lengthened our days;
"May a home with the angels be his for his skill,
"For there's nothing to equal John Anderson's bill."
"AULD SCOTIA."
St. John's,
Sept. 30th, 1922.

Record Attendance at Promenade Concert

A record was achieved in attendance at the Prince's Rink last evening, when over 4,000 people attended the Promenade Concert given by the C.C.C. and Mount Cashel Bands in aid of the Orphanaid Club lottery. Two teams of members of the Club disposed of a large number of tickets in the lottery for the Orphanaid car. A very large number of people availed of the dancing numbers, the floor being crowded at each item.
During the evening, Mr. Karl Trapnell sang some pleasing numbers which were heartily applauded. Mr. T. H. O'Neil rendered a splendid recitation in his inimitable style. To Captain Bulley and the members of the two bands great credit is due as it was a voluntary offering on their part which brought about the Concert. The drawing for the car will take place on Monday evening.

NOTICE!

North Sydney to St. John's.
S. S. SABLE I. leaves North Sydney every Saturday at 2.30 p.m., and St. John's, N.F., every Tuesday at 10.00 a.m.
HARVEY & CO. LTD.,
Agents, St. John's, Nfld.
FARQUHAR STEAMSHIP COMPANIES,
Halifax, N.S.

Lowered Prices on New Goods during the OCTOBER Housefurnishing Sale

Commencing Monday at The Royal Stores

This important Sale comes at a time when SAVINGS are the uppermost THOUGHT in the minds of all thrifty Housekeepers. We have planned to make this a savings opportunity for every housewife. We have now, at this store, a profusion of the very newest merchandise for Fall and Winter, and every item offered during this sale, is part of this new stock. We have sacrificed profits absolutely and rely on your satisfaction for our reward, because we consider that a satisfied customer is our biggest asset. So we invite you—come early in the week—and get your share of these bargains.



Curtain Materials

CURTAIN MATERIAL
Handsome Velours; colors of Brown, Green and Rose; 48 inches wide. Reg. \$1.25 yard for... \$1.08
Utrecht Velvet; in Crimson and Green. Reg. \$1.25 yard for... \$1.08
Broadened Tapestry; 50 ins. wide. Reg. \$3.35 yard for... \$2.99
Reg. \$3.52 yard for... \$3.29
Reg. \$4.29 yard for... \$3.78
Reg. \$4.80 yard for... \$4.32
American Climates; 36 ins. wide. Reg. 50c. yard for... 45c.
Reg. 80c. yard for... 72c.
English Chintzes; 50 ins. wide. Reg. \$1.25 yard for... \$1.12
Art Satens; 31 ins. wide. Reg. 60c. yard for... 54c.
Reg. 70c. yard for... 65c.
CRATONES
Plain shades with colored borders; 40 inches wide. Reg. 90c. yard for... \$1e.
Floral designs; 36 ins. wide. Reg. 65c. yard for... 59c.
ART SERGES
In Cardinal and Green; 50 inches wide. Reg. \$1.55 yard for... \$1.40
Reg. \$1.85 yard for... 1.67
GREEN BAIZE
36 inches wide. Reg. 60c. yard for... 54c.
Reg. 90c. yard for... \$1e.
CASEMENT CLOTHS
In Whites and assorted colors. 50 ins. wide. Reg. 80c. yard for \$2e.
50 ins. wide. Reg. 95c. yard for \$2e.
48 ins. wide. Reg. \$1.00 yard for 90c.
COTTON DAMASKS
In Olive and Cardinal. 50 inches wide. Reg. \$1.00 yard for... 90c.
MADRAS MUSLINS
Plain edge. 50 ins. wide. Reg. 85c. yard for 77c.
Tasseled. 36 ins. wide. Reg. 80c. yard for 72c.
45 ins. wide. Reg. \$1.10 yd. for 99c.
45 ins. wide. Reg. \$1.20 yd. for \$1.08
With colored borders; 45 ins. wide. Reg. 85c. yard for... 77c.
Reg. \$1.35 yard for... \$1.22
SCRIMS
White with colored borders; 36 inches wide. Reg. 30c. yard for... 26c.
Reg. 70c. yard for... 62c.
Reg. 90c. yard for... 78c.
With hemstitched borders; 36 inches wide. Reg. 40c. yard for... 36c.
Reg. 70c. yard for... 62c.
Reg. 90c. yard for... 78c.
CARPET SQUARES
Tapestry; Reg. \$30.00 ea. for \$27.00
9 x 12 feet. Reg. \$33.00 ea. for \$28.70
9 x 12 feet. Reg. \$37.00 ea. for \$33.30
Velvet Pile: 3 x 3 1/2 yards. Reg. \$63.00 each for \$56.70
3 x 4 yards. Reg. \$72.00 each for \$64.80
3 x 4 yards. Reg. \$40.00 each for \$36.00

Table Damask

Blay, assorted handsome designs.
56 inches wide. Reg. 60c. yard for... 54c.
58 inches wide. Reg. 90c. yard for... 81c.
48 inches wide. Reg. \$1.10 yard for... 99c.
55 inches wide. Reg. \$1.20 yard for... \$1.08
White
45 inches wide. Reg. 80c. yard for... 72c.
54 inches wide. Reg. \$1.10 yard for... 99c.
72 inches wide. Reg. \$1.35 yard for... \$1.23
63 inches wide. Reg. \$1.65 yard for... \$1.49
68 inches wide. Reg. \$2.20 yard for... \$1.98

White Sheetting

Plain.
66 inches wide. Reg. 80c. yard for... 72c.
64 inches wide. Reg. 85c. yard for... 77c.
70 inches wide. Reg. 95c. yard for... 86c.
80 inches wide. Reg. \$1.10 yard for... 99c.
Twilled.
66 inches wide. Reg. 70c. yard for... 62c.
70 inches wide. Reg. \$1.10 yard for... 99c.
82 inches wide. Reg. \$1.20 yard for... \$1.08
80 inches wide. Reg. \$1.45 yard for... 1.31
90 inches wide. Reg. \$1.65 yard for... 1.49

Household Linens

PILLOW CASES
Plain Faced; size 17 x 28. Reg. \$2.50 each for... \$2.25
Plain hemstitched; size 23 x 34. Reg. 65c. each for... 59c.
Plain Filled; size 22 x 34. Reg. 55c. each for... 50c.
Plain Filled; size 24 x 33. Reg. 85c. each for... 77c.
Fruited and Embroidered. Reg. 90c. each for... \$1e.
PILLOW SHAMS
Plain Hemstitched; size 23 x 34. Reg. 65c. each for... 59c.
DAMASK TABLE CLOTHS
With hemstitched borders; size 45 x 45. Reg. \$2.50 each for... \$2.25
Reg. \$3.00 each for... 2.73
Size 65 x 83. Reg. \$7.25 each for... 6.73
Hemmed; assorted patterns. Size 51 x 51. Reg. \$1.89 ea. for \$1.62
Size 50 x 50. Reg. \$2.29 ea. for \$1.98
Size 58 x 58. Reg. \$3.69 ea. for \$3.21
Size 72 x 72. Reg. \$4.25 ea. for \$3.85
Size 72 x 72. Reg. \$5.50 ea. for \$5.25
Size 72 x 90. Reg. \$8.50 ea. for \$7.65
DAMASK TABLE NAPKINS
With hemstitched borders; assorted designs. Size 20 x 20. Reg. 45c. ea. for 41c.
Size 22 x 22. Reg. 65c. ea. for 59c.
Hemmed. Size 18 x 18. Reg. 35c. ea. for 32c.
Size 19 x 19. Reg. 45c. ea. for 41c.
Size 24 x 24. Reg. 60c. ea. for 54c.
HONEY COMBED QUILTS
Of fine grade White Cotton; fringed ends. Size 2 x 2 1/2. Reg. \$2.25 each for... \$2.10
Reg. \$3.00 each for... 2.70
Reg. \$3.45 each for... 3.10
55" x 81". Reg. \$3.75 each for \$3.47
3 x 2 yards. Reg. \$4.65 ea. for \$4.19
77" x 95". Reg. \$5.00 each for \$4.50
CROCHET QUILTS
Heavy White Cotton; assorted designs; size 2 1/2 x 2 1/2. Reg. \$3.80 each for... \$3.42
MARCELLA QUILTS
Beautiful Damask design. Size 2 x 2 1/2. Reg. \$4.25 ea. for \$3.83
Size 2 x 2 1/2. Reg. \$5.20 ea. for \$4.68
Size 2 x 2 1/2. Reg. \$6.00 ea. for \$5.40
Size 2 x 2 1/2. Reg. \$7.00 ea. for \$6.30
Size 2 x 2 1/2. Reg. \$9.00 ea. for \$7.20
WHITE SHEETS
Hemmed ends; plain. Size 2 x 2 1/2. Reg. \$5.50 pr. for \$5.23
Size 2 1/2 x 2 1/2. Reg. \$6.75 pair for \$6.15
Twilled. Size 2 x 2 1/2. Reg. \$5.80 pr. for \$5.23

Linoleums and Canvases



FLOOR CANVAS
2 yards wide; assorted patterns; exceptional qualities. Reg. \$1.55 yard for... \$1.40
Reg. \$1.75 yard for... 1.58
Reg. \$2.20 yard for... 1.98
STAIR LINOLEUMS
22 1/2 inches. Reg. \$1.10 yard for... 99c.
Reg. \$1.20 yard for... \$1.08
INLaid LINOLEUMS
2 yards wide; assorted designs; Tiles, floral and Diamond. Reg. \$3.75 yard for... \$3.60
Reg. \$4.00 yard for... \$3.85
Reg. \$5.00 yard for... \$4.50
Reg. \$6.20 yard for... \$5.58
Reg. \$6.55 yard for... \$5.90
STAIR CANVASES
Assorted widths. Reg. 50c. yard for... 45c.
Reg. 60c. yard for... 54c.
Reg. 70c. yard for... 63c.
PAINTED LINOLEUMS
2 yards wide; a wide range of new designs. Reg. \$2.55 yard for... \$2.30
Reg. \$2.80 yard for... \$2.52
Reg. \$3.00 yard for... \$2.70
Reg. \$3.20 yard for... \$2.88

Flannelettes

Plain and fancy striped; 30 inches wide. Reg. 25c. yard for... 23c.
Reg. 28c. yard for... 26c.
Reg. 30c. yard for... 27c.
Reg. 35c. yard for... 32c.
Reg. 40c. yard for... 36c.
Reg. 45c. yard for... 41c.
CIRCULAR PILLOW COTTON
Plain. 42 inches wide. Reg. 75c. yard for... 68c.
40 inches wide. Reg. 85c. yard for... 77c.
36 inches wide. Reg. 90c. yard for... 81c.

Towellings

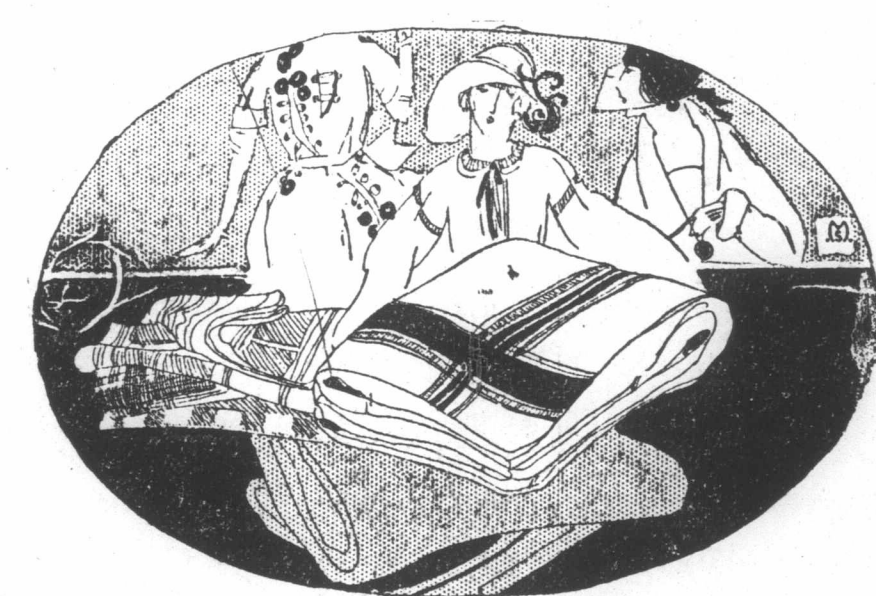
Crash, White with colored borders. Reg. 30c. yard for... 27c.
Reg. 35c. yard for... 32c.
Huck-a-buck. Reg. 45c. yard for... 41c.
Reg. 47c. yard for... 43c.
Reg. 55c. yard for... 50c.
Glass; Red and Blue Checks. Reg. 22c. yard for... 20c.
Reg. 25c. yard for... 23c.
Reg. 28c. yard for... 26c.
Reg. 35c. yard for... 32c.

Carpets and Rugs



STAIR CARPETS
Tapestry, handsome Oriental designs; with bordered effects. 18 inches wide. Reg. \$1.55 yd. for \$1.35
18 inches wide. Reg. \$1.75 yd. for \$1.58
22 1/2 inches wide. Reg. \$1.80 yd. for \$1.62
22 1/2 inches wide. Reg. \$2.20 yd. for \$1.80
22 1/2 inches wide. Reg. \$2.20 yd. for \$1.98
COCONUT MATTING
18 inches wide. Reg. 75c. yd. for 68c.
22 1/2 ins. wide. Reg. \$1.00 yd. for 90c.
27 inches wide. Reg. \$1.25 yd. for \$1.13
36 inches wide. Reg. \$1.45 yd. for \$1.31
STAIR DRUGGETT
15 inches wide. Reg. 30c. yard for 27c.
18 inches wide. Reg. 40c. yard for 36c.
22 1/2 ins. wide. Reg. 60c. yard for 54c.
22 1/2 ins. wide. Reg. 70c. yard for 62c.
CARPET SQUARES
Tapestry; 8 1/2 x 10 1/2 feet. Reg. \$30.00 ea. for \$27.00
9 x 12 feet. Reg. \$33.00 ea. for \$28.70
9 x 12 feet. Reg. \$37.00 ea. for \$33.30
Velvet Pile: 3 x 3 1/2 yards. Reg. \$63.00 each for \$56.70
3 x 4 yards. Reg. \$72.00 each for \$64.80
3 x 4 yards. Reg. \$40.00 each for \$36.00

Blankets and Quilts



EIDERDOWN QUILTS
Silk and Satin covered. Size 24 x 36. Reg. \$ 4.50 each for \$ 4.05
Size 66 x 72. Reg. \$ 9.70 each for \$ 8.73
Size 56 x 68. Reg. \$12.50 each for \$12.15
Size 60 x 72. Reg. \$12.00 each for \$10.80
Size 66 x 72. Reg. \$15.50 each for \$14.53
Size 72 x 72. Reg. \$17.25 each for \$15.59
WABDED QUILTS
Covered with Satene and Art Cotton; all full sizes. Reg. \$ 3.55 each for... \$ 3.20
Reg. \$ 4.80 each for... \$ 4.32
Reg. \$ 5.20 each for... \$ 4.60
Reg. \$ 6.80 each for... \$ 6.12
Reg. \$ 7.35 each for... \$ 6.62
Reg. \$ 9.60 each for... \$ 8.64
Reg. \$10.30 each for... \$ 9.27
Reg. \$13.60 each for... \$12.24
COTTON BLANKETS
Fleecy Grey and White Cotton with Blue and Pink Borders. Size 50 x 72. Reg. \$2.55 pair for... \$2.30
Size 60 x 70. Reg. \$3.15 pair for... \$2.84
Size 66 x 74. Reg. \$3.20 pair for... \$2.88
PART WOOL BLANKETS
Size 50 x 70. Special per pair... \$5.20
Size 54 x 70. Special per pair... 6.45
Size 60 x 78. Special per pair... 7.75
Size 66 x 88. Special per pair... 9.00
Size 70 x 88. Special per pair... 10.30
ALL WOOL BLANKETS
Size 54 x 70. Special per pair... \$ 7.75
Size 60 x 78. Special per pair... 9.30
Size 66 x 88. Special per pair... 10.85
Size 70 x 88. Special per pair... 12.45
Size 75 x 90. Special per pair... 15.45

THE ROYAL STORES, LTD.

Trinity College of Music

PRACTICAL EXAMINATION, 1922.

SENIOR:
Eileen Mews, St. Edward's Convent, Bell Island.

THEORY EXAMINATION (In Order of Merit) LICENTNATE AND ASSOCIATE:
Evedyn M. Rabbitts, Convent, Brigus.
ADVANCED INTERMEDIATE:
Pass.
Bessie O'Neill Prim, Mercy Convent Academy, Military Road.
Mary A. Burke, Convent of Mercy, Brigus.

INTERMEDIATE:
Honours.
Mary Collins, Convent, Placentia.
Madeline Mansfield, Convent, Placentia.
Pass.
Agnes Armstrong, Mercy Convent Academy, Military Road.
Anna Gaultois, Convent, St. George's.
Mabel W. Chafe, Mercy Convent Academy, Military Road.
Marie Norris, Mercy Convent Academy, Military Road.
Josephine Kennedy, Mercy Convent Academy, Military Road.

JUNIOR:
Honours.
Mary Organ, Mercy Convent Academy, Military Road.
Margaret C. Smith, Convent of Mercy, St. George's.
Florence B. Smith, Convent of Mercy, St. George's.
Annie Adams, Convent of Mercy, Brigus.
Genevieve O'Brien, St. Bride's College, Littlefield.
Mabel Pynn, Convent of Mercy, St. George's.
Mary K. Murray, St. Bride's College, Littlefield.
Margaret M. Casey, St. Bride's College, Littlefield.
Dick McGrath, Mercy Convent Academy, Military Road.
Pass.
Mary Carey, Mercy Convent Academy, Military Road.
Aileen Fowler, Convent of Mercy, Brigus.
Maisie Shea, Convent of Mercy, Brigus.
Madge M. Hodge, St. Bride's College, Littlefield.
Lillian Kennedy, Convent of Mercy, Brigus.

PREPARATORY:
Honours.
Eleanor Badcock, Convent, Carleton Place.
Ethel Le Shane, Mercy Convent, Military Road.
Eileen FitzPatrick, St. Bride's College, Littlefield.
Pass.
Ruth Jerrett, Convent, Brigus.
Alice A. Chick, St. Bride's College, Littlefield.
Francis Gaultois, Convent, St. George's.

Prevented Forest Fire

While shooting over the bars near Cochrane Pond on Wednesday last, Messrs. Harvey McNeil and Morris were instrumental in preventing what threatened to be a serious forest fire. The fire had started near Thomas Pond and was making rapid headway when its progress was arrested with the help of others who happened to be in the vicinity. A party worked from 11 a.m. to 8 p.m. before the blaze was finally put and the thick woods in the vicinity saved from destruction. The men were fatigued after their work. Messrs. Morris and McNeil had their boots destroyed while combating flames.

OBITUARY

STEPHEN MAHER.

There passed peacefully away Tuesday, September 26th, after a long illness, a respected resident of Harbour in the person of Mr. Stephen Maher at the ripe old age of eighty. Mr. Maher was one of the oldest planters of that place and some of the older generation will remember for many years sailing as mate on the watch with the late Captain A. J. Jackman. He was also one of the oldest members of the Star of the Sea Society, and is survived by his sister, Miss Norah Maher, and his nieces of this city, Mrs. D. O'Connell and Miss B. Hurley. His funeral will take place on Thursday and was attended by friends from the city.

C.M.B.C. Meetings Will Begin Next Sunday

A meeting of the General Conference of the C.M.B.C. was held at the St. E. Clergy House last evening, under the Brinton presiding. All last year's business was cleaned up and arrangements formulated for a very successful coming year. A splendid lecture has been drawn up for the opening day of the class for tomorrow week. Holy Communion will be celebrated at the Cathedral at 8 a.m. and the regular Class Meeting will be held at 2 p.m. when the and Girl Guides will also attend.