



## FAIRBANKS VALVES

Will appeal to the discerning buyer. They are widely known and popular among all Engineers and deservedly so. In design they are simple, in construction and composition only the finest workmanship and best grade bronze have been used. They are heavily built and well proportioned, being fully capable of standing rough treatment and any pressure up to that specified for each valve.

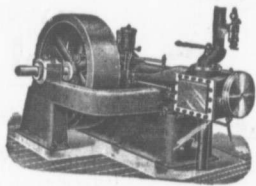
We Shall Appreciate  
Your Further Enquiries.

**The Canadian Fairbanks-Morse Co.,  
LIMITED.**

FAIRBANKS STANDARD SCALES, SAFES AND  
VAULTS.

FAIRBANKS-MORSE GAS ENGINES.  
St. John, N. B.

## Bearings in Line.

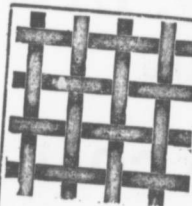


In sizes up to 135 horse power, the outboard bearing of our side crank engines is connected to the frame by a wing, keeping the bearings perfectly in line.

These engines are built on the interchangeable system and duplicate parts are kept in stock, ready for shipment on receipt of order.

They have our latest improved governor and oiling system and are strictly high class in every respect.

**ROBB ENGINEERING COMPANY, L't'd,**  
AMHERST, N. S.



Manufacturers  
of  
**Wire Cloth**  
and  
**COAL SCREENS**  
in all Strengths.  
Double Crimped  
Process.

WE SPECIALIZE IN  
ORNAMENTAL IRON AND WIRE WORK.  
**Jail and Prison Construction.**  
"Have you an Up-to-Date Lock-Up in your District."  
**CANADA WIRE GOODS MFG. CO.**  
HAMILTON.

Used by Collieries in Lancashire, Staffordshire & Yorkshire

**'XTERRA'** COLLIERY LAMP OIL  
For Marsuit, Muesle, Deflector or Closed Lamp;  
PURE WHITE FLAME. LOW PRICE.  
**E. WOLASTON, Dutton St. MANCHESTER**  
Sole Representatives for Canada, AUSTEN, BROS.,  
Halifax, N. S.

**INTERCOLONIAL  
RAILWAY**

**STELLARTON**

TO

**MONTREAL**

**\$14.00**

Going Sept. 14, 15, 16, Returning Oct. 2, 1911  
Going Sept. 28, 29, 30, " " Oct. 16, 1911

Choice of Two Trains:  
**Ocean Limited,**  
**Maritime Express.**