

JOHN HALLAM,83 & 85 Front St. East, - - - Toronto,
and

88 Princess Street, - - - - - Winnipeg

Wholesale Dealer in

DOMESTIC AND FOREIGN WOOLS

Sumac, Japonica, &c.

LONG & BISBY

DEALERS IN

Foreign and Domestic

WOOL AND COTTON

GENERAL COMMISSION MERCHANTS

HAMILTON, ONT.**A. T. PATERSON & CO.**Importers of **Foreign Wools**

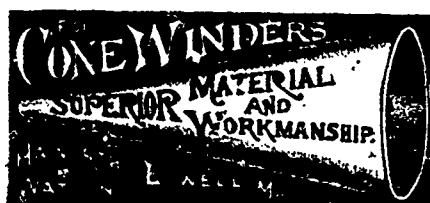
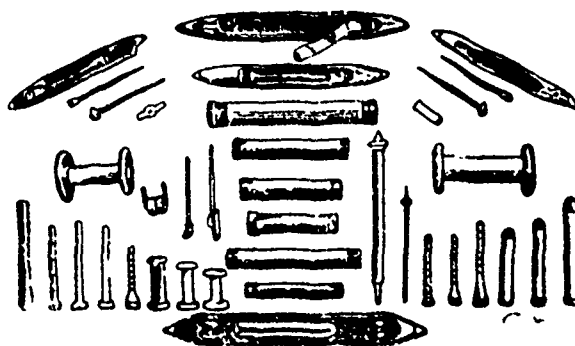
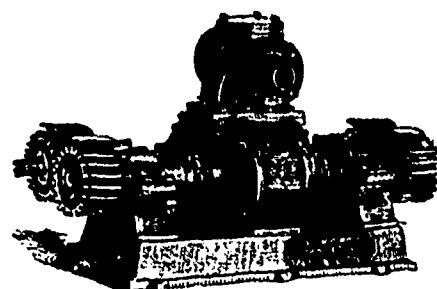
35 St. Francois Xavier St.

MONTREAL, Canada**THE SMITH WOOLSTOCK CO.**Manufacturers and Dealers in all Lines of
Wool Stock, Shoddies, &c., Graded Woolen
Rags, Carbonizing and Neutralizing.Best prices paid for Wool Pickings, Woolen
and Cotton Rags, Metals, &c. Hard Waste, &c.,
purchased or worked up and returned.

219 Front St. E., Toronto | Foot of Ontario St

ROBT. S. FRASER**Wools, Cottons, Nolls, Yarns**

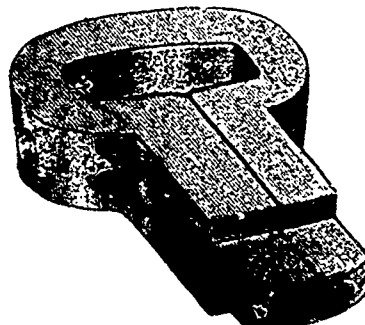
Specialties:

*English Pick Lambs and Downs**Foreign Wools and Nolls**Egyptian and Peruvian Cottons**Fancy Yarns*3 St. Helen St., **MONTREAL****WM. D. CAMERON,****Woolen & Cotton Manufacturers'**
*Agent,***HALIFAX, N.S., & ST. JOHN, N.B.**Address P.O. Box 401. - **HALIFAX, N.S.****Lachute Shuttle and Bobbin Works**We are the largest Shuttle
Manufacturers in CanadaSlubbing, Roving and all kinds
of Bobbins and Spools for
Cotton and Woolen MillsWe have always on hand
a large stock of
Thoroughly Seasoned
Lumber.Orders solicited and all work guar-
anteed to give satisfaction.**JOHN HOPE & CO.****LACHUTE, P.Q.****MISSISSIPPI IRON WORKS**ESTABLISHED
1875Manufacturers of English or American Fulling Mills and Washers, Wool Pickers, Ex-
haust Fan Drivers, Dusters, Rotary Force Pumps for Fire Duty, Boiler Feed Pumps,
Shafting, Hangers, Castings, Pulleys, Gearing, Forgings.

Full equipment of mills of every kind.

YOUNG BROS., Almonte, Ont.**HAWORTH & WATSON****COP
TUBES**PAPER COP TUBES FOR MULE SPINNING.
LARGE PAPER TUBES FOR USE ON BOBBINS
FULL LENGTH TAPERED TUBES.
PAPER TUBES SILK MANUFACTURERS
PAPER CONES & TUBES FOR CONE WINDERS.
LOWELL, MASS.**WILLIAM CRABB & CO.**

Manufacturers of all kinds of

**Hackle, Gill, Comb and Card Pins, Picker Teeth, Needle
Pointed Card Clothing in Wood and Leather for
Flax, Jute, Tow, etc.**Hackles, Gills and Wool Combs made and repaired, also Rope Makers' Pins, Picker Pins, Special
Springs, Loom and Shuttle Springs, English Cast-Steel Wire, Cotton Banding and General Mill Furnishings**Bloomfield Avenue and Morris Canal, NEWARK, N. J.****JOHN W. BARLOW**

Manufacturer of

LOOM PICKERS,**LAWRENCE, MASS.**This cut represents Barlow's Pat. Bow Picker
with solid interlocking foot. Pat. Feb. 26, 1889