

**AN ENGINE** possessing the qualities of Economy, Simplicity, Quick and Even Regulation, Easy to Operate, Needing Few Repairs is the kind required by steam plant operators. These essentials are embodied in the WHEELLOCK and IDEAL STEAM ENGINES made by

**WE MAKE** Wheellock Engines, Ideal Engines, Gas and Gasoline Engines, Boilers, Water Wheels, Pumps, Flour Mill Machinery, Oat Meal Mill Machinery, Oat Meal Steam Pan Kilns, Wood Working Machinery, Iron Pulleys, Wood Rim Split Pulleys, Shafts, Hangers, Gearing, Friction, Clutch Pulleys, Friction Clutch Couplings, etc., Safes, Vaults and Vault Doors.

**THE GOLDIE & McCULLOCH CO., Limited**  
GALT, Ont., Canada.

**LEONARD - CORLISS Engines**

For all power purposes.

The **CORLISS ENGINE** is without question the most economical. Universally acknowledged as the peer of all slow speed engines. All Engines have multiported valves.

The **PEERLESS Self Oiling ENGINE** is the most perfect high speed engine in existence, there is nothing about the engine which has not been a proved success.

**Boilers** for all powers and purposes **Heaters, Pumps.**  
CORRESPONDENCE SOLICITED.

**E. LEONARD & SONS, - Manufacturers**  
London, Canada

Montreal, P.Q. Winnipeg, Man. St. John, N.B.

**THE WELLINGTON MILLS**  
London, England.

**GENUINE EMERY**

Oakey's Flexible Twilled Emery Cloth.  
Oakey's Flint Paper and Glass Paper  
Oakey's Emery Paper, Black Lead, Etc.  
Prize Medal and Highest Award Philadelphia, 1876, for Superiority of Quality, Skilful Manufacture, Sharpness, Durability, and Uniformity of Grain.

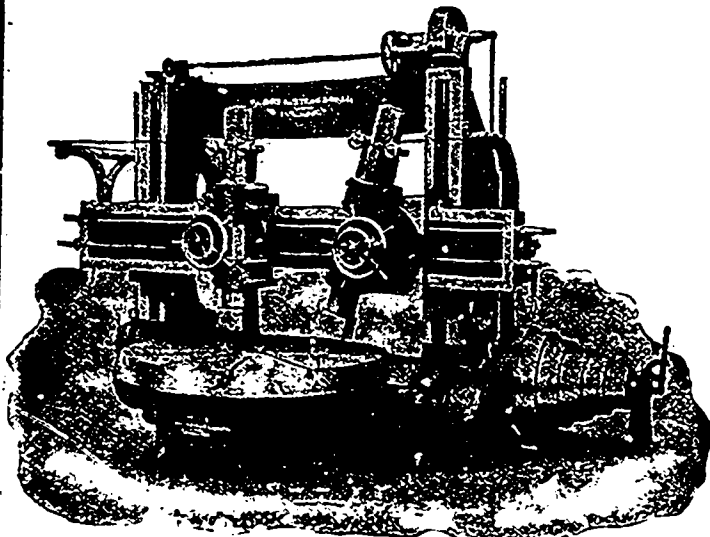
Manufacturers

**JOHN OAKEY & SONS, Limited,** Wellington Mills, Westminster  
Bridge Road, London, Eng.

Enquiries should be addressed to

**JOHN FORMAN,** - 650 Craig St., MONTREAL

**IMPORTANT BORING and TURNING MILLS**  
TO USERS OF



**NOTICE**—The above mill can be seen at our Works and is of the latest modern type. If you are a buyer please communicate with us. Instant delivery can be given. Full particulars sent on receipt of wire or letter.

WE are ready to delivery from STOCK one of our 84" boring and Turning Mills, having two regular heads with positive geared feeds, each head being entirely independent in all its movements, making it adaptable to either light or heavy work within its range. Every part of the machine is manufactured after the most approved methods, and in placing a tool of this kind in your shop you are getting a machine suitable for your wants if you wish to make the most of your boring mill work. A greater range of work can be done on a mill of this character than any other kind of tool, so that the floor space occupied by Bertram mills always pays dividends.

**THE JOHN BERTRAM & SONS CO., Limited, - Dundas, Ontario**