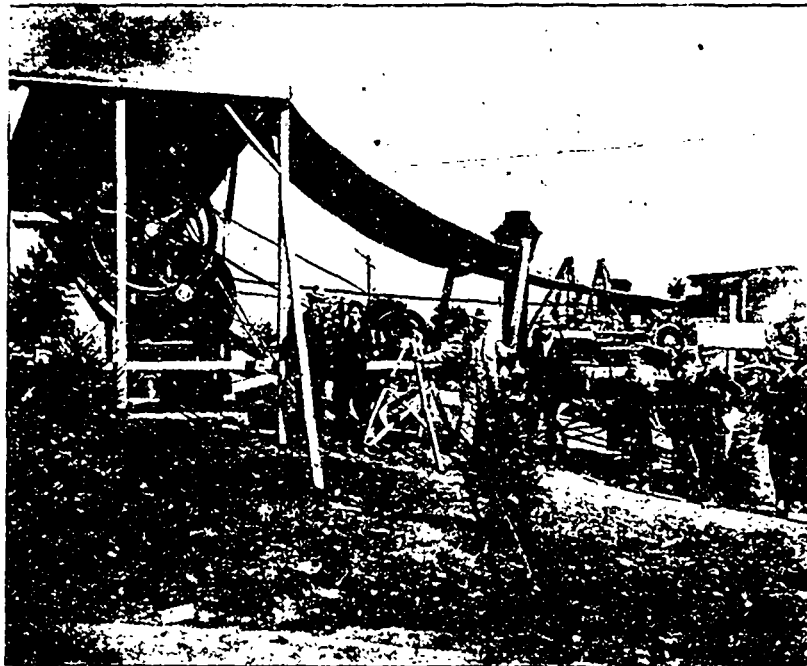


a test. Mr. Thomas Clark, Mechanical Engineer and Manager of the Stratford Waterworks, conducted the test and his report is reproduced:

TEST OF PEAT FUEL obtained from Township of Ellice, made at Stratford Water Works plant, September 28, 1898:

No. 1 boiler, coal fire was drawn at 3 p.m., two pine slabs thrown on grates served to kindle peat fuel. No. 2 boiler was treated similarly, but no kindling was used, the peat fuel ignited from the hot bars. The steam gauge registered 47 lbs. In thirteen minutes the steam rose to 60 lbs. and was held remarkably steady throughout the test. The water level of boiler averaged four inches. Temperature of feed water, 170 degrees. Reading of vacuum gauge, temperature of feed water and pressure of water gauge was taken every hour. Peat fuel consumed per hour, 310 lbs. Water pumped per hour, 31,005 imperial gallons. Ash and unconsumed peat, 7.5 per cent. I have no hesitation in saying that fully fifteen per cent. of the peat fuel was lost owing to the excessive distance from grates to boiler. Had I known the nature of this fuel I should



Peat Fuel Exhibit at Industrial Fair, Toronto, 1898.

have recommended the raising of the grates fully seven inches, a much finer grate bar and an automatic damper.

TRIAL OF SELECTED REYNOLDSVILLE COAL, September 29, 1898:

No. 1 boiler was drawn at 3 p.m., 50 lbs. of pine served to kindle. No. 2 boiler was treated similarly: 50 lbs. of pine served to kindle. The steam gauge registered 52 lbs. The water level of boiler averaged four inches. Temperature of feed water, 170 degrees. Reading of vacuum gauge, temperature of feed water, and pressure of water gauge was taken every half hour. Coal consumed per hour, 300 lbs. Water pumped per hour, 30,080 imperial gallons. Ash, 8.9 per cent.

(Signed) THOMAS CLARK,

Mechanical Engineer and Manager Stratford Water Works.

Test at the Metropolitan Street Railway Power House, North Toronto, with Welland Peat:

The report of the experts in charge concluded with the statement: "That the thermal value of 100 lbs. of peat is equal to 91.15 lbs. of Reynoldsville Mine Run coal of excellent quality."