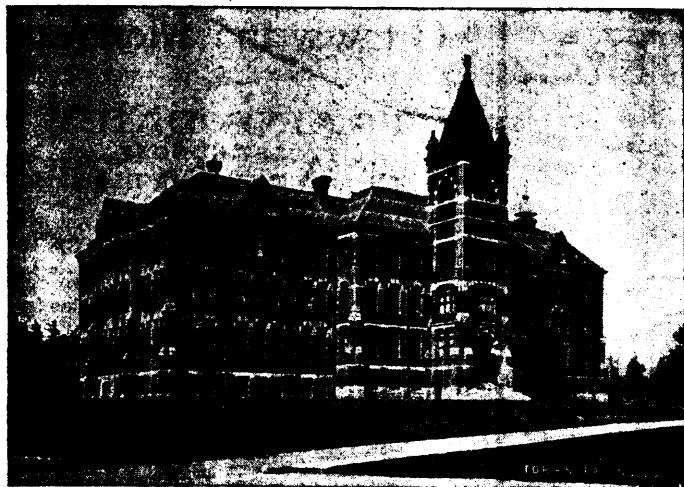


School of Practical Science, Toronto

ESTABLISHED 1878.

AFFILIATED TO THE UNIVERSITY OF TORONTO.



This School is equipped and supported entirely by the Province of Ontario and gives instruction in the following departments:

- 1—CIVIL ENGINEERING
- 2—MINING ENGINEERING
- 3—MECHANICAL & ELECTRICAL ENGINEERING
- 4—ARCHITECTURE
- 5—ANALYTICAL AND APPLIED CHEMISTRY

Special Attention is directed to the Facilities possessed by the School for giving Instruction in Mining Engineering. Practical Instruction is given in Drawing and Surveying, and in the following Laboratories:

- | | | |
|------------|----------------|--------------|
| 1—CHEMICAL | 3—MILLING | 6—ELECTRICAL |
| 2—ASSAYING | 4—STEAM | 7—TESTING |
| | 5—METROLOGICAL | |

The School also has good collections of Minerals, Rocks and Fossils. Special Students will be received as well as those taking regular courses.

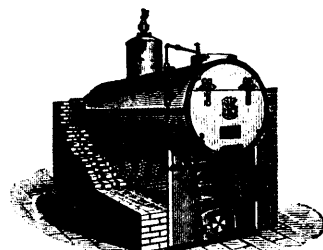
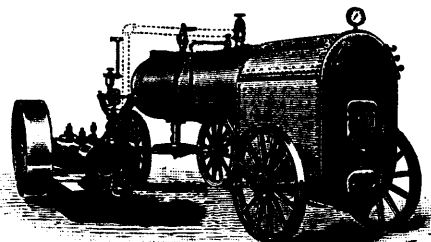
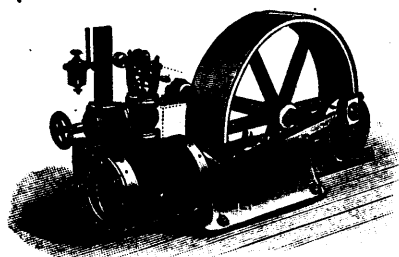
FOR FULL INFORMATION SEE CALENDAR.

L. B. STEWART, Secretary.

E. Leonard & Sons, London, Ontario

MONTREAL, QUE.

ST. JOHN, N.B.



MANUFACTURERS OF

ENGINES AND BOILERS IN LARGE VARIETIES.

Send for Quotations on any size from 3 H.P. to 250 H.P.

Send for new Catalogue mentioning this Paper.

Chemical and Assay Apparatus



NEW ILLUSTRATED CATALOGUE JUST ISSUED, SEND FOR A COPY.

COMPLETE ASSAY OUTFITS.

THE HAMILTON-MERRITT PROSPECTOR'S OUTFITS.

Becker's Balances and Weights.

Battersea Crucibles and Muffles.

Hoskins' Gasoline Furnaces.

Kavaher's Bohemian Glassware.

Munktel's Swedish Filters.

Lyman, Sons & Company

380, 382, 384, and 386 ST. PAUL STREET,
MONTREAL.

R. T. Hopper & Co.

SUCCESSORS TO IRWIN, HOPPER AND CO.

ESTABLISHED 1878.

MINERS AND SHIPPERS OF MINERALS, ETC.

31 Board of Trade Building, MONTREAL, Can.

Asbestos, Crude and Manufactured, Mica, Plumbago, Soapstone, Etc.

Also MANAGING DIRECTORS AND
SELLING AGENTS FOR

The Anglo-Canadian Asbestos Company, Ltd.

Loughboro Mica Mining Company, Ltd.

The English Portland Cement Company, Ltd.

Montreal and Kootenay Mining Company, Ltd.

Johnson's Company, Ltd.

Miners of Crude Asbestos.

The output per annum of Asbestos from these mines, in addition to being the largest, not only in Canada, but in any part of the world, is unsurpassed both in quality and length of fibre. The facilities for shipping the crude ore are most advantageous, the properties being situated alongside the railway, thereby enabling all orders to be filled promptly.

Mines at Thetford Station, Quebec Central Railway.