



## Cobalt Up-to-Date

Cobalt to be up-to-date must have the latest and best systems of accounting. These only can be had in the Loose-Leaf Systems. Mining Companies desiring

### Minute Books Share Registers

Or any books for Joint Stock Companies, will do well to consult us.

### Time Sheets Working Records

And all classes of special ruled sheets for Mining Camps. Up-to-the-hour Systems for the Wholesaler, Retailer, Manufacturer or Financial Corporation.

Write us for further information

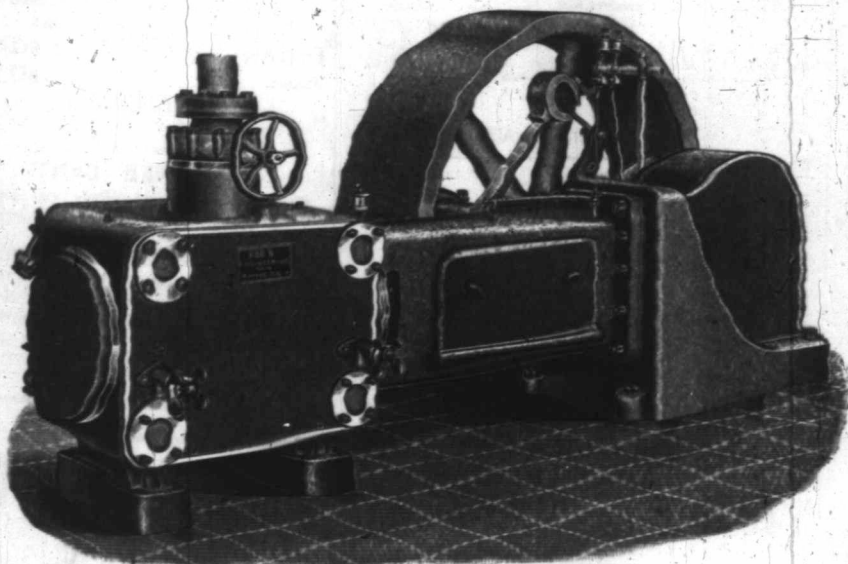
*THE* **Rolla L. Crain Co**  
LIMITED.  
OTTAWA, CANADA

TORONTO, 18 Toronto St.

MONTREAL, 74 Alliance Building.

WINNIPEG.

## Our Corliss Engines



Are fitted with Robb-Armstrong Corliss valve gear, which has the following good points:—

**POSITIVELY DRIVEN  
ENCASED IN OIL  
RUNS NOISELESSLY  
MINIMUM FRICTION  
MINIMUM WEAR**

**ROBB ENGINEERING CO., LIMITED, AMHERST, N.S.**

DISTRICT OFFICES | 320 Ossington Avenue, Toronto; Wm. McKay, Manager.  
Bell Telephone Building, Montreal; Watson Jack, Manager.  
355 Carlton Street, Winnipeg; J. F. Porter, Manager.