

CONCRETE MIXERS.

The Gould, Shapley & Muir Company, Limited, Brantford, Ont., exhibited at the Toronto Industrial Exhibition the "Ideal" automatic concrete mixer, which they are now manufacturing in Canada under patent rights secured from the Buffalo Concrete Mixer Company. It is claimed that this mixer will automatically measure the proper amount of cement with a given quantity of gravel and also automatically insert sufficient water inside of the machine to properly wet the mixture to any desired consistency. It is mounted on a steel truck and can be readily moved from place to place.

Messrs. Gutteridge & McConnell, of Hamiota, Man., also exhibited an automatic cement concrete mixer, for which they claim a capacity of upwards of 60 yards a day. It is understood that they have disposed of the right to manufacture this machine in Western Canada. They also showed a concrete building block machine.

SAMSON CEMENT

MANUFACTURED BY

THE OWEN SOUND PORTLAND CEMENT COMPANY, LIMITED
Owen Sound, Ont.

Works at **SHALLOW LAKE, ONT.**

Write us for prices

The ALGOMA STEEL COMPANY, Limited
Sault Ste Marie, Ont.

Is now booking orders for

STEEL RAILS

For late Summer 1905, and Early Spring 1906 Delivery.
Parties intending purchasing will find it to their interest to let us have their specifications at an early date so as to ensure desired deliveries.

Drummond, McCall & Co.,

OFFICE: Canada Life Building, MONTREAL

GENERAL SALES AGENTS

One Grade**"The Cement of Quality"****The Highest****NATIONAL PORTLAND CEMENT**

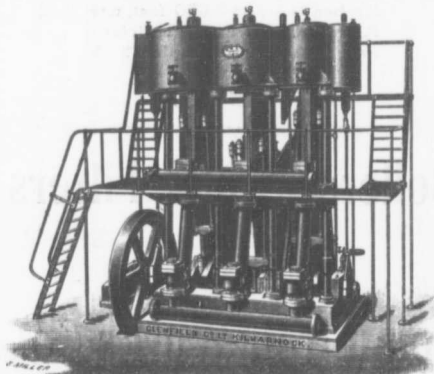
Acknowledged by competent Architects and Engineers to be unequalled for fineness, wonderful development of strength and sand carrying capacity.

THE BEST IS THE CHEAPEST

The National Portland Cement Company
Limited

Toronto Sales Office: 22 James Building

Head Office and Mills: DURHAM, ONTARIO

Glenfield & Kennedy, Limited**KILMARNOCK**

Sluice Valves, Air Valves, Relief Valves, Hydrants
Stand-Posts

AND ALL CLASSES OF WATER FITTINGS

Accumulators, Pumps, Hydraulic Machinery**Penstocks, Flushers, Sewerage Fittings****KENNEDY'S PATENT WATER METERS.** Over 165,000 in use.**ASHLEY'S PATENT DEEP-WELL PUMPS**

Canadian Representative **John T. Farmer,**
Coristine Building, Montreal