

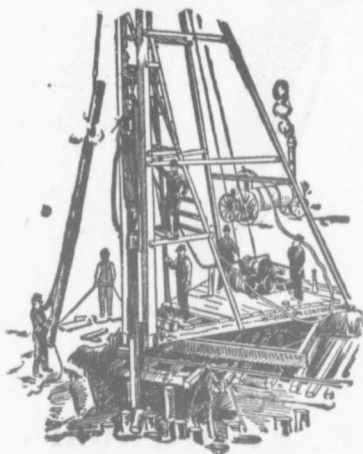
The Canadian Bridge Co., Limited

WALKERVILLE, ONT.

MANUFACTURERS OF

RAILWAY AND HIGHWAY BRIDGES

Locomotive Turn Tables,
Roofs, Steel Buildings and
Structural Iron Work of all descriptions



PILE DRIVING

on land or water by Steam Pile Drivers or Drop Hammers.

Portable Boilers
Hoisting Engines
Pumping Machinery

TO LET

Bridge Building, Trestle Work, Wharves,
Dams, Diving Submarine Work and
General Contracting.

WM. HOOD & SON
10 Richmond Sq. - MONTREAL

The Ontario Accident Insurance Co.

ACCIDENT, EMPLOYERS, ELEVATOR
AND GENERAL LIABILITY

104 St. Francois Xavier St. Montreal

CONTRACTORS

If you want One Man or One Hundred Men
for labor of any description, apply to the
Manitoba Employment Co.

R. J. HANNA, MANAGER.
670 1/2 Main Street, Winnipeg, Man.
The Leading Labor Bureau in the Northwest
TELEPHONE 3549

HEADQUARTERS FOR

Pig Lead, Pig Tin, Solder,
and Manganese Anti-
Friction Babbitt Metal.

Syracuse Smelting Works
Montreal, Que.

M. BEATTY & SONS

WELLAND, ONT.

Dredges, Ditchers, Derricks and
Steam Shovels
of various styles and sizes to
suit any work.

Submarine Rock Drilling Machinery
Hoisting Engines, Suspension Cableways,
Horse-Power Hoisters, Gang Stone Saws
Centrifugal Pumps for Water, Sand and
Gold Mining, and other Contractors' Plant.

Please mention this paper when corres-
ponding with advertisers.



PILE DRIVING

and Foundation Work.

By 5-ton Automatic Steam Pile Hammer,
Water Jet or Drop Hammers, Dock Build-
ing, Submarine Work and Dredging.

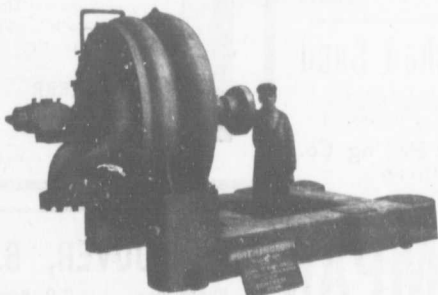
BUILDING MOVER AND WRECKER

General Contracting.

JNO. E. RUSSELL, - Toronto
908 Queen St. E.—Phone M. 2007.

WORTHINGTON PUMPS

FOR WATER WORKS SERVICES



Worthington 2 Stage Turbine Pump for the Winnipeg
Water Works, Capacity 5,000,000 per 24 hours.

We Have Two Stage Pumps in Operation Delivering Against 160 Pounds Pressure

"WORTHINGTON" TURBINE PUMPS

for heads up to 2,000 feet, are
Reliable, Durable, Efficient
and exceedingly simple ? ?

WE ALSO MANUFACTURE

Boilers, Tanks, Filters
Etc.

The John McDougall Caledonian Iron Works Co.,

ESTABLISHED 1832

Montreal.

Limited.