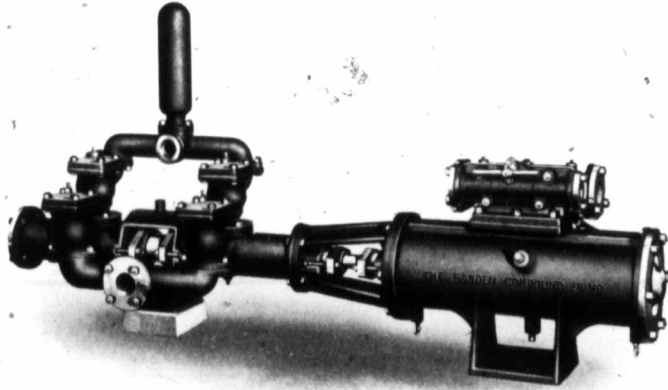


Test of a Bawden Compound Outside Packed Steam Pump



THE above is a cut of a 5 & 9 & 4 x 10 Bawden Compound Outside-Packed, Pot-Valve, Boiler-Feed Pump built for The Parkers Dye Works here. A test made for engineers and those interested in the pump proved conclusively that the pump has many advantages over pumps operated by the old style valve movement. The pump started on 8 lbs. of steam and with 40 lbs. steam gave 160 lbs. pressure on the water end. There was a steady flow of water at all pressures, and the pump made a full even stroke at all speeds even below a speed of 3 feet a minute, and there was practically no vibration at any speed.

The exhaust and suction pipes on the water end were disconnected so that the water end was running absolutely light. The steam was then turned on full and the pump made the same even stroke with no bang whatever, proving a perfect cushioning of all valves and pistons. The cut off at each end of the stroke was sharp and clean.

The Bawden Patent Compound Steam Pump has no rival for simplicity, economy, compactness and reliability.

Simple—Because it has a less number of moving parts than any other compound steam pump. All outside valve levers, tappets, springs, rock shafts, and cross heads are dispensed with, consequently a short stretcher replaces the long one used on other makers' designs—one double-ported slide valve distributes the high and low pressure steam, and a double-headed trunk piston forms the high and low pressure area in one cylinder.

Economical—Because the steam is compounded in one cylinder casting, without the aid of external exhaust pipes, the low pressure areas are superheated with live steam at every stroke which evaporates the condensation otherwise wasted in two cylinder compound systems.

Compact—Because the floor space required is less than any other compound pump of same capacity and stroke. The Bawden system dispenses with one stretcher, one cylinder and steam chest, valve rod, slide valve and four packing glands.

Reliable—Because the balanced piston valves are moved by the action of live steam only and are perfectly independent of any adjustment whatever. They are equally sensitive to high or low pressure steam, will start without handling and cannot remain on centre.

The Bawden Machine Co., Limited

Sterling Road - Toronto