

"FLEUR DE LIS"



Galvanized Iron

Works Well and Wears Well

JOHN LYSAGHT, LIMITED
Makers, Bristol

A. G. LESLIE & CO., LTD.
Montreal

10

Zinc.—The tone is easy, at 5½ to 6c.

CAMP SUPPLIES.

Beans.—Prime pea beans, \$2 to \$2.25 per bushel.
Butter.—Fresh made creamery, 25 to 26c.
Canned Goods.—Per Dozen.—Corn, 80 to 85; peas, \$1.05 to \$1.15; beans, 85c.; tomatoes, 85 to 90c.; peaches, 25, \$1.65, and 35, \$2.65; pears, 25, \$1.60, and 35, \$2.30; salmon, best brands, 1-lb. tins, \$1.87½, and flats, \$2.02½; cheaper grades, 95c. to \$1.65.
Cheese.—The market ranges from 11c. to 11½c., covering all Canadian makes.
Coffee.—Mocha, 20 to 25c.; Santos, 15 to 18c.; Rio, 10 to 12c.
Dried Fruits.—Currants, Filiatras, 5½ to 6½c.; choice, 8 to 9c.; dates, 4 to 5c.; raisins, Valentias, 5 to 6½c.; California, seeded, 7½ to 9c.; Evaporated apples, prime, 8 to 8½c.
Eggs.—New laid, 20 to 22c.
Flour.—Manitoba, 1st patents, \$5.60 per barrel; 2nd patents, \$5.10; strong bakers, \$4.90.
Molasses and Syrup.—Molasses, New Orleans, 27 to 28c.; Barbadoes, 40 to 45c.; Porto Rico, 40 to 43c.; syrup, barrels, 3½c.; 2-lb. tins, 2 dozen to case, \$2.50 per case.
Potatoes.—Per 90 lbs., good quality, 45 to 50c.
Rice and Tapioca.—Rice, grade B., in 100-lb. bags, \$2.75 to \$2.80; C.C., \$2.65. Tapioca, medium pearl, 5½ to 6c.
Rolled Oats.—Oatmeal, \$2.20 per bag; rolled oats, \$2, bags.
Sugar.—Granulated, bags, \$5.05; yellow, \$4.65 to \$5. Barrels 5c. above bag prices.
Tea.—Japans, 20 to 38c.; Ceylons, 20 to 40c.; Ceylon, greens, 19 to 25c.; China, green, 20 to 50c.; low-grades, down to 15c.
Fish.—Salted.—Medium cod, \$7 per bbl.; herring, \$5.25 per bbl.; salmon, \$15.50 per bbl. for red, and \$14 for pink. Smoked fish.—Bloaters, \$1.10 per large box; haddies, 7½c. per lb.; kippered herring, per box, \$1.20 to 1.25.
Provisions.—Salt Pork.—\$27 to \$34 per bbl.; beef, \$18 per bbl.; smoked hams, 16 to 20c. per lb.; lard, 16½ to 17½c. for pure, and 12½ to 14c. per lb. for compound.

* * * *

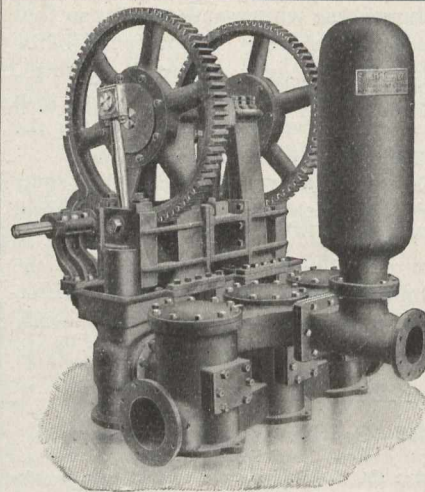
Toronto, June 23rd, 1910.

The most noticeable item to-day is in the camp supplies' department. Prices of flour are advanced 25c. per barrel. This is caused by an advance in the Chicago and Winnipeg wheat markets of 7 and 6 cents per bushel respectively, the impelling idea being the drought in the American and Canadian West. This advance may or may not last. Pork and salt meats are easier.

Very marked activity has developed in lumber during the fortnight; large bills of hemlock as well as pine have been sold, and the demand continues. The ingot metals are easy; pig-iron steady under a moderate demand, sheet steel moving briskly.

The following are wholesale prices for Toronto, where not otherwise explained, although for broken quantities higher prices are quoted:

Antimony.—Trade is quiet, market easier at \$8.50.
Axes.—Standard makes, double bitted, \$8 to \$10; single bitted, per dozen, \$7 to \$9.
Bar Iron.—\$2.00 to \$2.10, base, per 100 lbs., from stock to wholesale dealer. Free movement.
Bar Mild Steel.—Per 100 lbs., \$2.10 to \$2.20.
Boiler Plates.—½-inch and heavier, \$2.20. Boiler heads 25c. per 100 pounds advance on plate. Tank plate, 3-16-inch, \$2.40 per 100 pounds.
Boiler Tubes.—Orders continue active. Lap-welded, steel, 1¼-inch, 10c.; 1½-inch, 9c. per 10 foot; 2-inch, \$8.50; 2¼-inch, \$10; 2½-inch, \$10.60; 3-inch, \$11 to \$11.50; 3½-inch, \$18 to \$18.50; 4-inch, \$19 to \$20 per 100 feet.
Building Paper.—Plain, 27c. per roll; tarred, 35c. per roll. Demand is moderate.
Bricks.—In active movement, with very firm tone. Price at some yards \$9 to \$0.50, at others, \$0.50 to \$10 for common. Don Valley pressed brick are in request. Red and buff pressed are worth \$18 delivered and \$17 at works per 1,000.
Broken Stone.—Lime stone, good hard, for roadways or concrete, f.o.b. Schaw station, C.P.R., 75c. until further notice, per ton of 2,000 lbs., 1-inch, 2-inch, or larger, price all the same. Rubble stone, 55c. per ton, Schaw station, and a good deal moving. Broken granite is selling at \$3 per ton for good Oshawa.
Cement.—Car lots, \$1.75 per barrel, without bags. In 1,000 barrel lots \$1.60. In smaller parcels \$1.90 is asked by city dealers. Bags, 40c. extra. Demand good.
Coal.—The price of anthracite still remains at \$6.50 per ton, net, and pea coal at \$5.75; but as the usual monthly advances have been made at the mines, a higher figure may be anticipated in the near future. From these prices a discount of 25 cents per ton can be had on considerable lots. In the United States there is an



We Manufacture
Power and
Steam Pumps,
Condensers,
Travelling
Cranes, etc.

Write for our
Catalogue

The Smart-Turner Machine Co., Ltd.

HAMILTON - - - - CANADA

open market for bituminous coal and a great number of qualities exist. We quote: Youghiogheny lump coal on cars here, \$3.75 to \$3.80; mine run, \$3.65 to \$3.70; slack, \$2.75 to \$2.85; lump coal from other districts, \$3.55 to \$3.70; mine run 10c. less; slack, \$2.60 to \$2.70; cannel coal plentiful at \$7.50 per ton; cook, Solvey foundry, which is largely used here, quotes at from \$5.75 to \$6.00; Reynoldsville, \$4.90 to \$5.10; Connellsville, 72-hour coke, \$5.25.

Copper Ingot.—A very large volume of business is being done, but the market is weaker at \$13.50 to \$13.75. Production goes on at a rapid rate.

Detonator Caps.—75c. to \$1 per 100; case lots, 75c. per 100; broken quantities, \$1.

Dynamite. per pound, 21 to 25c., as to quantity.
Felt Roofing.—The spring trade has opened very well at an unchanged price, which is \$1.80 per 100 lbs.

Fire Bricks.—English and Scotch, \$30 to \$35; American, \$25 to \$35 per 1,000. Fire clay, \$8 to \$12 per ton.

Fuses.—Electric Blasting.—Double strength 4 feet, \$4.50; 6 feet, \$5; 8 feet, \$5.50; 10 feet, \$6. Single strength, 4 feet, \$3.50; 6 feet, \$4; 8 feet, \$4.50; 10 feet, \$5, per 100 count. Bennett's double tape fuse, \$6 per 1,000 feet.

Iron Chain.—¼-inch, \$5.75; 5-16-inch, \$5.15; ¾-inch, \$4.15; 7-16-inch, \$3.95; 1-inch, \$3.75; 9-16-inch, \$3.70; 3/8-inch, \$3.55; 1/2-inch, \$3.45; 5/8-inch, \$3.40; 1-inch, \$3.40, per 100 lbs.

Iron Pipe.—A steady request at former prices:—Black, ¼-inch, \$2.03; 3/8-inch, \$2.25; ½-inch, \$2.63; ¾-inch, \$3.28; 1-inch, \$4.70; 1¼-inch, \$6.41; 1½-inch, \$7.70; 2-inch, \$10.26; 2½-inch, \$16.39; 3-inch, \$21.52; 3½-inch, 27.08; 4-inch, \$30.78; 4½-inch, \$35.75; 5-inch, \$39.85; 6-inch, \$51.70. Galvanized, ¼-inch, \$2.86; 3/8-inch, \$3.08; ½-inch, \$3.48; 5/8-inch, \$4.43; 1-inch, \$6.12; 1¼-inch, \$8.66; 1½-inch, \$10.40; 2-inch, \$13.86, per 100 feet.

Pig Iron.—We quote Clarence at \$20.50, for No. 3; Cleveland, \$20.50; Summerlee, \$22; Hamilton quotes a little irregular, between \$19 and \$20. The demand is moderate.

Lead.—A very fair demand exists, at an unchanged price of \$3.75 to \$3.85.

Lime.—Retail price in city 35c. per 100 lbs. f.o.b., car; in large lots at kilns outside city 22c. per 100 lbs. f.o.b. car without freight. Demand is moderate.

Lumber.—An unusually brisk demand has characterized the month, and prices are fully maintained. Pine is good value at \$32 to \$35 per M. for dressing; common stock boards, \$28 to \$33; cull stocks, \$20; cull sidings, \$17.50. Southern pine dimension timber from \$30 to \$45, according to size and grade; finished Southern pine, according to thickness and width, \$30 to \$40; hemlock is in demand and held somewhat higher, we quote \$17.50 to \$18; spruce flooring in car lots, \$22 to \$24; shingles, British Columbia, are steady, we quote \$3.10; lath, No. 1, \$4.60; white pine, 48-inch, No. 2, \$3.75; for 32-inch, \$1.70 is asked.

Nails.—Wire, \$2.35 base cut, \$2.60; spikes, \$2.85 per keg of 100 lbs.

Pitch and Tar.—Pitch, unchanged at 70c. per 100 lbs. Coal tar, \$3.50 per barrel. Demand moderate.

Plaster of Paris.—Calcined, New Brunswick, hammer brand, car lots, \$1.95; retail, \$2.15 per barrel of 300 lbs.

Putty.—In bladders, strictly pure, per 100 lbs., \$2.25; in barrel lots, \$2.10. Plasterer's, \$2.15 per barrel of three bushels.

Ready Roofing.—An active demand; prices are as per catalogue

Roofing Slate.—Most of the slate used in Canada comes now from Pennsylvania or Maine, the Canadian supply being slender and mostly from the Rockland quarries of the Eastern Townships in Quebec. There is a great variety of sizes and qualities, so that it is difficult to indicate prices. But No. 1 Bangor slate 10 x 16 may be quoted at \$7 per square of 100 square feet, f.o.b., cars, Toronto; seconds, 50c. less. Mottled, \$7.25; green, \$7, with a prospect of advance. Dealers are fairly busy.

Rope.—Sisal, 9½c. per lb.; pure Manila, 10½c. per lb., Base.

Sand.—Sharp, for cement or brick work, 90c. per ton f.o.b., cars, Toronto siding.

Sewer Pipe.—

	4-in.	6-in.	9-in.	10-in.	12-in.	24-in.
Straight pipe per foot \$0.20	\$0.30	\$0.65	\$0.75	\$1.00	\$3.25
Single junction, 1 or 2 ft. long90	1.35	2.70	3.40	4.50	14.65