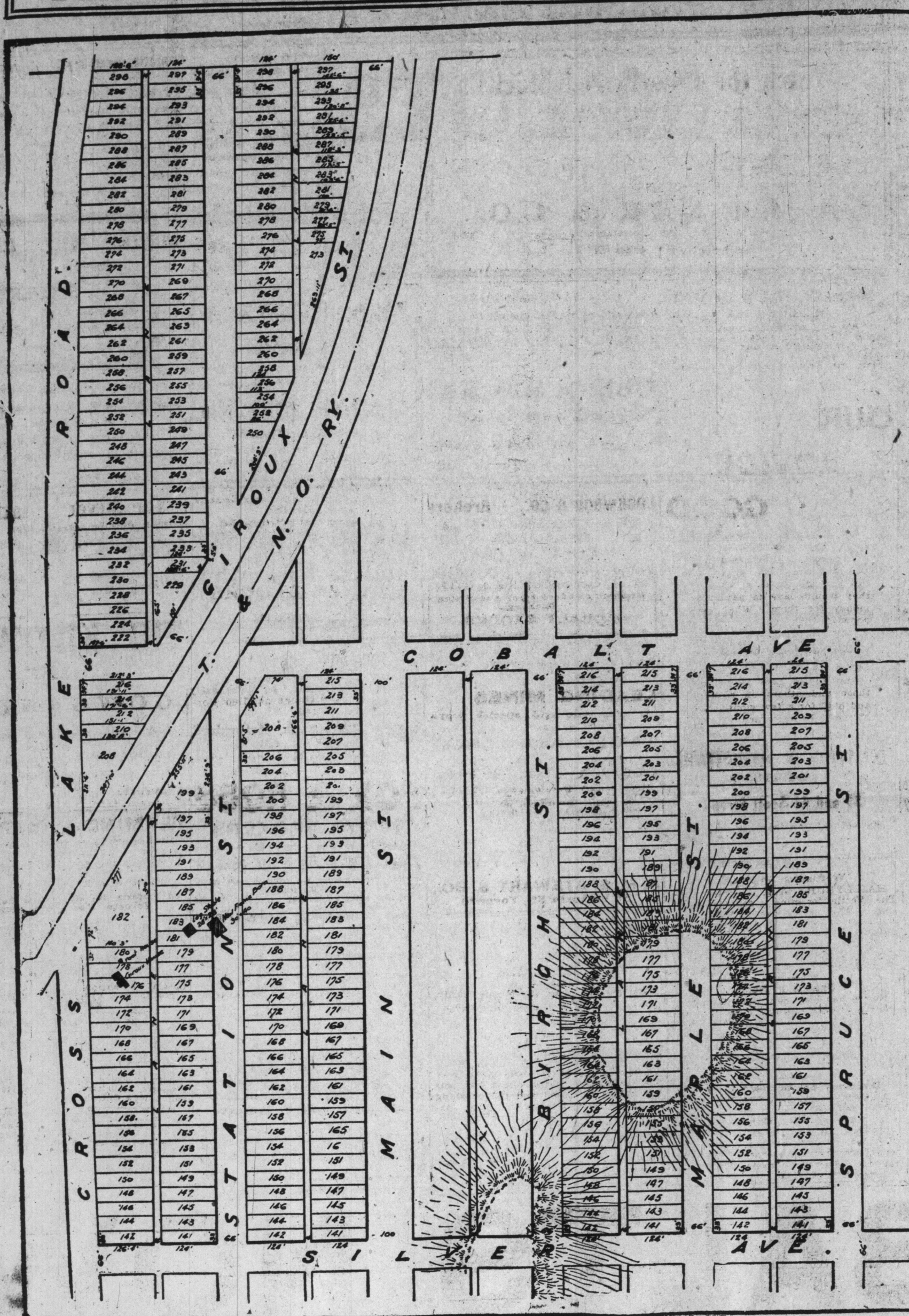


Port Cobalt Lots

THE GREATEST BARGAIN TO-DAY IN TOWN LOTS THAT WILL TREBLE IN VALUE



PORT COBALT is the coming centre of the Northern Silver Fields, and the centre of the electric road connecting Haileybury, Cobalt, Port Cobalt with the silver mines of Coleman, South Lorrain, North Bucke, and the navigation of the Ottawa and points in Quebec.

Port Cobalt will be the centre by water and rail of the great agricultural clay belt to the north of it. The gold mines of Larder Lake and vicinity will be reached from this point.

You're not asleep, are you? Well, here is your chance.

Prices, and only one price:

Lots west of Giroux street (also west and north of the Temiskaming and Northern Ontario Railway) \$100 each; \$25 down, balance on delivery of deed within 10 days.

Lots on west side of Main street, \$150 each; \$25 down, balance on delivery of deed within 10 days. The trolley line is already graded on Main street past these lots.

Lots on Station street \$125 each; \$25 down, balance on delivery of deed within 10 days.

Lots on Cross Lake Road \$150 each; \$25 down, balance on delivery of deed within 10 days.

All the lots in the two full blocks between Birch street and Spruce street \$80 each; \$20 down, balance on delivery of deed within 10 days.

Buildings are going up in every direction in Port Cobalt. Buyers welcome to visit and see the town for themselves.

You will not be able to get these lots for double the money in 10 days.

First come, first served.

Greater Cobalt (Haileybury, Port Cobalt and Cobalt) will be a great city on Lake Temiskaming (Ottawa River) and the wealthiest and most productive city of its size in the world. Port Cobalt is to be the hub of the Cobalt mines, as it will have trolleys to all the districts.

The Queen City of Silverland on the Beautiful Lake Temiskaming, the centre of the Silver camp of the world
Lots are going rapidly. Wire, write or phone. Send money with application

ENGLISH, "The Land Man"

CORNER OF ADELAIDE AND VICTORIA STREETS

TORONTO

TELEPHONE MAIN 3428 and MAIN 3429