

Phoxopteris Tr. *Anchylopera* Wal. & Riley. *comptana* Frol. *fragariae* W. & R.
Phoxopteris comptana Frol. The Strawberry leaf roller. Fig. 25.

Expanse of wings about half an inch.

Colors: Front wings reddish brown, marked with black and white; hind wings dusky. An introduced species. (See Third Annual Report.)

Aspidisea Clem. *splendoriferella* Clem. *pruniella* Clem. *sacotella* Pack. *Aspidisea splendoriferella* Clem. An apple leaf miner. Fig. 26.

Colors: Front wings leaden gray, with a metallic lustre, with golden and silver spots and streaks; Hind legs gray with yellowish brown fringe.

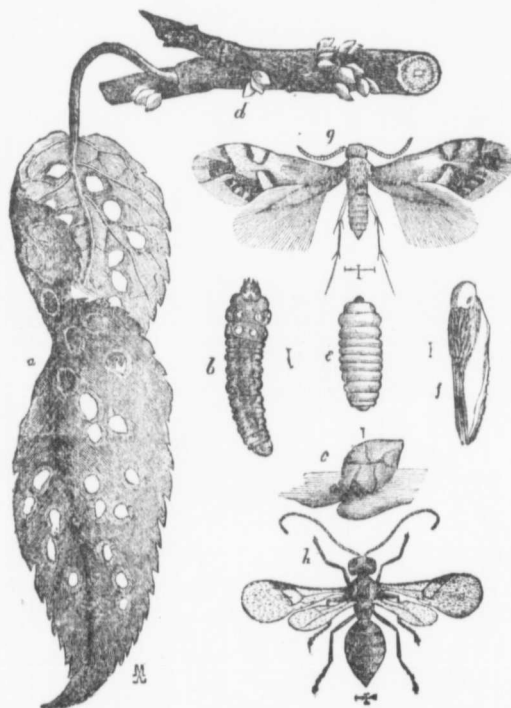


Fig. 26.

a shows the work of the minute larva in the leaf; the line at *b* gives its length; *d* illustrates the cocoons attached to the branch, and *h* is a parasite greatly enlarged. The cross lines below indicate the natural size.

Coleophora Zell. *malivorella* Riley. *multipulvella* Cham. *Coleophora malivorella* Riley. The Apple-tree case-bearer. Fig. 27.

Expanse of wings about half an inch.

Colors: Wings brown, dotted with white; thorax and abdomen white, dotted with brown. The parent moth deposits her eggs in July, the larva feeding on the underside of the leaf during August and September. On the approach of the cold weather they desert the leaves and fasten their cases to the twigs, as represented at (a) where they pass the winter. When the warm weather returns in spring they detach themselves and move about, feeding on the swelling buds, when they do the greatest injury; maturing about the beginning of July to commence another cycle.