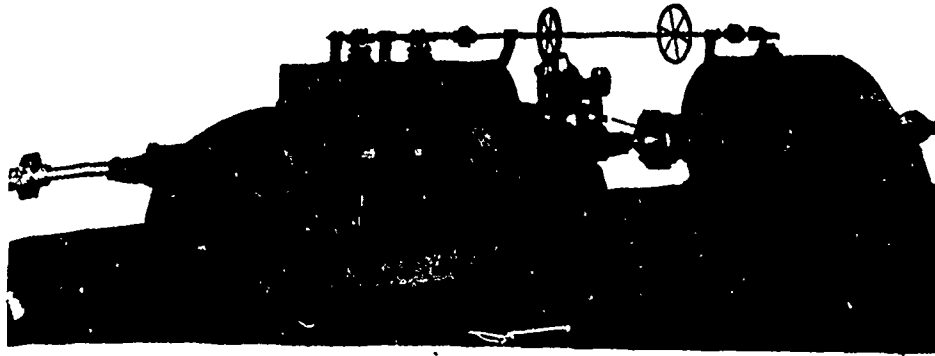


The McCormick Turbine © All Sizes Tested at Holyoke.....



©

Enormous Power and Higher Efficiency than is obtained from any other make.

Hundreds Driving Electrical Machinery.

Write for Catalogue.

©

This Engraving represents three 21 inch Turbines, operating under 6' head, in the Plant of Chas T. Westcott, Baltimore, Md

S. MORGAN SMITH CO. - YORK, PA.

The National Tube Works Company

The Largest Makers of All Sizes and Kinds of

Special Wrought Mild Steel and Best Wrought Iron Tubular Goods in the World.

Control the Manufacture of

Wrought Tubular Goods,

—Made of a High Class of Mild Steel from the Ore to the Finished Product—and Unqualifiedly Recommend NATIONAL STEEL PIPE for all uses as Better than any Iron Pipe made.

McKEESPORT, PA.

TENDERS WANTED

A Weekly Journal of advance information and public works.
The recognized medium for advertisements for Tenders.

CANADIAN CONTRACT RECORD
TORONTO.

To Central Station Managers

Have your Generator or Transformer Plants remodelled and put on a paying basis. You do not know how much coal is being wasted in inefficient machinery, or poorly arranged distribution systems, until you investigate. Write to the undersigned for information that you will never get from manufacturing companies, as to improved methods and fuel-saving devices.

GEO. WHITE-FRASER

Mem. Am. Inst. Elec. Eng.

Consulting Electrical Engineer.

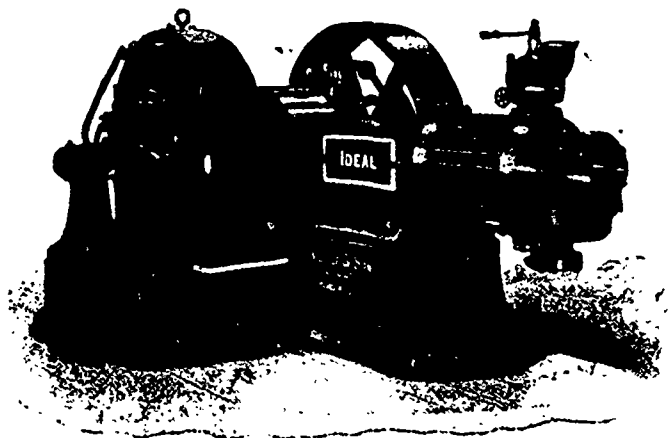
18 Imperial Loan Building,
TORONTO

THE Goldie & McCulloch Co.

MANUFACTURERS OF

LIMITED

**IMPROVED
STEAM
ENGINES
AND
BOILERS**



Flouring Mills, And the Erection of Same in the Most Complete Style of Modern Improvement.

Wool Machinery,
Wood-Working Machinery
Saw Mill, Shingle and Stave Machinery,
Fire and Burglar-Proof Safes and Vault Doors.

THE "IDEAL" HIGH SPEED ENGINE, DIRECT-CONNECTED.

SPECIAL ATTENTION called to the "WHEELOCK" IMPROVED STEAM ENGINE, also the "IDEAL" HIGH SPEED ENGINE, cut of which appears above, as being Unequaled for Simplicity, Efficiency and Economy in Working, and Especially Adapted for Electric Lighting, Street Railways, Etc.

† GALT, ONT.