

HIGHEST PRICE FOR CREAM

THE T. EATON CO. LIMITED is now paying 31c per lb. for Butter Fat. We buy cream, sweet or sour, of good flavor. We furnish the cans and pay the express charges within a radius of 250 miles of Toronto.

We test and weigh each can on arrival, and send you a statement for same.

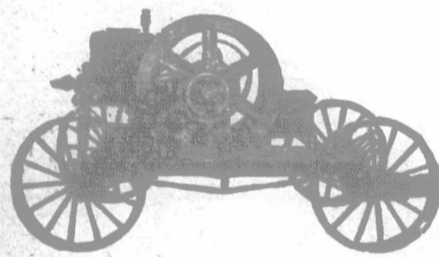
We pay all patrons once a week, and the price is increased as the price of butter advances.

Drop us a card, and we shall be pleased to furnish you with any further information you may require.

THE T. EATON CO. LIMITED
TORONTO - CANADA

FOR YOUR FARM, YOUR HOME, YOUR FACTORY FOR EVERY POWER PURPOSE

A Gilson "Goes-Like-Sixty" Engine with New Features and Latest Improvements.



**MORE VALUE
MORE POWER
MORE SERVICE
MORE SATISFACTION**

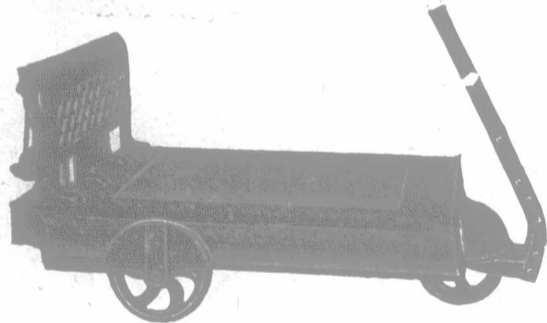
Does satisfaction mean anything to you? Does money saved in fuel, in time, in repairs and expense bills appeal to you? Get Gilson Facts, and find out how the Gilson 60-SPEED engine does the greatest variety of work—how it gives the maximum satisfaction—gives money in equipment, and yields 100% service at lowest cost. Every engine covered by a cast-iron guarantee.

The New Gilson 5, 6 and 8 h.-p. engines, equipped with our new friction clutch pulley, with five removable rims, each of a different diameter. Change to the proper speed for any job in five minutes. A NEW and EXCLUSIVE GILSON FEATURE.

We also make 60-SPEED engines in 1 1/4 and 3 h.-p. sizes. These are mounted on truck, with line shaft and five interchangeable pulleys, and pump-jack. Drop us a card to-day, and we will send you full descriptive literature. We are making special prices to the first purchaser of one of these engines in every locality. Write NOW. Agents wanted.

GILSON MFG. CO., LTD., 120 York St., GUELPH, ONT.

WAGON AND STOCK SCALE, a Money-saver to You, Mr. Farmer



So often you lose money because you are not quite sure of the weight of the article that is changing hands, and by just putting it on the scales your eyes are opened, and you are in a position to judge very accurately as to what this or that particular thing is worth.

Write to-day for our illustrated catalogue, telling you about the Three-wheeled Wagon and Stock Scale. Capacity, 2,000 lbs. All material and workmanship first-class and guaranteed.

Address:
The Aylmer Pump & Scale Co., Limited
AYLMER, ONTARIO

GOVERNMENT EXPERT

Chooses SHARPLES Tubular Cream Separators for His Three Farms



Like other shrewd farmers, Mr. Anson Groh, widely known agricultural lecturer employed by the Government, knows the money to be made in dairying. He has succeeded because he knows profit is of far greater importance than first cost. Mr. Groh is seen sitting in this picture, with his family and assistants, before his country home. Like others making most money from dairying, Mr. Groh selected the Tubular in preference to all others because the Dairy Tubular contains no disks or other contraptions, has twice the skimming force of other separators, skims faster and twice as clean, and pays a profit no other can pay. Mr. Groh says:

"Preston, Ontario, May 26, 1912.—Some years ago we selected the Sharples Tubular. After a few years' use we found it necessary to get another separator for another farm and selected a No. 6. After several years' service of these two machines, we would not think of introducing anything else on our third farm, recently purchased. ANSON GROH."

Now you understand why owners of other separators are discarding their machines by carloads for Tubulars. Follow the example of Mr. Groh and the many others who have succeeded. Buy a Tubular for the sake of double skimming force, easy cleaning, and all the profits.

Get quick attention by asking for Catalog 193
The Sharples Separator Co.
Toronto, Ont. Winnipeg, Man.

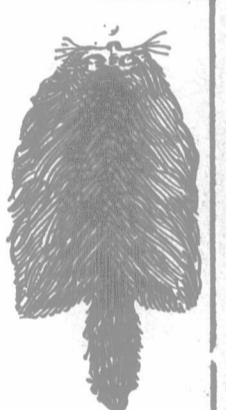
RAW FURS



Are you a trapper? Are you a dealer? Are you seeking a reliable firm to ship to? Many thousands of shippers say we give best returns, good reasons—we pay as we quote, give a square grade and send your money as quick as the return mail can bring it to you. We post you reliably.

No Commissions. No Express Charges.
Write at once for price list, tags, envelopes, invoices, etc.

BENJAMIN DORMAN, Inc.
RAW FURS, GINSENG, GOLDEN SEAL
147 West 24th Street, New York. (Mention this paper.)
References: Greenwich Bank, N. Y. East River National Bank, N. Y.



The CENTRAL Nurseries

at the front with their usual supply of best grown stock for their customers. Priced catalog soon ready. With best wishes for a prosperous New Year, we are at your Service.

—Faithfully, A. G. HULL & SON, ST. CATHARINES, ONT.



SYNOPSIS OF DOMINION LAND REGULATIONS

ANY PERSON who is the sole head of a family, or any male over 18 years old, may homestead a quarter section of available Dominion land in Manitoba, Saskatchewan or Alberta. The applicant must appear in person at the Dominion Lands Agency or Sub-agency of the district. Entry by proxy may be made at any agency, on certain conditions, by father, mother, son, daughter, brother or sister of the intending homesteader.

Duties—Six months' residence upon and cultivation of the land in each of three years. A homesteader may live within nine miles of his homestead on a farm of at least 80 acres solely owned and occupied by him, or by his father, mother, son, daughter, brother or sister.

In certain districts a homesteader in good standing may pre-empt a quarter-section alongside his homestead. Price \$3.00 per acre.

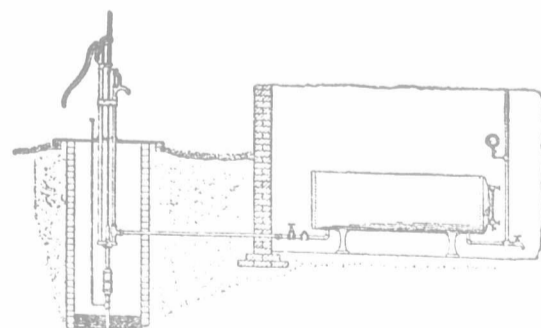
Duties—Must reside upon a homestead or pre-emption six months in each of six years from date of homestead entry (including the time required to carry homestead patent) and cultivate 50 acres extra.

A homesteader who has exhausted his homestead right and cannot obtain a pre-emption may enter for a purchased homestead in certain districts. Price \$3.00 per acre. Duties—must reside six months in each of three years, cultivate fifty acres and erect a house worth \$200.00.

W. W. CORY,
Deputy of the Minister of the Interior.

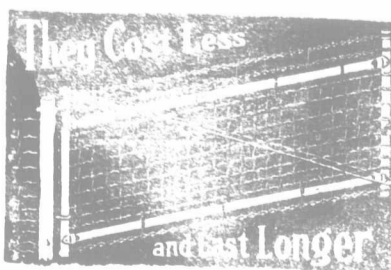
N. B.—Unauthorized publication of this advertisement will not be paid for.

Heller-Aller Pneumatic Water Supply System



THE HELLER-ALLER CO., WINDSOR, ONTARIO

solves the problem and makes it possible to have running water anywhere in the house, stable or yard, for all domestic purposes, and for fire protection. The cost is so low that almost every country resident can afford to install it. Operated by windmill, electric motor, gasoline engine or by hand power. Write for information.



"Clay" Gates

STRONGEST and most durable gates made. 50,000 lbs. weight. 12 ft. high. 10 ft. wide. 12 ft. long. Made in Windsor, Ontario. Send for literature.

THE CANADIAN GATE CO. LTD.
WINDSOR, ONTARIO

GRAND TRUNK RAILWAY SYSTEM

CALIFORNIA

MEXICO

FLORIDA

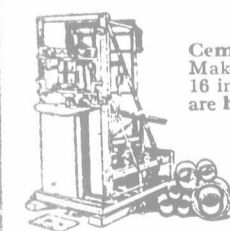
AND

THE SUNNY SOUTH

The Grand Trunk Railway is the most direct route from all points East through Canada via Chicago, Detroit or Buffalo.

Only Double Track Route

Round trip tourist tickets, giving choice of all the best routes, together with full information, may be obtained from any Grand Trunk Agent.



"LONDON"

Cement Drain Tile Machine. Makes all sizes of tile from 3 to 16 inches. Cement Drain Tile are here to stay. Large profits in the business. If interested send for catalogue. London Concrete Machinery Co., Dept. B, London, Ont. Largest manufacturers of Concrete Machinery in Canada.