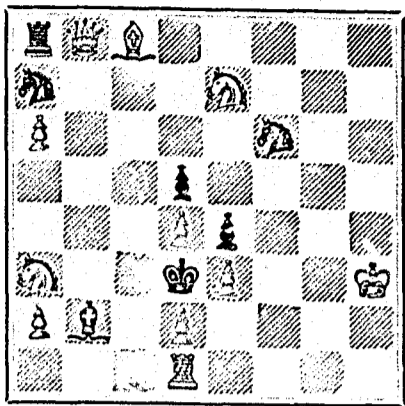


PROBLEM No. 239. By J. G. FISCH.



WHITE. White to play and mate in three moves.

GAME 3838. CANADIAN CHESS CORRESPONDENCE TOURNEY.

Game played between Mr. J. Henderson, of Montreal, and Mr. M. J. Murphy, of Quebec.

- WHITE.—(Mr. Henderson.) 1. P to K 4. 2. Kt to K B 3. 3. B to Q B 4. 4. Kt to K Kt 5. 5. P takes P. 6. B to Q Kt 5 (ch). 7. Q to K 2. 8. B takes B (ch). 9. P to Q B 4. 10. Kt to Q B 3. 11. P takes P. 12. P to Q 3. 13. K Kt to K 4. 14. P takes Kt. 15. Castles. 16. Q to Q 3. 17. K to R sq. 18. P to K B 3. 19. Kt to K 2 (b). 20. P to Q Kt 3. 21. K R takes B. 22. P to Q B 4. 23. P to K B 3. 24. K to R 2. 25. R to B 3. 26. Q takes R. 27. R to Q B sq. 28. Q to Q 3. 29. R takes R. 30. Q to B 3. 31. Kt takes Q. 32. K to Kt 3. 33. P to B 4. 34. P takes B P. 35. K takes P. 36. K to K 4. 37. Kt to Q sq (2). 38. Kt to K 3. 39. K to Q 4. 40. Kt takes Kt. 41. P to K Kt 4 (ch) (f). 42. P takes P (ch). 43. K to B 4. 44. K to B 5.

NOTES.

- (a) P to Q B 3 here is the move approved by the authorities. (b) The right move. (c) This was forced, as White evidently intended to double his Rooks. (d) His retreat of the Q does not improve Black's game. (e) A very important move at this point. (f) This move settles the matter.

GAME 3847H.

INTERNATIONAL TOURNEY.

Game played between Mr. S. H. Gossip, of Colchester, Eng., and Mrs. J. W. Gilbert, of Hartford, Conn., U.S.

- WHITE.—(Mr. Gossip.) 1. P to K 4. 2. Kt to K B 3. 3. Kt takes P. 4. Kt to K B 3. 5. P to Q 4. 6. B to Q 3. 7. Castles. 8. P to B 4. 9. Q to Kt 3. 10. B takes Kt. 11. P to Q 5. 12. P takes Kt. 13. R to Q sq. 14. Kt to Q B 3. 15. P takes P. 16. Q to Q R 4. 17. Q to Q Kt 3. 18. K to R sq. 19. K to Kt sq. 20. K to B sq. 21. Kt to Q 5. 22. K to K 2. 23. K to Q 2. 24. K to B 3. 25. K to B 2. 26. K takes B. 27. B to Q 2. 28. K to Q B 2. 29. Q to Q 3. 30. K takes Q. 31. R to K Kt sq. 32. B to K R 6. 33. B to K 3. 34. R to Q Kt. Resigns.

SOLUTION.

Solution of Problem No. 37.

- WHITE. 1. Kt to K 2. 2. Mates acc.

Solution of Problem for Young Players No. 235.

- WHITE. 1. R to K R 8. 2. Kt to Q B 6 (ch). 3. Kt mates.

PROBLEM FOR YOUNG PLAYERS, No. 235.

- WHITE. K at K Kt 5. Q at K Kt sq. R at Q 7. B at Q R 3. Pawn at Q B 4.



RIVER ST. MAURICE.

NOTICE TO CONTRACTORS.

SEALED TENDERS addressed to the undersigned, and endorsed "Tender for Repairs of Grandes Piles Dam," will be received at this office until the THIRTEENTH day of NEXT SEPTEMBER, inclusive.

The plans and specification of the work can be seen at this Office and at the Superintendent's Office at Three Rivers, on and after the twenty fifth instant. Printed forms of tender can also be obtained together with printed copies of the specification in English and French at these places and at the residence of Arthur Rousseau, Slide-Master at St. Boniface de Hawawegau, by parties tendering, only.

Ten per cent. will be retained of the monthly progress estimates until the completion of the work. To each tender must be attached the actual signatures of two responsible and solvent persons, residents of the Dominion of Canada, willing to become sureties for the due performance of the work embraced in the contract.

The Department does not, however, bind itself to accept the lowest or any tender.

By order, F. BRAUN, Secretary.

Department of Public Works, Ottawa, 22nd August, 1879.

The Scientific Canadian

MECHANICS' MAGAZINE, AND PATENT OFFICE RECORD, A MONTHLY JOURNAL.

Devoted to the advancement and diffusion of Practical Science, and the Education of Mechanics.

THE ONLY SCIENTIFIC AND MECHANICAL PAPER PUBLISHED IN THE DOMINION.

THE BURLAND-DESBARATS LITH. CO.

OFFICES OF PUBLICATION: 5 and 7 Bleury Street, Montreal.

G. B. BURLAND, General Manager.

F. N. BOXER, ARCHITECT & CIVIL ENGINEER, Editor.

TERMS:

- One copy, one year, including postage... \$2.00. One copy, six months, including postage... 1.10. Subscriptions to be paid in ADVANCE.

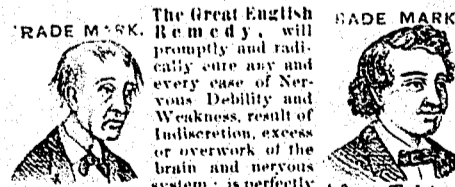
The following are our advertising rates:—For one monthly insertion, 10 cts. per line; for three months, 25 cts. per line; for six months, 45 cts. per line; for one year, 75 cts. per line; one page of illustration, including one-column description, \$30; half-page of illustration, including half-column description, \$20; quarter page of illustration, including quarter column description, \$10. 10 per cent. off on cash payments.

INVENTIONS AND MACHINERY, &c., or other matter of an original, useful, and instructive character, and suitable for subject matter in the columns of the MAGAZINE, and not as an advertisement, will be illustrated at very reduced rates.

REMITTING MONEY.—All remittances of money should be in the form of postal-orders. When these are not available, send money by registered letters, checks or drafts, payable to our order. We can only undertake to become responsible for money when sent in either of the above ways.

This journal is the only Scientific and Mechanical Monthly published in Canada, and its value as an advertising medium for all matter connected with our Manufactories, Foundries, and Machine Shops, and particularly to Inventors, is therefore apparent.

GRAY'S SPECIFIC MEDICINE.

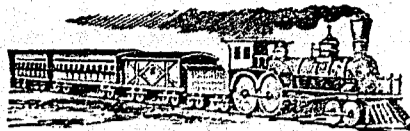


Before Taking. After Taking. The Great English Remedy will promptly and radically cure any and every case of Nervous Debility and Weakness, result of Indiscretion, excess or overwork of the brain and nervous system; is perfectly harmless, acts like magic, and has been extensively used for over thirty years with great success.

Full particulars in our pamphlet, which we desire to send free by mail to every one. The Specific Medicine is sold by all druggists at \$1 per package, or six packages for \$5, or will be sent free on receipt of the money by addressing

THE GRAY MEDICINE CO., TORONTO, ONT.

Sold in Montreal by all Wholesale and Retail Druggists, and every where in Canada and United States. N.B.—The demands of our business have necessitated our removing to TORONTO, to which place please address all future communications.



INTERCOLONIAL RAILWAY. SUMMER ARRANGEMENT, Commencing 14th July, 1879.

THROUGH EXPRESS PASSENGER TRAINS run DAILY (except Sundays) as follows:—

Table with columns for train names and times. Includes: Leave Point Levi (7:30 A.M.), River du Loup (1:15 P.M.), Arrive Trois Pistoles (Dinner) (2:25), Rimouski (3:44), Campbellton (Supper) (8:05), Dalhousie (8:22), Bathurst (10:12), Newcastle (11:40), Moncton (2:00 A.M.), St. John (6:00), Halifax (10:35).

These Trains connect at Point Levi with the Grand Trunk Trains leaving Montreal at 9:00 o'clock p.m., and at Campbellton with the Steamer City of St. John, sailing Wednesday and Saturday mornings for Gaspe, Percé, Paspébiac, &c.

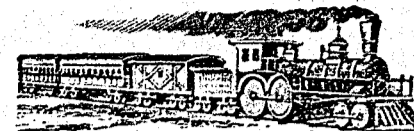
The trains to Halifax and St. John run through to their destination on Sunday.

The Pullman Car leaving Montreal on Monday, Wednesday and Friday runs through to Halifax, and that leaving on Tuesday and Thursday, to St. John.

SUMMER EXCURSION TICKETS may now be obtained via rail and steamer to the unrivalled Sea Bathing, Boating and Fishing resorts on the Lower St. Lawrence, Metapedia, Restigouche, Bay Chaleur, Gaspe, Prince Edward Island and the Maritime Provinces.

For information in regard to passenger fares, tickets, rates of freight, train arrangements, &c., apply to G. W. ROBINSON, Agent, 120 St. Francois Xavier Street, (Old Post Office Building.) Montreal.

D. POTTINGER, Chief Superintendent.



Q. M. O. & O. RAILWAY. Eastern Division.

COMMENCING TUESDAY, FEBRUARY 11th, Trains will be run in this Division as follows:—

Table with columns for train names, times, and directions. Includes: Leave Hochelaga (4:00 p.m.), Arrive Three Rivers (7:45 p.m.), Leave Three Rivers (8:00 p.m.), Arrive Quebec (10:46 p.m.).

Trains leave Mile-End Station ten minutes later. Tickets for sale at offices of Starnes, Leve & Alden, Agents, 202 St. James Street, and 152 Notre Dame Street, and at Hochelaga and Mile-End Stations.

J. T. PRINCE, Gen'l Pass. Agent. Feby. 7th, 1879.

LANGUAGE AND FINE ARTS.

Lessons of the French language, Drawing and Painting (in oil or water colors), with theoretical and practical perspective, by a first-class Professor. Address "B." office of the Canadian Illustrated News.

THE COOK'S FRIEND BAKING POWDER

Has become a HOUSEHOLD WORD in the land, and is a HOUSEHOLD NECESSITY in every family where Economy and Health are studied. It is used for raising all kinds of Bread, Rolls, Paucakes, Girdle Cakes, &c., &c., and a small quantity used in Pie Crust, Puddings, or other Pastry, will save half the usual shortening, and make the food more digestible.



SAVE TIME, IT SAVES TEMPER, IT SAVES MONEY. For sale by storekeepers throughout the Dominion, and wholesale by the manufacturer. W. D. McLAREN, UNION MILLS, 75 College Street.

\$77 a Month and expenses guaranteed to Agents. Outfit free. SHAW & CO., AUGUSTA, MAINE.

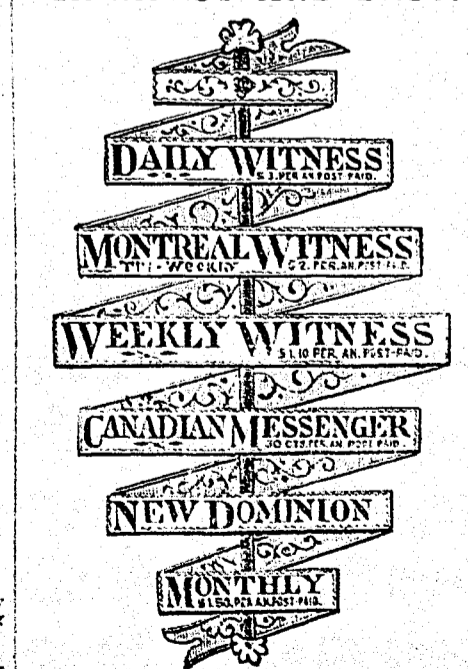
ROBERT MILLER, Publisher, Book-Binder, Manufacturing and WHOLESALE STATIONER.

IMPORTER OF Wall Papers, Window Shades and SCHOOL BOOKS, 397, NOTRE DAME STREET, MONTREAL.

60 CHROMO. MOTTO, Gift-Edge & Lilly cards, with name, 10c. Globe Print. Co., Northford, Ct.

25 FANCY CARDS with Name 10c. Plain or Gold Agents' Outfit 10c. 150 Styles. Hull & Co. Hudson, N. Y.

CHEAPEST AND BEST.



JOHN DOUGALL & SON, 218 and 220, St. James Street, Montreal. Electrotyping and Job Printing, Chromatic and plain.

THE Canadian Spectator,

A high-class Weekly Journal, EDITED BY THE Reverend A. J. BRAY.

SUBSCRIPTION: \$2.00 PER ANNUM. OFFICES: 102 St. James Street, Montreal, and 4 Toronto Street, Toronto.

THE MILTON LEAGUE.

"Give me the liberty to know, to think, to believe, and to utter freely, according to conscience, above all liberties.—Milton."

PUBLICATIONS:

- BRAY, REV. ALFRED J. The Churches of Christendom, cloth... \$1.60. BROWN, REV. J. BALDWIN. The Doctrine of Annihilation in the Light of the Gospel of Love... 20. DALE, REV. R. W. Protestantism: Its Ultimate Principle... 60. The Ten Commandments... 60. DAWSON, GEO. M.A. Prayers and a Discourse on Prayer... 50. McLEOD, NORMAN, D.D. Scotch Pebbles... 15. TIPPLE, Rev. S. A. Echoes of Spoken Words... 50.

"Here is a new wave of literature, and of the deep and wide sea of religious thought, but sparkling and bright and gratefully refreshing."—Literary World.

IMPORTANT NOTICE.

THE BURLAND-DESBARATS Lithographic Co. 5 & 7 BLEURY ST.,

Begs to inform the BANKERS, MERCHANTS and BUSINESS MEN of the Dominion, that their large establishment is now in full operation, and that they are prepared to do all kinds of

ENGRAVING. ELECTROTYPING. STEREO TYING. LITHOGRAPHING and TYPE PRINTING.

Photo-Electrotyping & Wood Engraving

IN THE BEST STYLE, AND AT LOW PRICES. Special attention given to the reproduction by

Photo-Lithography OF MAPS, PLANS, PICTURES or BOOKS OF ANY KIND.

From the facilities at their command, and the completeness of their establishment, the Company feel confident of giving satisfaction to all who entrust them with their orders. G. B. BURLAND.

TO LET.

In those central premises forming the corner of Bleury and Craig Streets, and in the adjacent house on Craig Street—OFFICES, double and single. FLATS, admirably adapted for light manufacturing business, with or without steam power. Rent moderate.

Apply to G. B. BURLAND, No. 7 Bleury Street