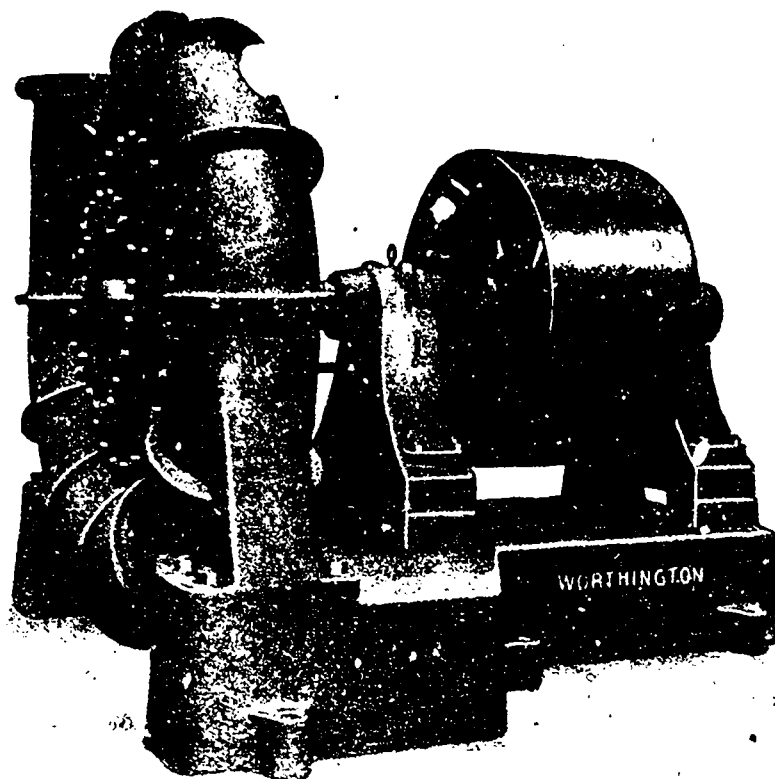


PUMPS! PUMPS!

Of All Capacities and For All Services



WORTHINGTON

20 INCH VOLUTE CENTRIFUGAL PUMP FOR HANDLING "STUFF"
AT THE LAURENTIDE PAPER CO., GRAND MERE, QUE. CAPACITY
11,000 GALLONS PER MINUTE. BULLETIN 104 DESCRIBING VOLUTE
PUMPS WILL BE SENT ON APPLICATION TO OUR NEAREST SALES
OFFICE.

**THE JOHN McDOUGALL
CALEDONIAN IRON WORKS CO., Limited**

WORKS: MONTREAL

SALES OFFICES: NEW GLASGOW, MONTREAL, TORONTO, COBALT,
WINNIPEG, CALGARY, VANCOUVER

When writing to Advertisers kindly mention THE CANADIAN MANUFACTURER.